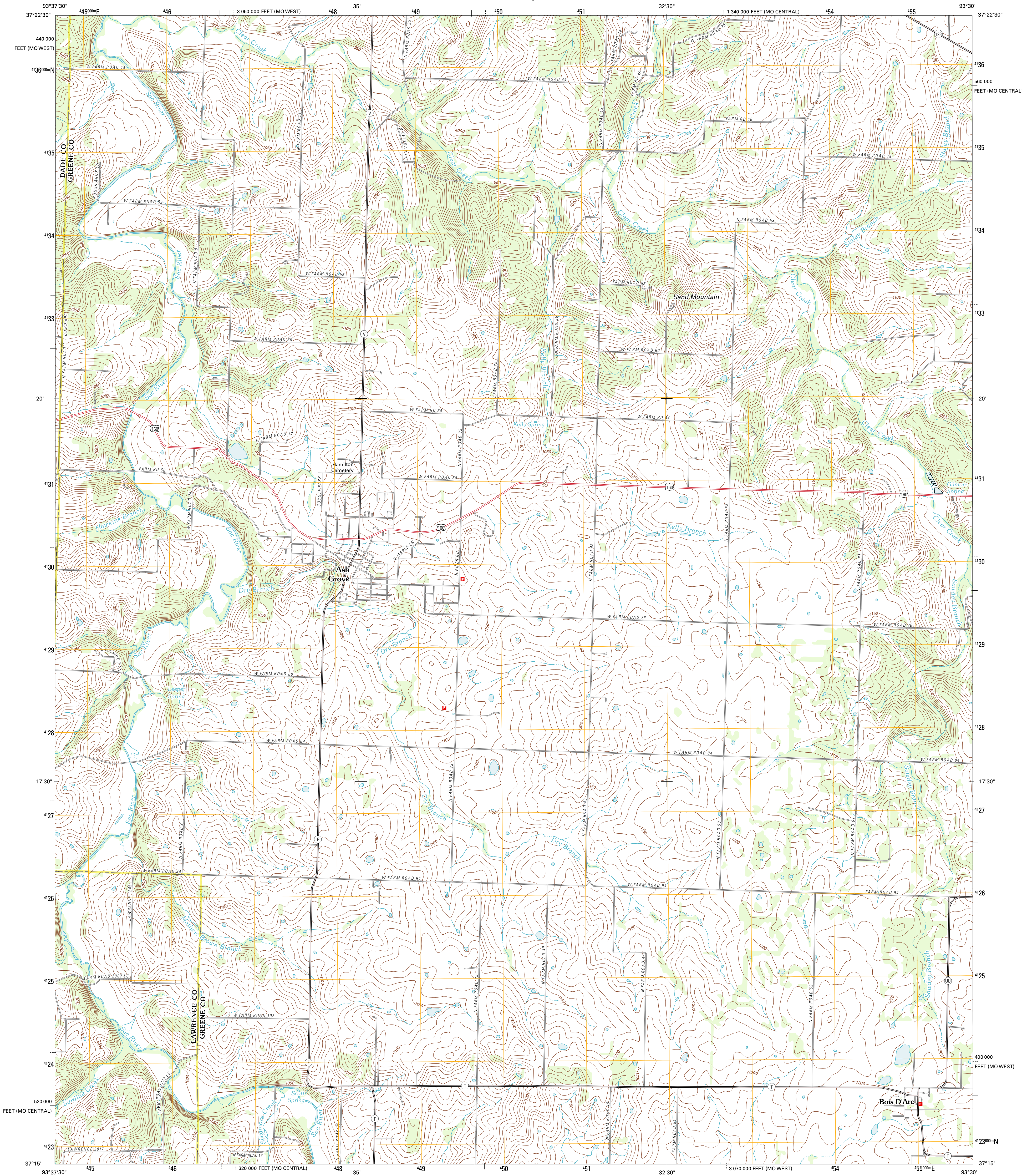




U.S. DEPARTMENT OF THE INTERIOR
U. S. GEOLOGICAL SURVEY

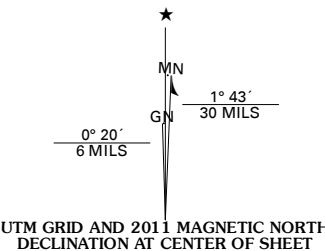


ASH GROVE QUADRANGLE
MISSOURI
7.5-MINUTE SERIES

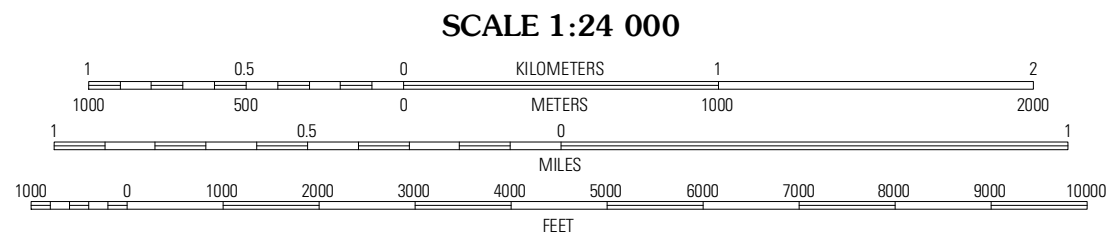


Produced by the United States Geological Survey
North American Datum of 1983 (NAD83)
World Geodetic System of 1984 (WGS84). Projection and
1 000-meter grid: Universal Transverse Mercator, Zone 15S
10 000-foot ticks: Missouri Coordinate System of 1983
(central and west zones)

Imagery.....©2006-2011 TomTom
Roads.....©2006-2011 TomTom
Names.....GNIS, 2011
Hydrography.....National Hydrography Dataset, 2010
Contours.....National Elevation Dataset, 2002
Boundaries.....Census, BWC, IBC, USGS, 1972 - 2010



U.S. National Grid
100,000-m Square ID
VB
Grid Zone Designation
15S



CONTOUR INTERVAL 10 FEET
NORTH AMERICAN VERTICAL DATUM OF 1988
This map was produced to conform with the
National Geospatial Program US Topo Product Standard, 2011.
A metadata file associated with this product is draft version 0.6.1



Dadeville	Walnut Grove	Morrisville
Everton	Ash Grove	Willard
Hallowell	Hallowell NE	Brookline

ADJOINING 7.5' QUADRANGLES

ROAD CLASSIFICATION		
Interstate Route	State Route	
US Route	Local Road	
Ramp	4WD	
Interstate Route	US Route	State Route

ASH GROVE, MO
2011