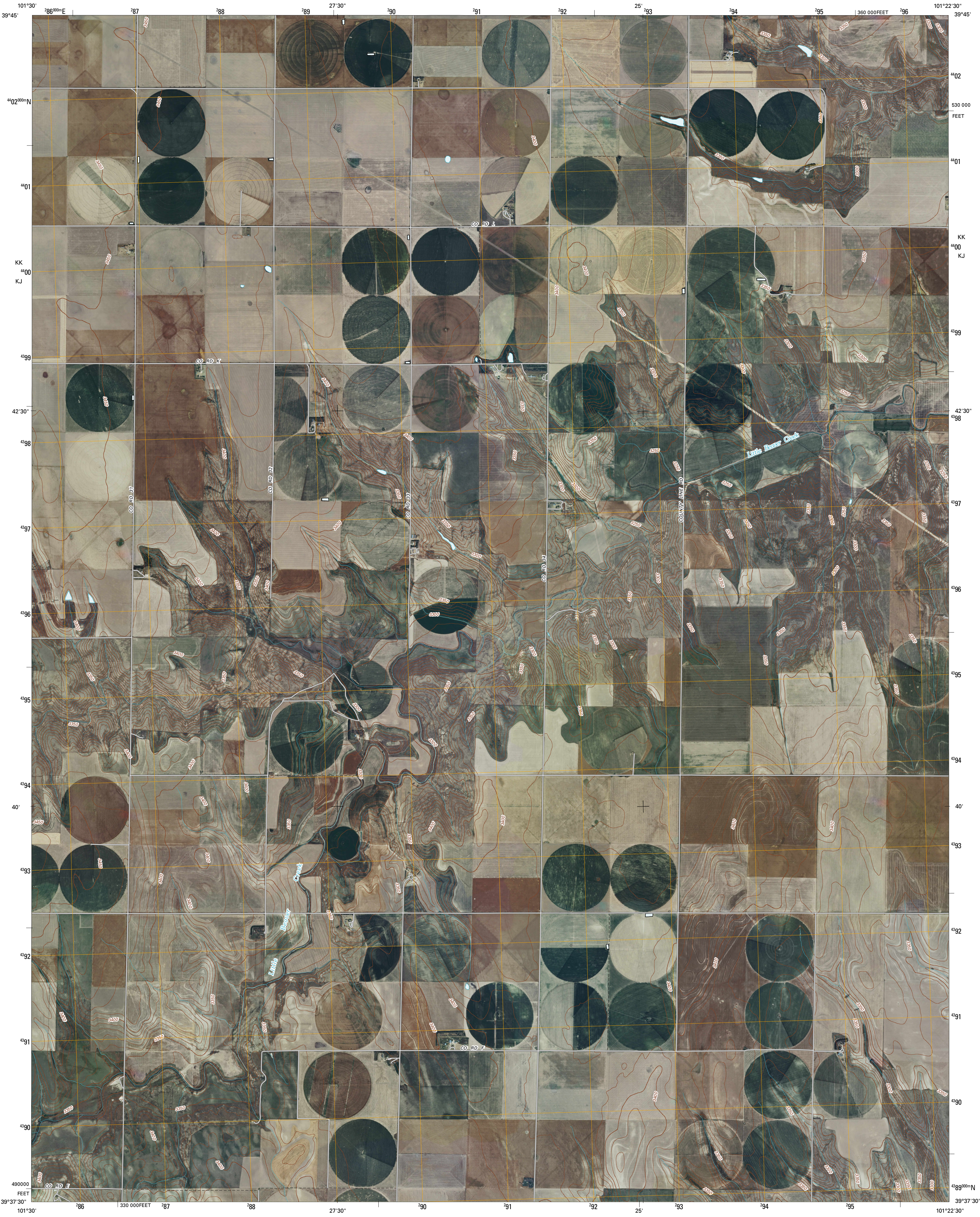




U.S. DEPARTMENT OF THE INTERIOR  
U. S. GEOLOGICAL SURVEY

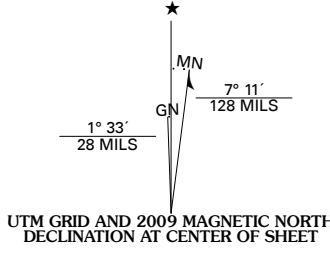


DEWEY RANCH NW QUADRANGLE  
KANSAS  
7.5-MINUTE SERIES

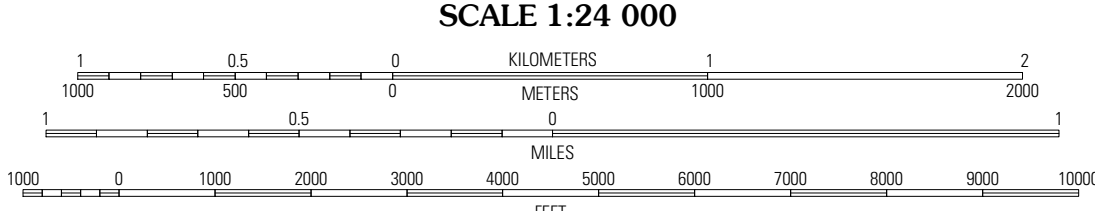


Produced by the United States Geological Survey  
North American Datum of 1983 (NAD83)  
World Geodetic System of 1984 (WGS84). Projection and  
1 000-meter grid: Universal Transverse Mercator, Zone 14S  
10 000-foot ticks: Kansas Coordinate System of 1983  
(north zone)

Imagery.....NAIP, July 2008  
Roads.....National Transportation Dataset, 2005  
Names.....GNIS, 2008  
Hydrography.....National Hydrography Dataset, 2008  
Contours.....National Elevation Dataset, 2006



U.S. National Grid
100,000-m Square ID
KK = ( )
KJ = ( )
Grid Zone Designation
14S



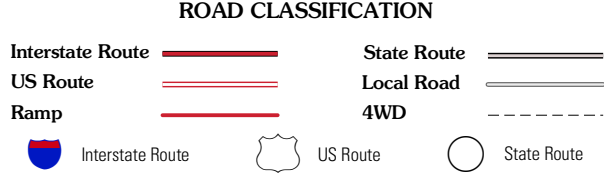
CONTOUR INTERVAL 10 FEET

This map was produced to conform with version 0.5.10 of the  
draft USGS Standards for 7.5-Minute Quadrangle Maps.  
A metadata file associated with this product is also draft version 0.5.10



QUADRANGLE LOCATION		
Bird City North	McDonald SW	McDonald
Bird City South	Dewey Ranch NW	Dewey Ranch
Bird City South SE	Dewey Ranch SW	Dewey Ranch SE

ADJOINING 7.5' QUADRANGLES



DEWEY RANCH NW, KS  
2009