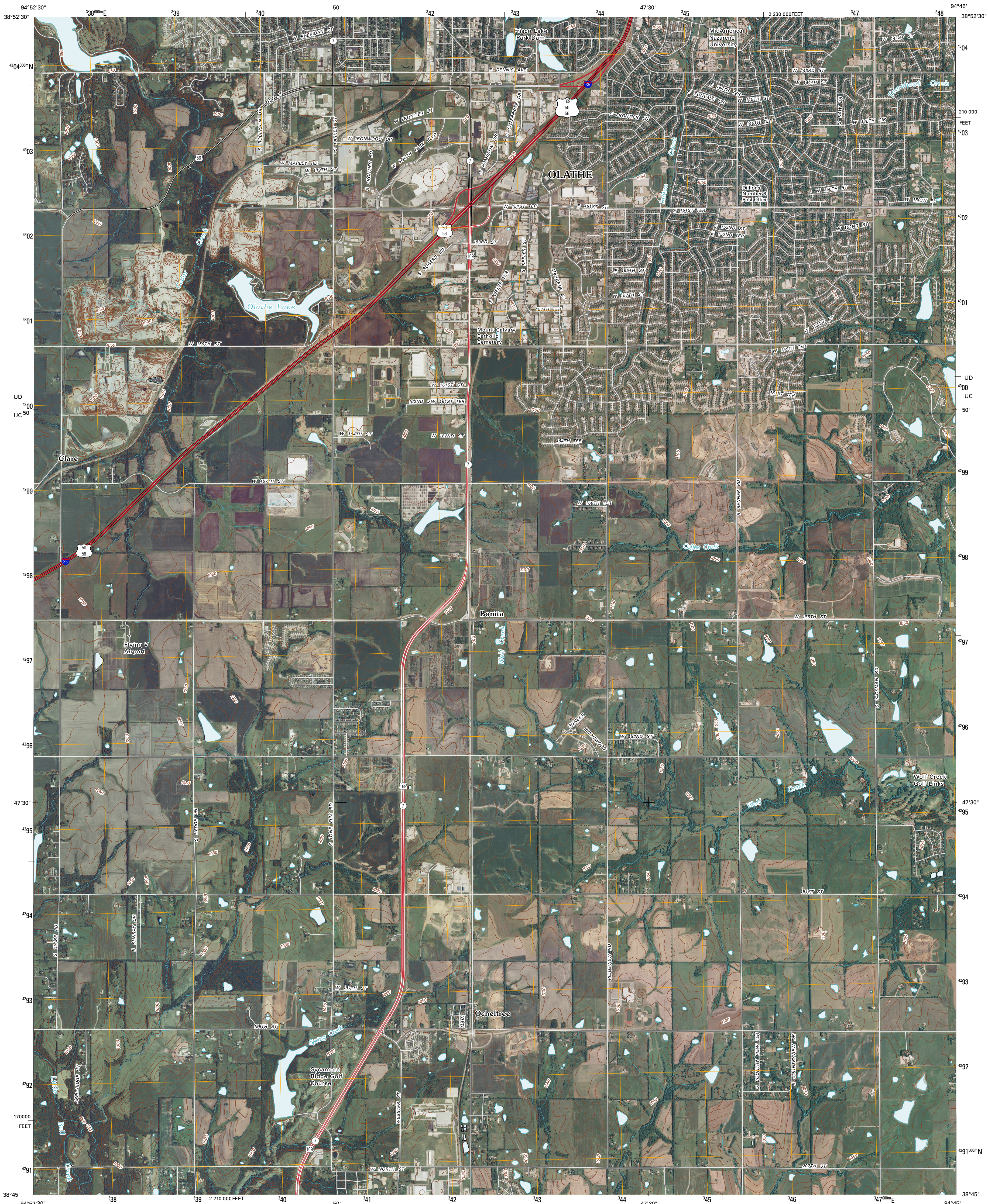




U.S. DEPARTMENT OF THE INTERIOR  
U. S. GEOLOGICAL SURVEY



OCHELTREE QUADRANGLE  
KANSAS  
7.5-MINUTE SERIES



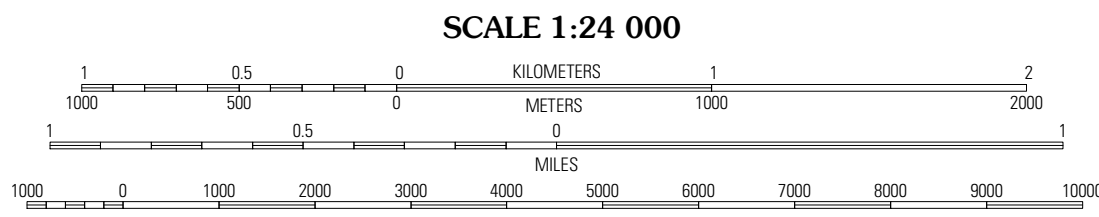
Produced by the United States Geological Survey  
North American Datum of 1983 (NAD83)  
World Geodetic System of 1984 (WGS84). Projection and  
1 000-meter grid: Universal Transverse Mercator, Zone 15S  
10 000-foot ticks: Kansas Coordinate System of 1983  
(north zone)

Imagery.....NAIP, June 2008  
Roads.....National Transportation Dataset, 2004  
Names.....GNIS, 2008  
Hydrography.....National Hydrography Dataset, 2008  
Contours.....National Elevation Dataset, 2008

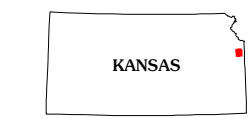
UTM GRID and 2009 MAGNETIC NORTH  
DECLINATION AT CENTER OF SHEET

1" = 8' 20" MILES  
2" = 45' 49" MILES

U.S. National Grid  
100,000-m Square ID  
UD 18  
UC 50  
Grid Zone Designation  
15S



This map was produced to conform with version 0.5.10 of the  
draft USGS Standards for 7.5-Minute Quadrangle Maps.  
A metadata file associated with this product is also draft version 0.5.10



De Soto	Olathe	Lenexa
Gardner	Ocheltree	Sidwell
Antioch	Spring Hill	Bacrus

ADJOINING 7.5' QUADRANGLES

ROAD CLASSIFICATION

Interstate Route  
US Route  
Ramp

State Route  
Local Road  
4WD

Interstate Route  
US Route  
State Route

OCHELTREE, KS  
2009