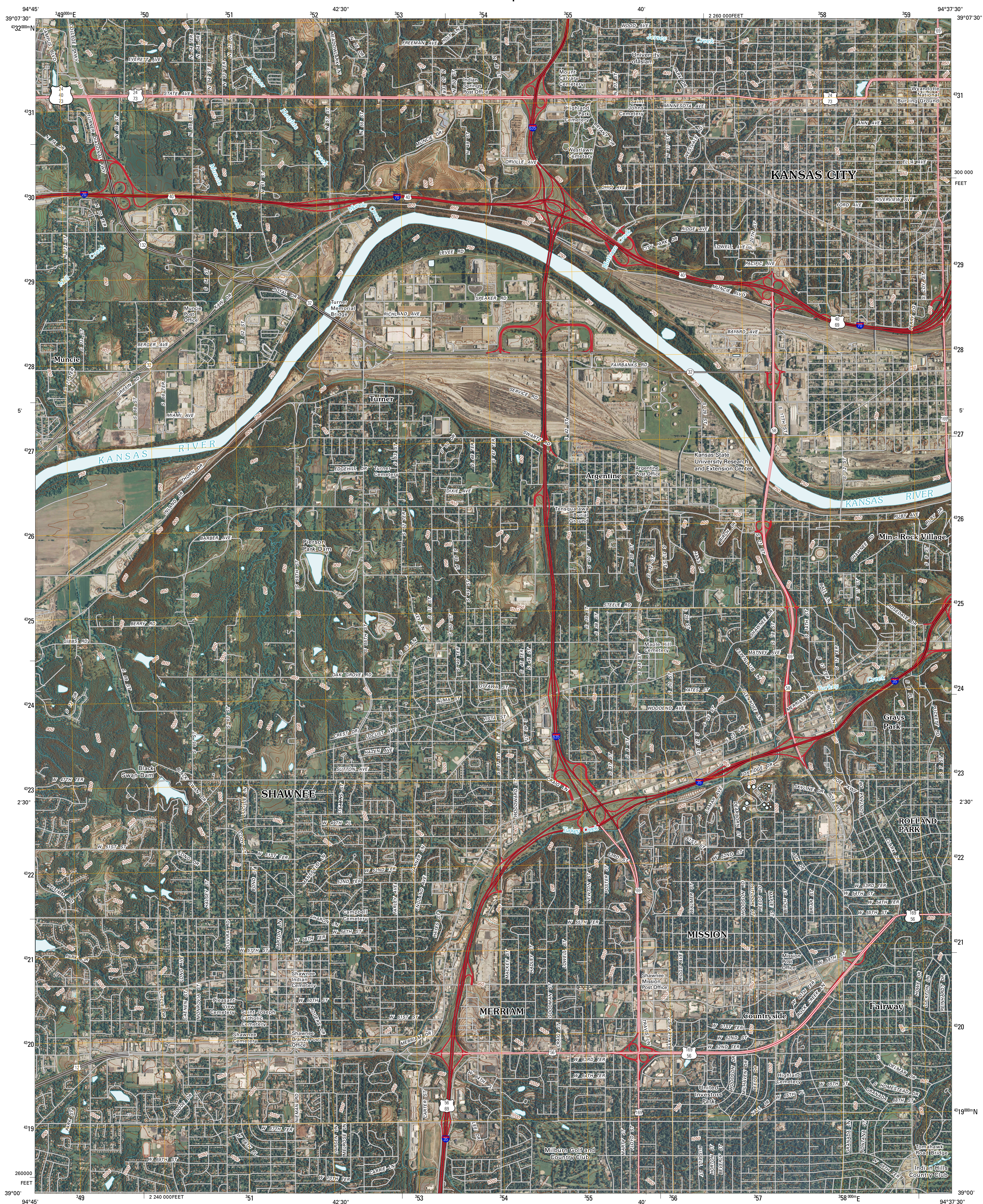




U.S. DEPARTMENT OF THE INTERIOR  
U. S. GEOLOGICAL SURVEY



SHAWNEE QUADRANGLE  
KANSAS  
7.5-MINUTE SERIES



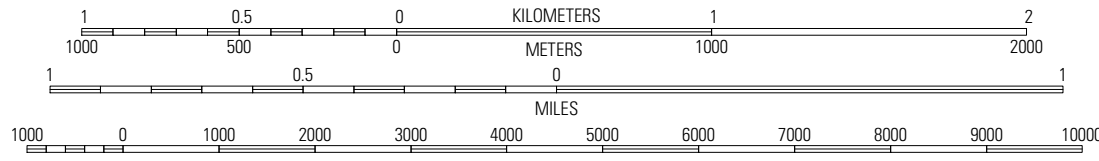
Produced by the United States Geological Survey  
North American Datum of 1983 (NAD83)  
World Geodetic System of 1984 (WGS84). Projection and  
1 000-meter grid: Universal Transverse Mercator, Zone 15S  
10 000-foot ticks: Kansas Coordinate System of 1983  
(north zone)

Imagery.....NAIP, July 2008  
Roads.....National Transportation Dataset, 2004  
Name.....CNIS, 2008  
Hydrography.....National Hydrography Dataset, 2008  
Contours.....National Elevation Dataset, 2008

UTM GRID AND 2009 MAGNETIC NORTH  
DECLINATION AT CENTER OF SHEET

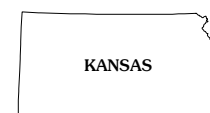
U.S. National Grid
100,000-m Square ID
UD
Grid Zone Designation
15S

SCALE 1:24 000



CONTOUR INTERVAL 10 FEET

This map was produced to conform with version 0.5.10 of the  
draft USGS Standards for 7.5-Minute Quadrangle Maps.  
A metadata file associated with this product is also draft version 0.5.10



QUADRANGLE LOCATION			
Wokcort	Parville	North Kansas City	
Edwardville	Shawnee	Kansas City	
Olathe	Lenexa	Grandview	

ADJOINING 7.5 QUADRANGLES

ROAD CLASSIFICATION

Interstate Route	State Route
US Route	Local Road
Ramp	4WD

Interstate Route US Route State Route

SHAWNEE, KS  
2009