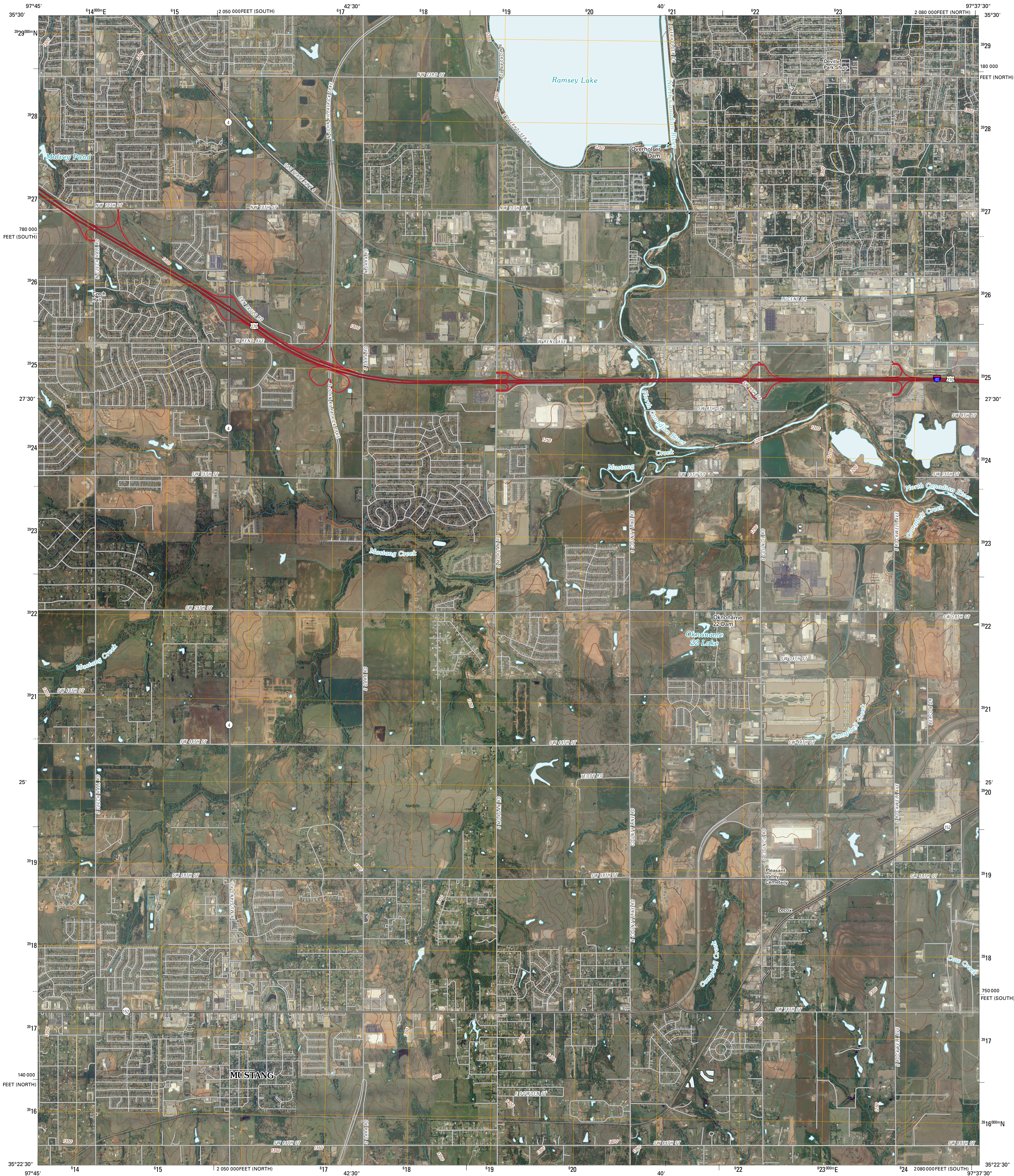




U.S. DEPARTMENT OF THE INTERIOR  
U. S. GEOLOGICAL SURVEY

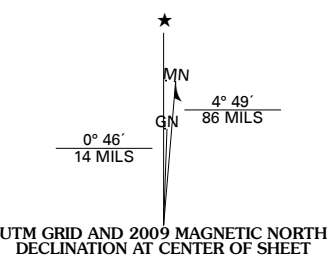


MUSTANG QUADRANGLE  
OKLAHOMA  
7.5-MINUTE SERIES



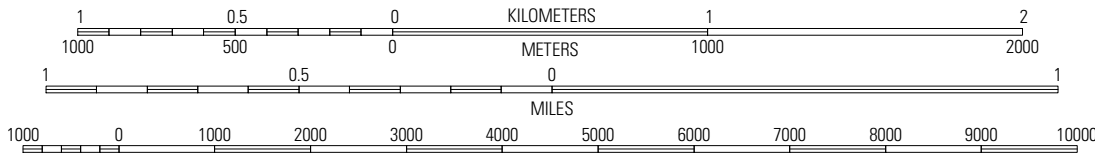
Produced by the United States Geological Survey  
North American Datum of 1983 (NAD83)  
World Geodetic System of 1984 (WGS84). Projection and  
1 000-meter grid: Universal Transverse Mercator, Zone 14S  
10 000-foot ticks: Oklahoma Coordinate System of 1983  
(north and south zones)

Imagery.....NAIP, May 2008  
Roads.....National Transportation Dataset, 2007 - 2008  
Names.....GNIS, 2008  
Hydrography.....National Hydrography Dataset, 2008  
Contours.....National Elevation Dataset, 2000



U.S. National Grid
100,000-m Square ID
PE
Grid Zone Designation
14S

SCALE 1:24 000



CONTOUR INTERVAL 10 FEET

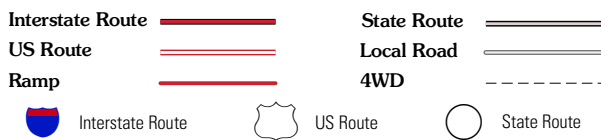
This map was produced to conform with version 0.5.10 of the  
draft USGS Standards for 7.5-Minute Quadrangle Maps.  
A metadata file associated with this product is also draft version 0.5.10



QUADRANGLE LOCATION		
Richland	Bethany	Britton
Minco NE	Mustang	Oklahoma City
Tuttle	Oklahoma City SW	Oklahoma City SE

ADJOINING 7.5' QUADRANGLES

ROAD CLASSIFICATION



MUSTANG, OK  
2009