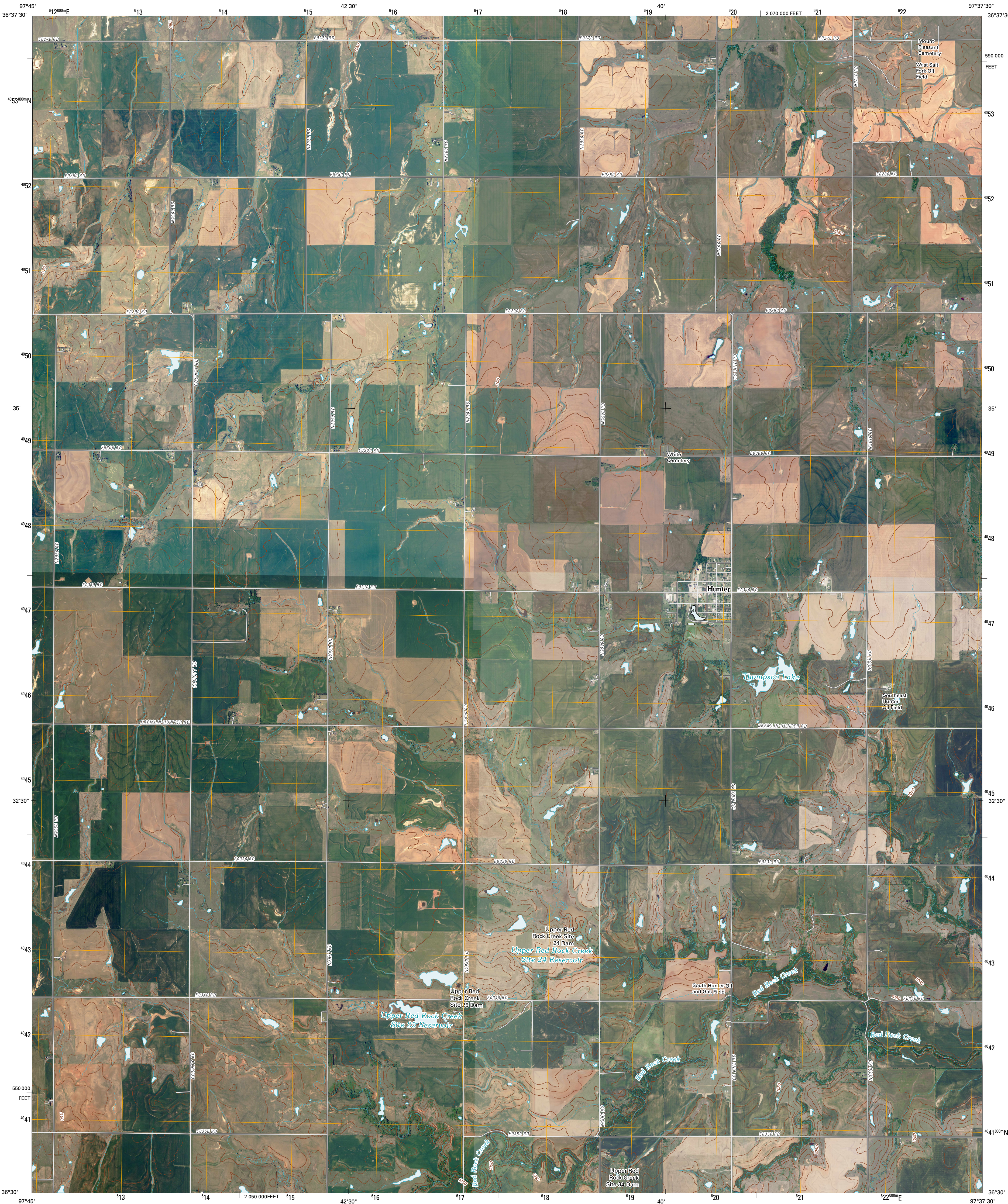




U.S. DEPARTMENT OF THE INTERIOR
U. S. GEOLOGICAL SURVEY

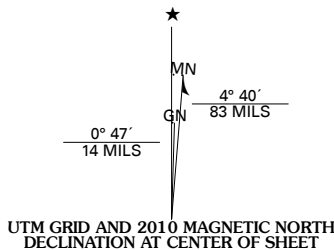


HUNTER QUADRANGLE
OKLAHOMA
7.5-MINUTE SERIES

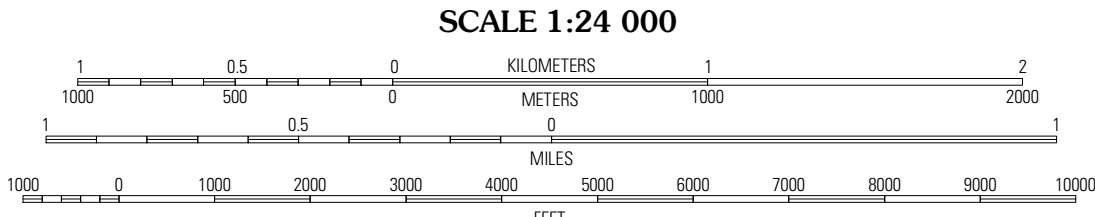


Produced by the United States Geological Survey
North American Datum of 1983 (NAD83)
World Geodetic System of 1984 (WGS84). Projection and
1 000-meter grid: Universal Transverse Mercator, Zone 14S
10 000-foot ticks: Oklahoma Coordinate System of 1983
(north zone)

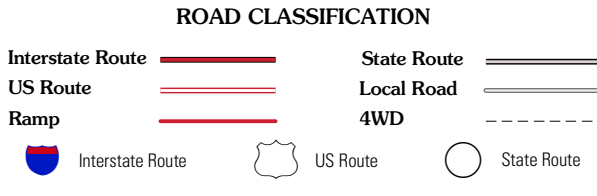
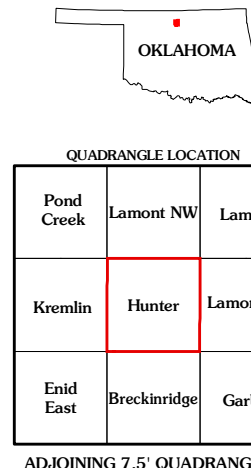
Imagery.....NAIP, May 2008
Roads.....National Transportation Dataset, 2008
Names.....GNIS, 2006
Hydrography.....National Hydrography Dataset, 2008
Contours.....National Elevation Dataset, 2008



U.S. National Grid
100,000-m Square ID
PF
Grid Zone Designation
14S



CONTOUR INTERVAL 10 FEET
This map was produced to conform with version 0.5.10 of the
draft USGS Standards for 7.5-Minute Quadrangle Maps.
A metadata file associated with this product is also draft version 0.5.10



HUNTER, OK
2010