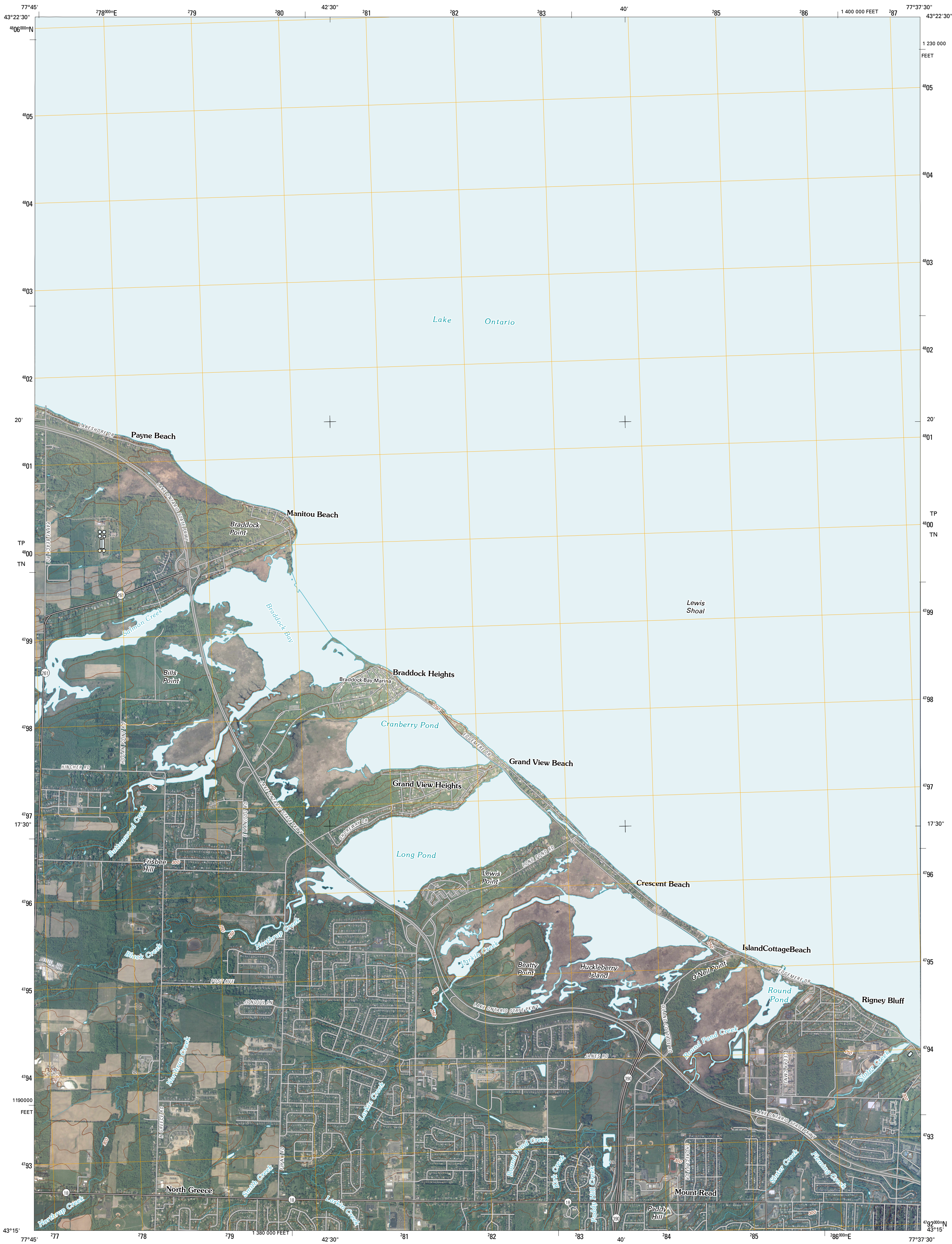




U.S. DEPARTMENT OF THE INTERIOR
U. S. GEOLOGICAL SURVEY



BRADDOCK HEIGHTS QUADRANGLE
NEW YORK
7.5-MINUTE SERIES



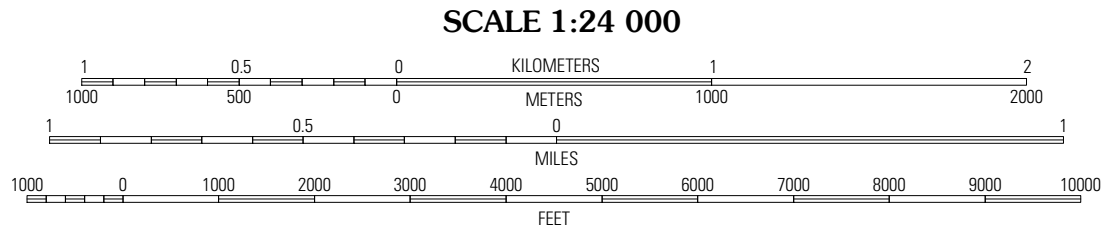
Produced by the United States Geological Survey
North American Datum of 1983 (NAD83)
World Geodetic System of 1984 (WGS84). Projection and
1 000-meter grid: Universal Transverse Mercator, Zone 18T
10 000-foot ticks: New York Coordinate System of 1983
(west zone)

Imagery.....NAIP, May 2008
Roads.....US Census Bureau TIGER data
with limited USGS updates, 2004
Names.....GNIS, 2008
Hydrography.....National Hydrography Dataset, 2008
Contours.....National Elevation Dataset, 2003

UTM GRID AND 2010 MAGNETIC NORTH
DECLINATION AT CENTER OF SHEET

11° 34' 30" N
206 MILES
1° 51' 30" N
33 MILES

U.S. National Grid
100,000-m Square ID
TP " (R)
TN
Grid Zone Designation
18T



This map was produced to conform with version 0.5.10 of the
draft USGS Standards for 7.5-Minute Quadrangle Maps.
A metadata file associated with this product is also draft version 0.5.10



ADJOINING 7.5 QUADRANGLES			
Hilton	Braddock Heights	Rochester East OE N	
Spencerport	Rochester West	Rochester East	

ROAD CLASSIFICATION			
Interstate Route	State Route	Local Road	4WD
US Route			
Ramp			
Interstate Route	US Route	State Route	

BRADDOCK HEIGHTS, NY
2010