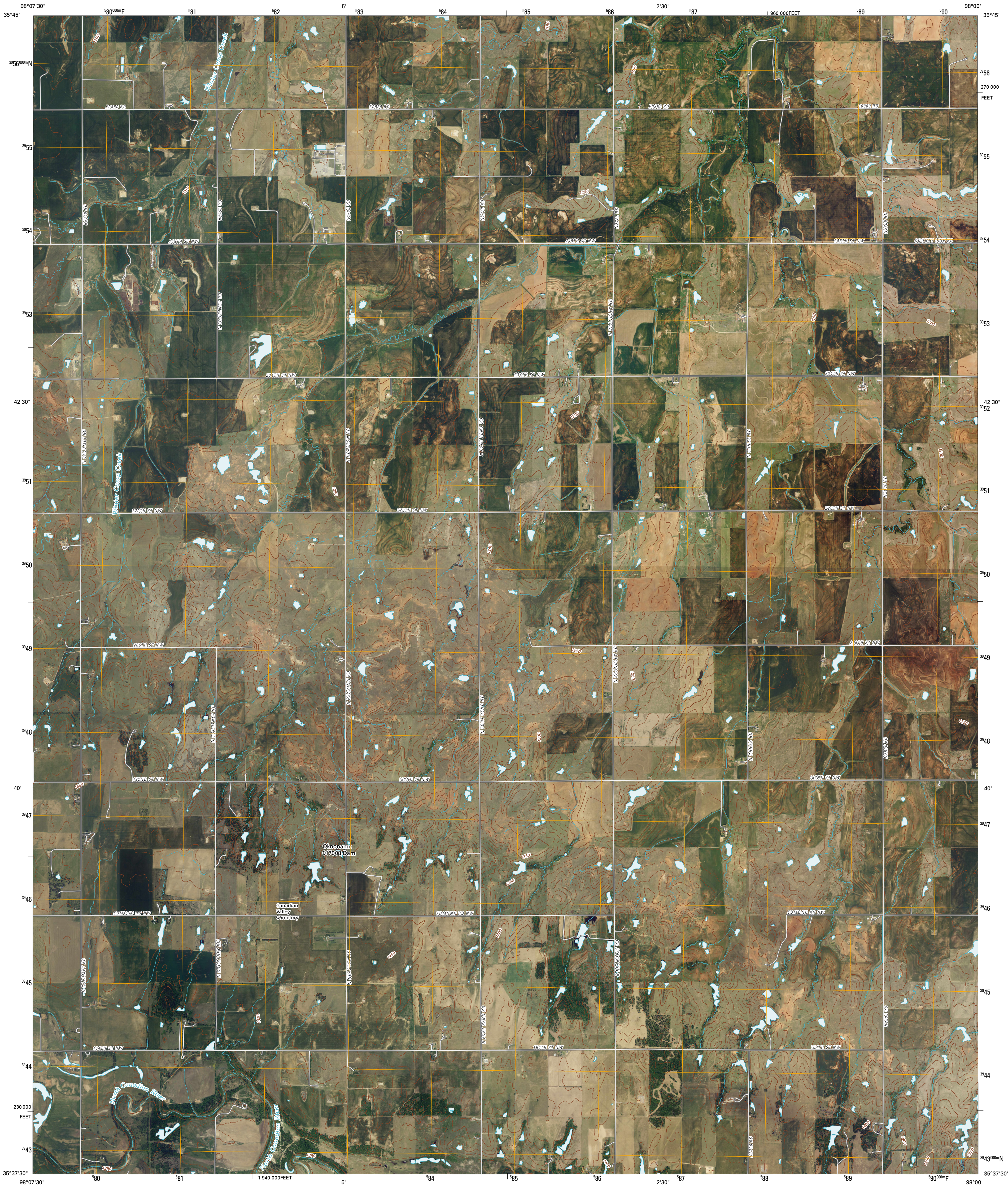




U.S. DEPARTMENT OF THE INTERIOR
U. S. GEOLOGICAL SURVEY

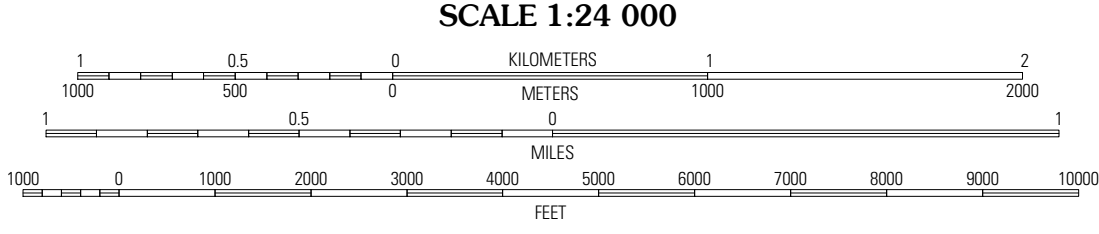
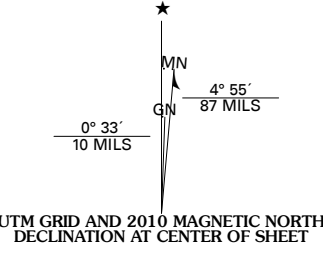


FORT RENO NE QUADRANGLE
OKLAHOMA
7.5-MINUTE SERIES



Produced by the United States Geological Survey
North American Datum of 1983 (NAD83)
World Geodetic System of 1984 (WGS84). Projection and
1 000-meter grid: Universal Transverse Mercator, Zone 14S
10 000-foot ticks: Oklahoma Coordinate System of 1983
(north zone)

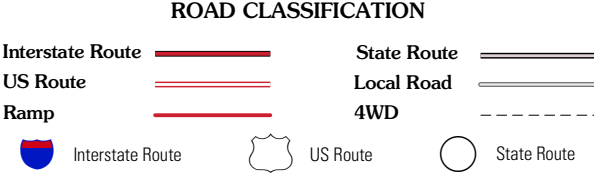
Imagery.....NAIP, May 2008
Roads.....National Transportation Dataset, 2006 - 2007
Names.....GNIS, 2008
Hydrography.....National Hydrography Dataset, 2008
Contours.....National Elevation Dataset, 2000



This map was produced to conform with version 0.5.10 of the
draft USGS Standards for 7.5-Minute Quadrangle Maps.
A metadata file associated with this product is also draft version 0.5.10



QUADRANGLE LOCATION		
Omega	Loyal SE	Kingfisher
Porcupine Butte	Fort Reno NE	Okarche
Fort Reno SW	Fort Reno	El Reno



FORT RENO NE, OK
2010