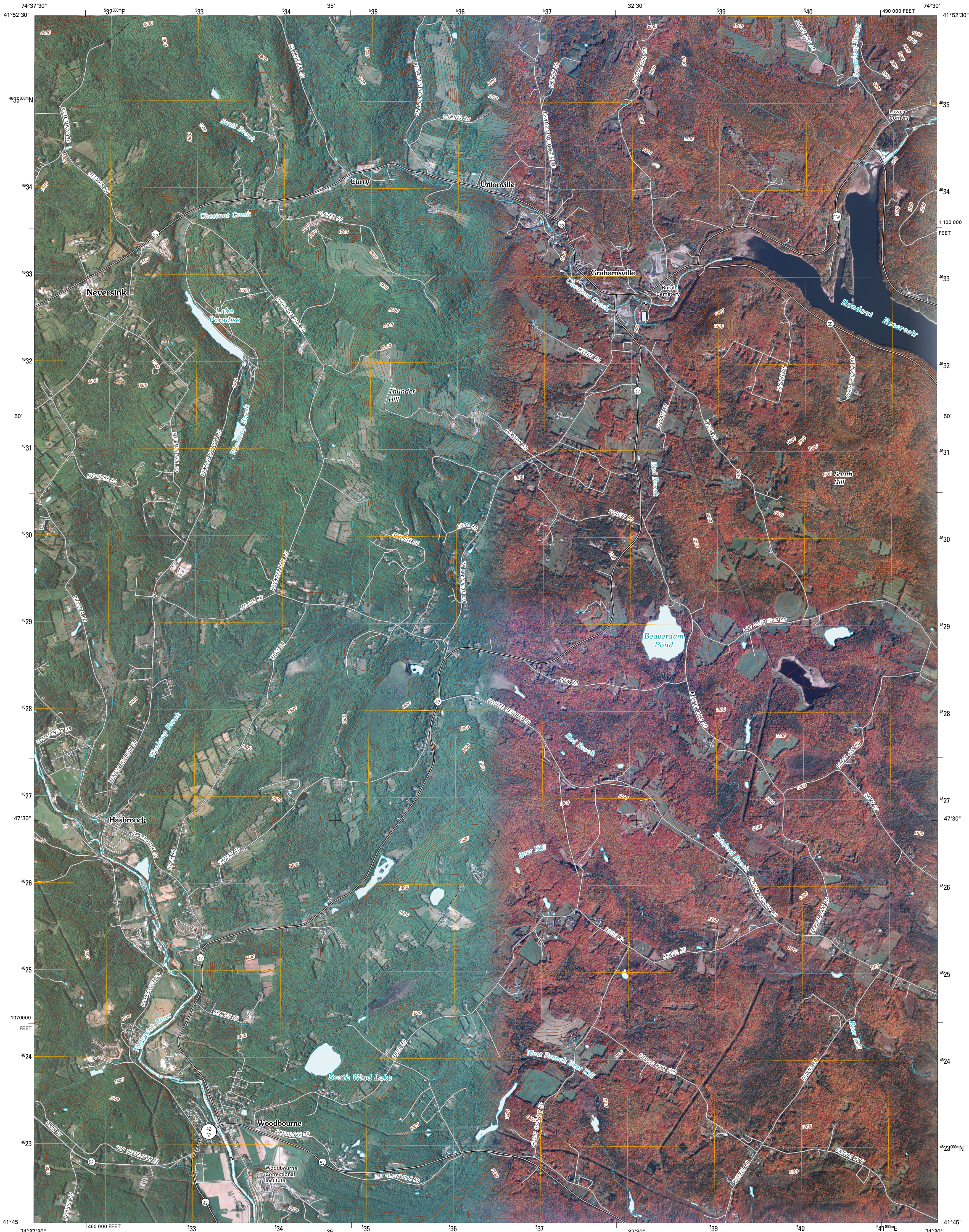




U.S. DEPARTMENT OF THE INTERIOR
U. S. GEOLOGICAL SURVEY

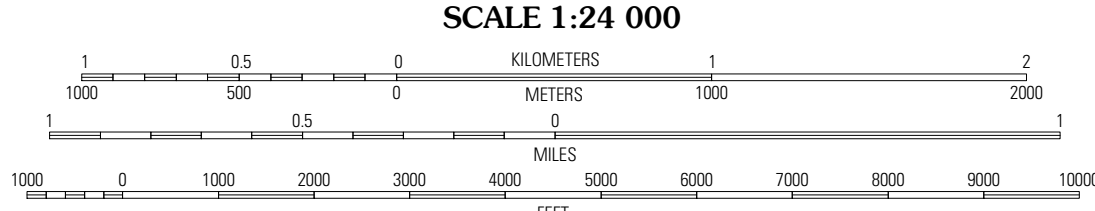
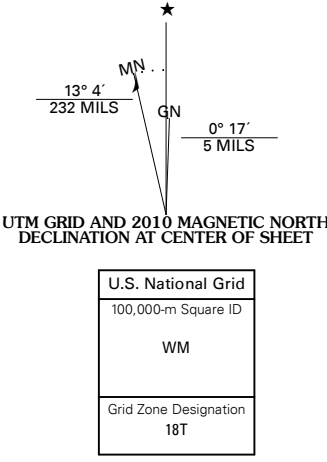


GRAHAMSVILLE QUADRANGLE
NEW YORK
7.5-MINUTE SERIES



Produced by the United States Geological Survey
North American Datum of 1983 (NAD83). Projection and
World Geodetic System of 1984 (WGS84). Projection and
1 000-meter grid: Universal Transverse Mercator, Zone 18T
10 000-foot ticks: New York Coordinate System of 1983
(east zone)

Imagery.....NAP, May 2008 - October 2008
Roads.....US Census Bureau TIGER data
with limited USGS updates, 2006
Name.....GNIS, 2008
Hydrography.....National Hydrography Dataset, 2008
Contours.....National Elevation Dataset, 1999



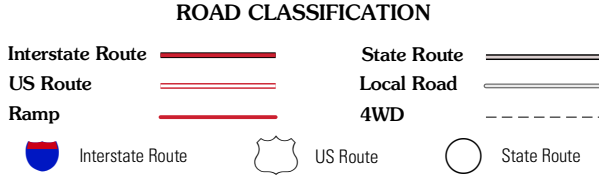
CONTOUR INTERVAL 20 FEET

This map was produced to conform with version 0.5.10 of the
draft USGS Standards for 7.5-Minute Quadrangle Maps.
A metadata file associated with this product is also draft version 0.5.10



| QUADRANGLE LOCATION | | | |
|---------------------|--------------|--------------------|--|
| Willowence | Claryville | Pekamoose Mountain | |
| Liberty East | Grahamsville | Rondout Reservoir | |
| Monticello | Woodridge | Ellenville | |

ADJOINING 7.5' QUADRANGLES



GRAHAMSVILLE, NY
2010