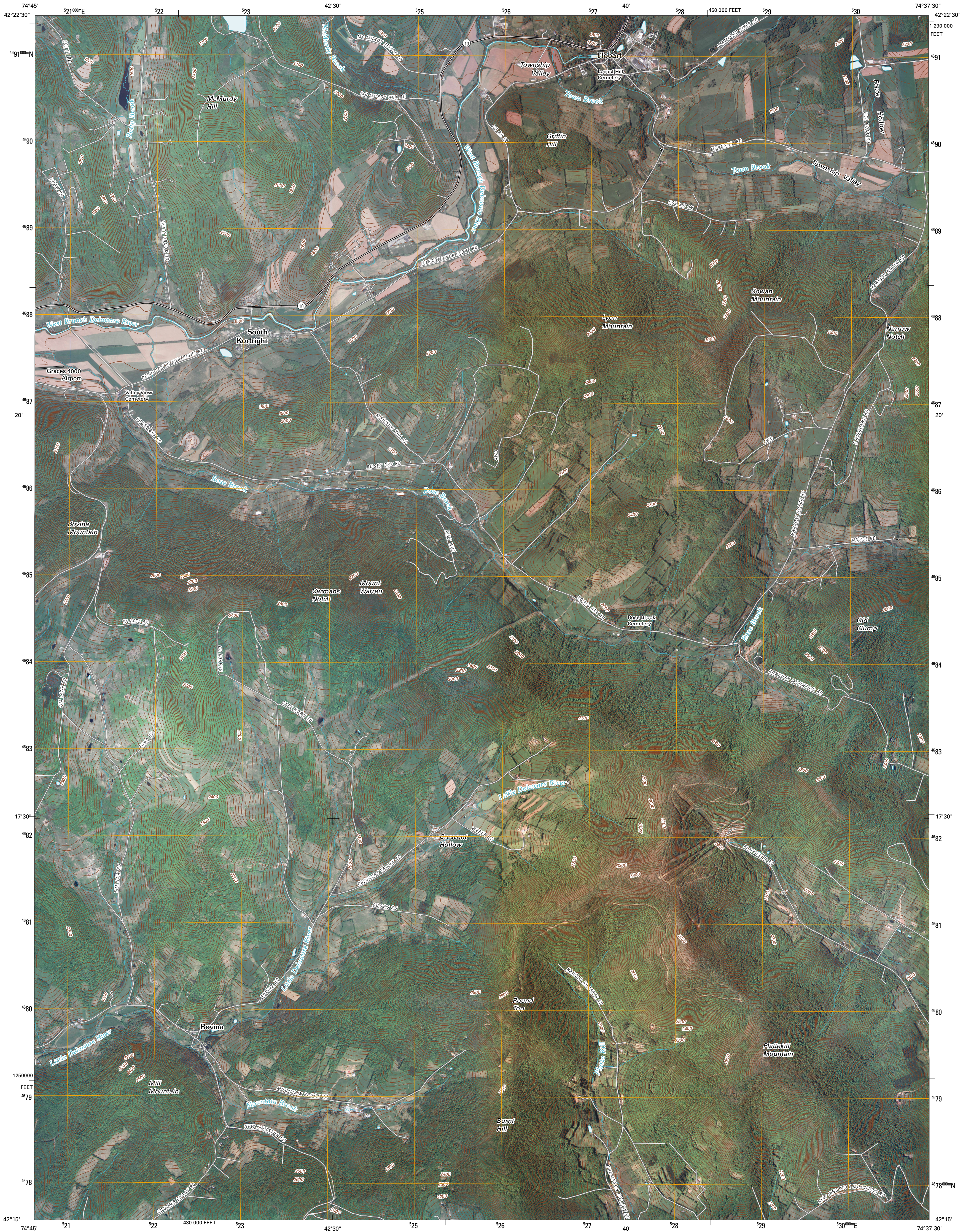




U.S. DEPARTMENT OF THE INTERIOR  
U. S. GEOLOGICAL SURVEY

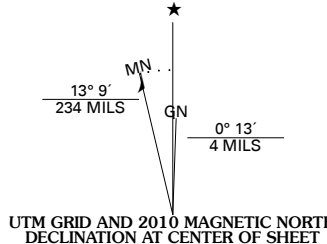


HOBART QUADRANGLE  
NEW YORK  
7.5-MINUTE SERIES

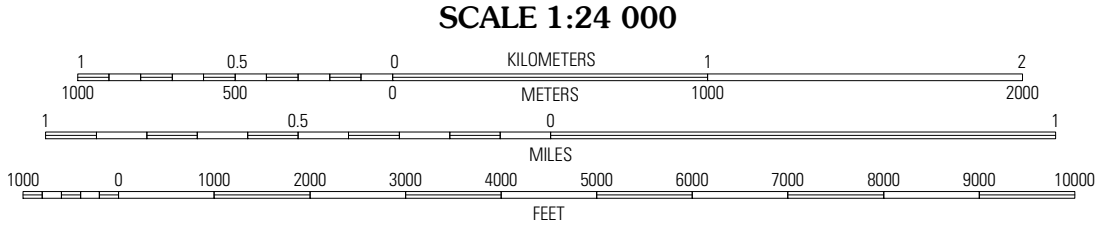


Produced by the United States Geological Survey  
North American Datum of 1983 (NAD83)  
World Geodetic System of 1984 (WGS84). Projection and  
1 000-meter grid: Universal Transverse Mercator, Zone 18T  
10 000-foot ticks: New York Coordinate System of 1983  
(east zone)

Imagery.....NAIP, May 2008  
Roads.....US Census Bureau TIGER data  
with limited USGS updates, 2006  
Names.....GNIS, 2008  
Hydrography.....National Hydrography Dataset, 2008  
Contours.....National Elevation Dataset, 1998



U.S. National Grid
100,000-m Square ID
WM
Grid Zone Designation
18T



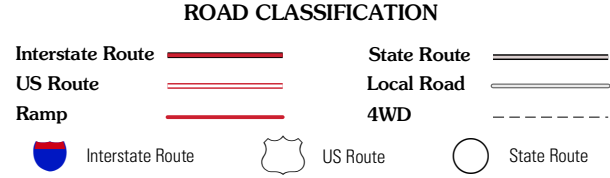
CONTOUR INTERVAL 20 FEET

This map was produced to conform with version 0.5.10 of the  
draft USGS Standards for 7.5-Minute Quadrangle Maps.  
A metadata file associated with this product is also draft version 0.5.10



Davenport	Harpersfield	Stanford
Bloomville	Hobart	Roxbury
Andes	Margaretville	Fleischmanns

ADJOINING 7.5' QUADRANGLES



HOBART, NY  
2010