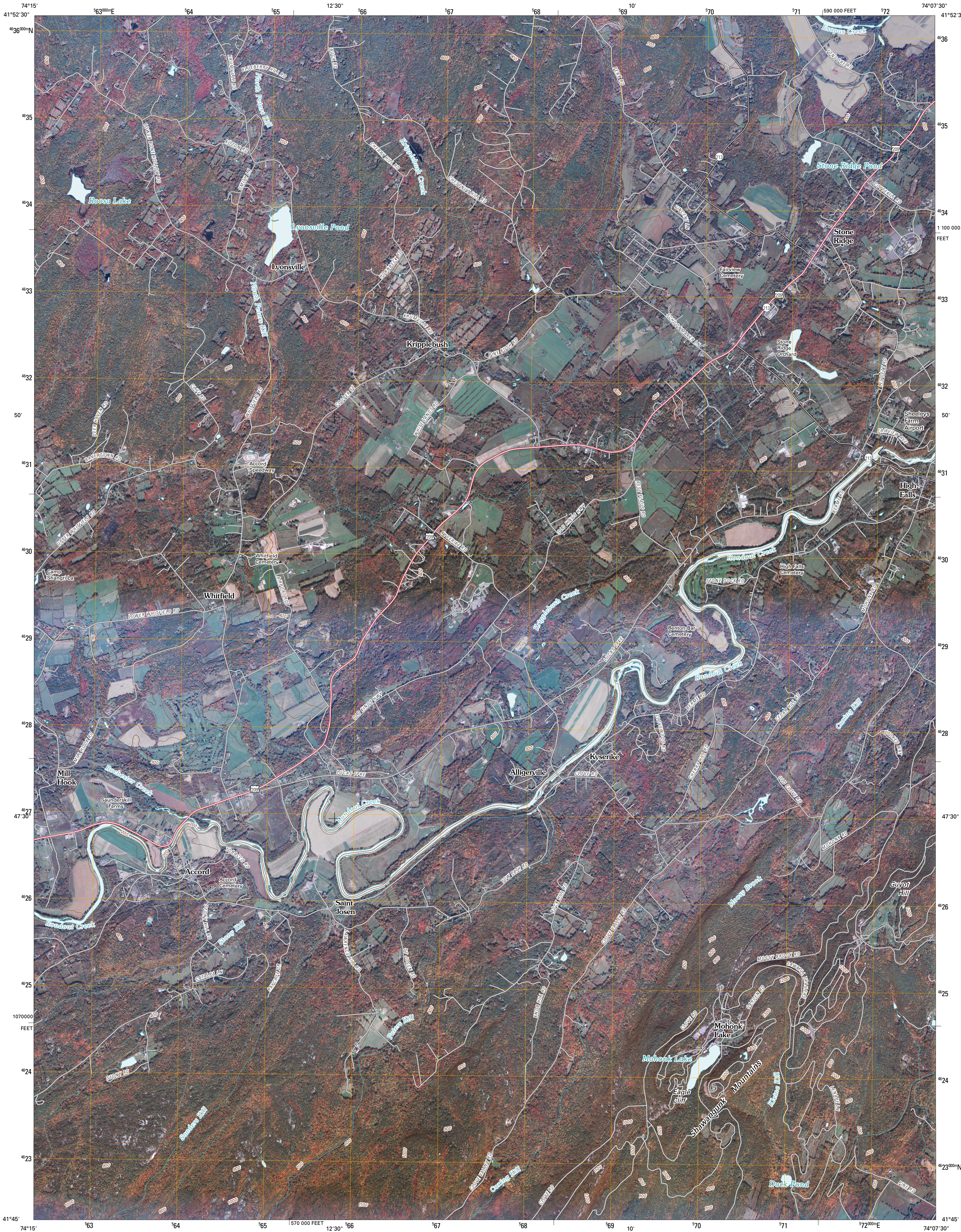




U.S. DEPARTMENT OF THE INTERIOR  
U. S. GEOLOGICAL SURVEY

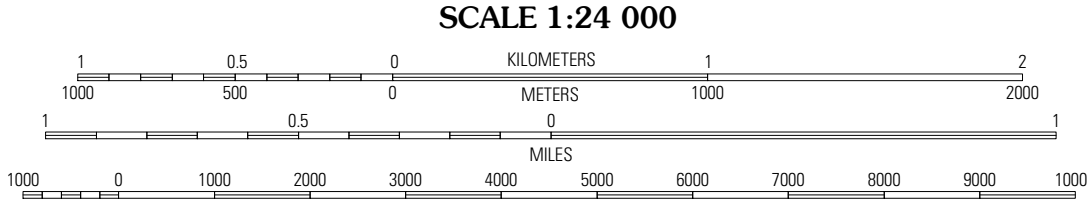
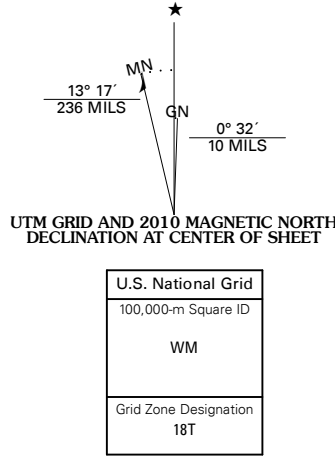


MOHONK LAKE QUADRANGLE  
NEW YORK  
7.5-MINUTE SERIES



Produced by the United States Geological Survey  
North American Datum of 1983 (NAD83). Projection and  
World Geodetic System of 1984 (WGS84). Projection and  
1 000-meter grid: Universal Transverse Mercator, Zone 18T  
10 000-foot ticks: New York Coordinate System of 1983  
(east zone)

Imagery:.....NAIP, October 2008  
Roads:.....US Census Bureau TIGER data  
with limited USGS updates, 2006  
Names:.....GNIS, 2008  
Hydrography:.....National Hydrography Dataset, 2008  
Contours:.....National Elevation Dataset, 1999

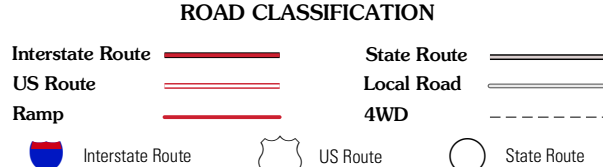


CONTOUR INTERVAL 20 FEET  
This map was produced to conform with version 0.5.10 of the  
draft USGS Standards for 7.5-Minute Quadrangle Maps.  
A metadata file associated with this product is also draft version 0.5.10



QUADRANGLE LOCATION		
West Shokan	Adrian	Kingston West
Kerhonkson	Mohonk Lake	Rosendale
Napanoch	Gardiner	Clintondale

ADJOINING 7.5' QUADRANGLES



MOHONK LAKE, NY  
2010