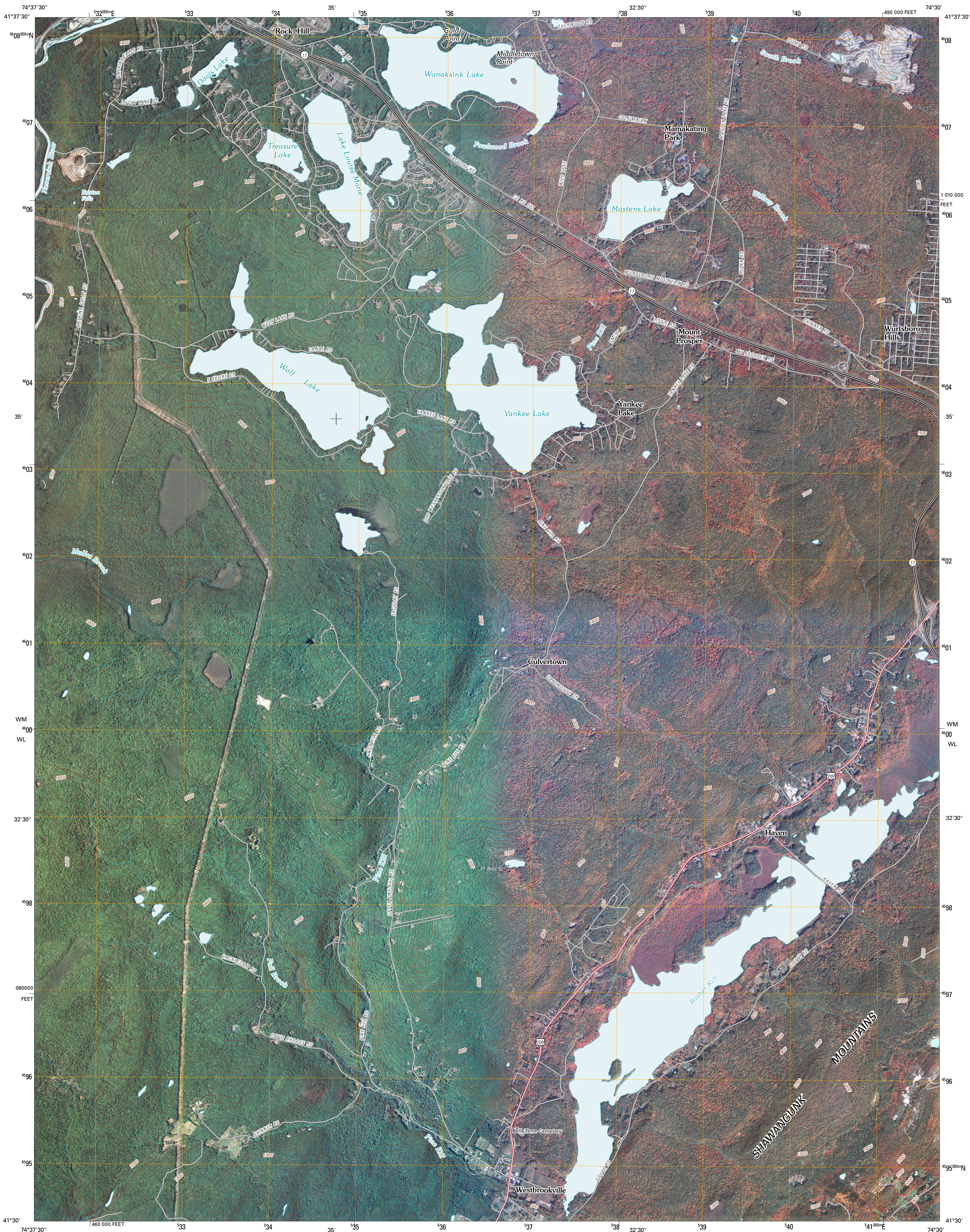




U.S. DEPARTMENT OF THE INTERIOR
U. S. GEOLOGICAL SURVEY

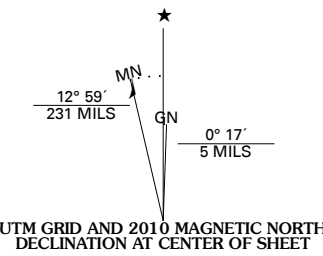


YANKEE LAKE QUADRANGLE
NEW YORK
7.5-MINUTE SERIES

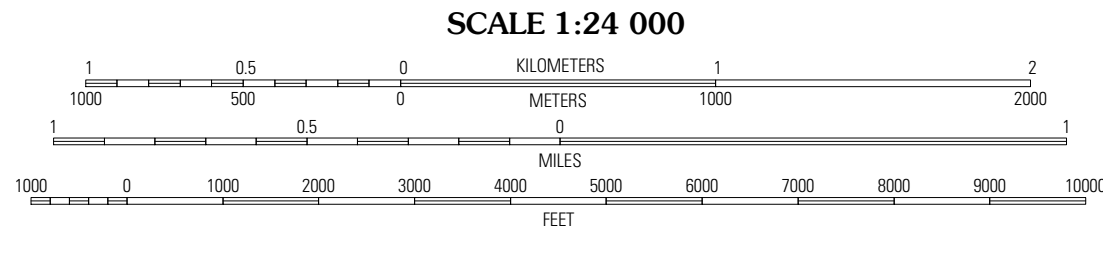


Produced by the United States Geological Survey
North American Datum of 1983 (NAD83)
World Geodetic System of 1984 (WGS84). Projection and
1 000-meter grid: Universal Transverse Mercator, Zone 18T
10 000-foot ticks: New York Coordinate System of 1983
(east zone)

Imagery.....NAIP, May 2008 - October 2008
Roads.....US Census Bureau TIGER data
with limited USGS updates, 2006
Names.....National Hydrography Dataset, 2008
Hydrography.....National Hydrography Dataset, 2008
Contours.....National Elevation Dataset, 1999



U.S. National Grid
100,000m Square ID
WM = 08
WL
Grid Zone Designation
18T



CONTOUR INTERVAL 20 FEET

This map was produced to conform with version 0.5.10 of the
draft USGS Standards for 7.5-Minute Quadrangle Maps.
A metadata file associated with this product is also draft version 0.5.10



QUADRANGLE LOCATION		
Monticello	Woodridge	Ellenville
Hartwood	Yankee Lake	Wurtsboro
Port Jervis North	Ottisville	Middletown

ADJOINING 7.5' QUADRANGLES

ROAD CLASSIFICATION		
Interstate Route	State Route	Local Road
US Route	4WD	
Ramp		
Interstate Route	US Route	State Route

YANKEE LAKE, NY
2010