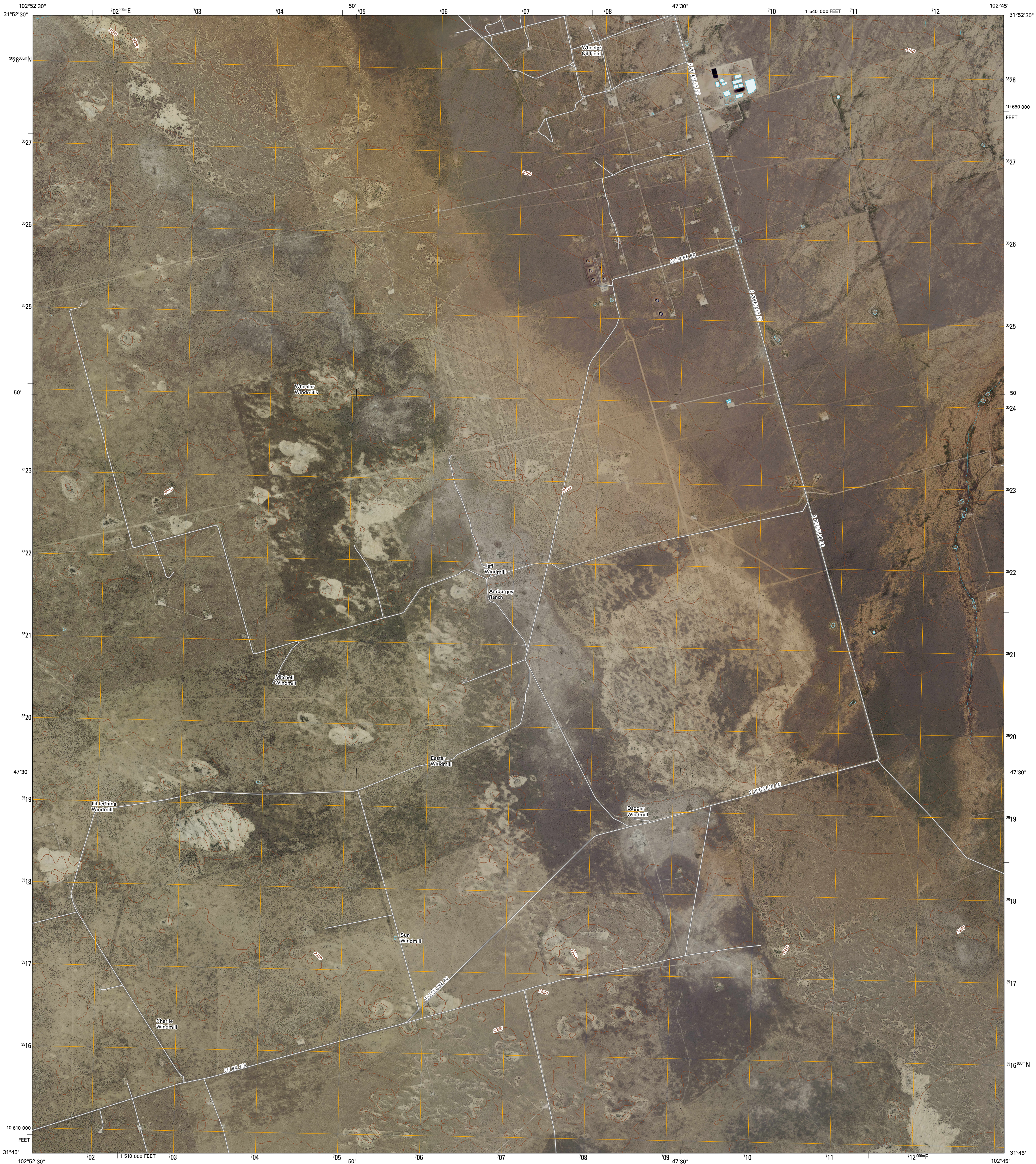




U.S. DEPARTMENT OF THE INTERIOR  
U. S. GEOLOGICAL SURVEY

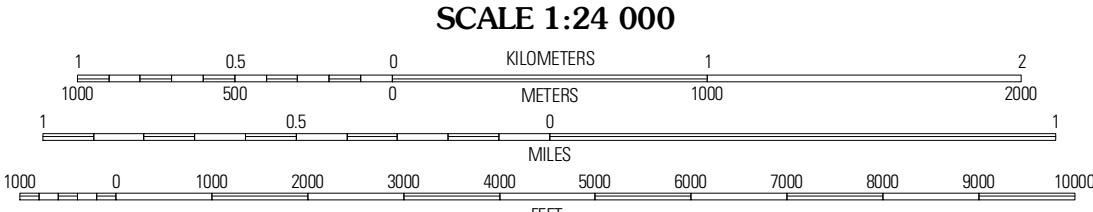
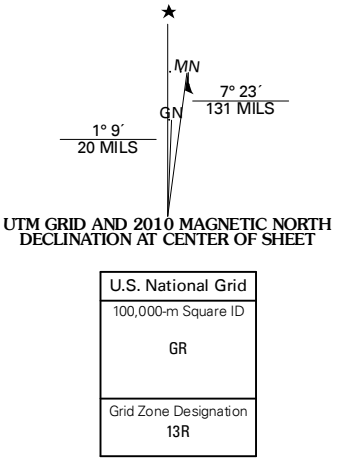


AMBURGEY RANCH QUADRANGLE  
TEXAS  
7.5-MINUTE SERIES



Produced by the United States Geological Survey  
North American Datum of 1983 (NAD83)  
World Geodetic System of 1984 (WGS84). Projection and  
1 000-meter grid. Universal Transverse Mercator, Zone 13R  
10 000-foot ticks: Texas Coordinate System of 1983  
(central zone)

Imagery.....NAIP, September 2008  
Roads.....with limited USGS updates, 2006 - 2008  
Names.....GNIS, 2008  
Hydrography.....National Hydrography Dataset, 1995  
Contours.....National Elevation Dataset, 2008



CONTOUR INTERVAL 10 FEET

This map was produced to conform with version 0.5.10 of the  
draft USGS Standards for 7.5-Minute Quadrangle Maps.  
A metadata file associated with this product is also draft version 0.5.10



QUADRANGLE LOCATION		
Notrees NW	Notrees	Tumbough Corner
Wheeler Ranch	Amburgey Ranch	Red Lakes
Chico Ranch	Cowden Place	Metz

ADJOINING 7.5' QUADRANGLES  
TX 31102-331

ROAD CLASSIFICATION		
Interstate Route	State Route	Local Road
US Route	4WD	
Ramp		

AMBURGEY RANCH, TX  
2010