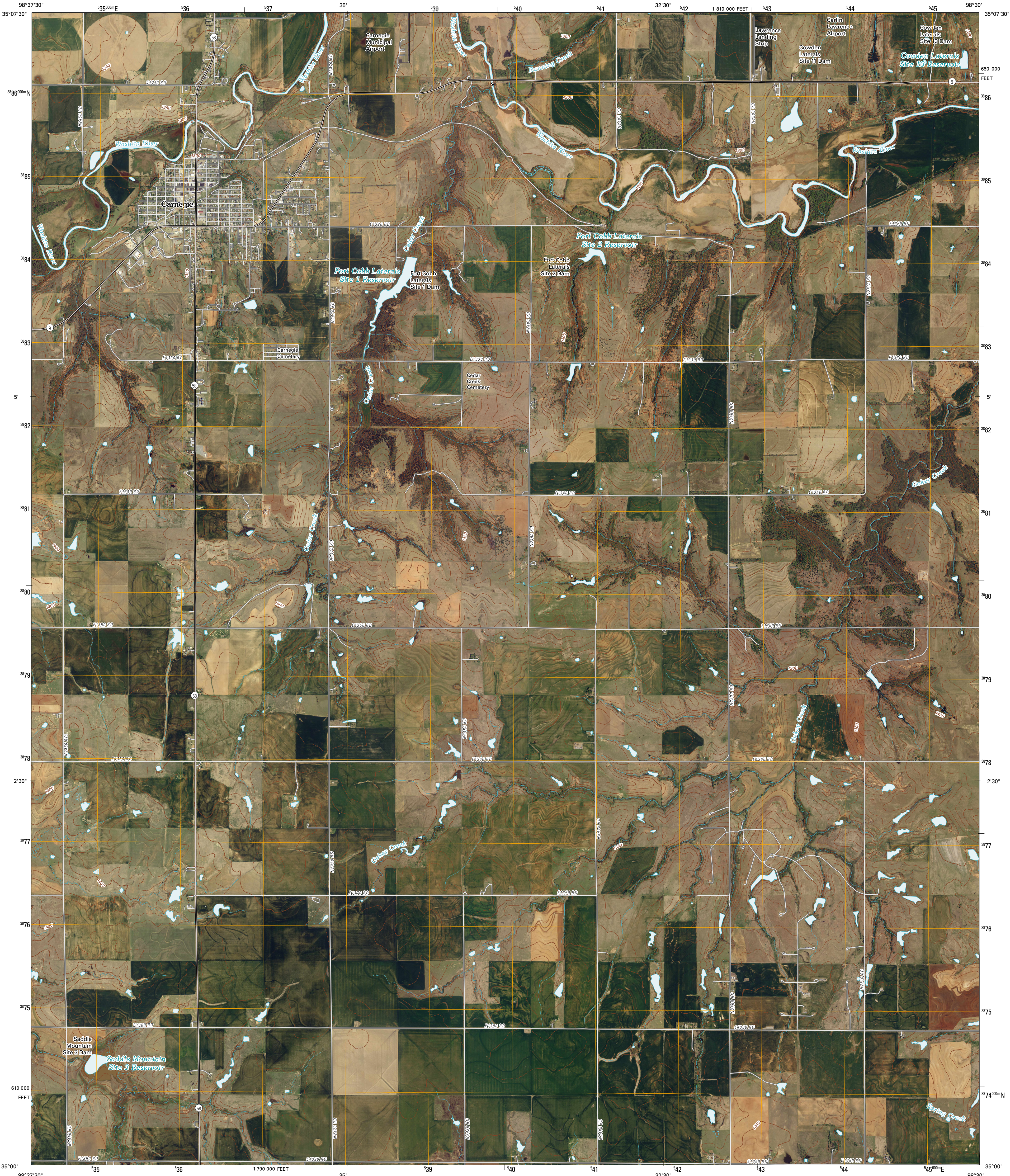




U.S. DEPARTMENT OF THE INTERIOR  
U. S. GEOLOGICAL SURVEY

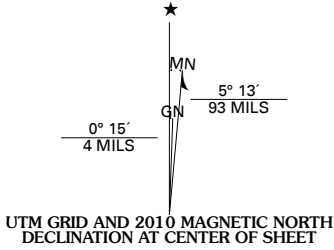


CARNEGIE QUADRANGLE  
OKLAHOMA  
7.5-MINUTE SERIES

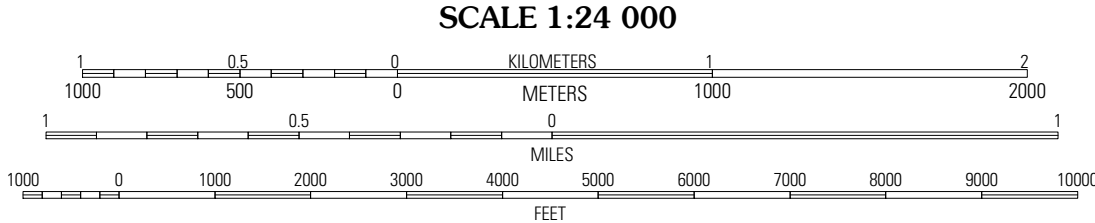


Produced by the United States Geological Survey  
North American Datum of 1983 (NAD83)  
World Geodetic System of 1984 (WGS84). Projection and  
1 000-meter grid: Universal Transverse Mercator, Zone 14S  
10 000-foot ticks: Oklahoma Coordinate System of 1983  
(south zone)

Imagery.....NAIP, April 2008  
Roads.....National Transportation Dataset, 2005  
Names.....National Hydrography Dataset, 2008  
Hydrography.....National Hydrography Dataset, 2008  
Contours.....National Elevation Dataset, 2000



U.S. National Grid 100 000-m Square ID
ND
Grid Zone Designation
14S



SCALE 1:24 000

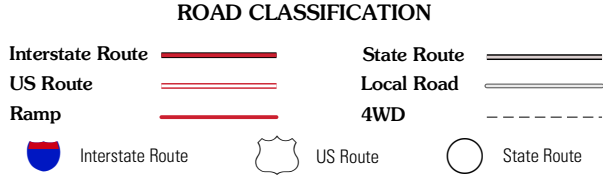
CONTOUR INTERVAL 10 FEET

This map was produced to conform with version 0.5.10 of the  
draft USGS Standards for 7.5-Minute Quadrangle Maps.  
A metadata file associated with this product is also draft version 0.5.10



Cowden	Alfalfa	Fort Cobb Dam
Stinking Creek	Carnegie	Fort Cobb
Bally Mountain	Alden	Boone

ADJOINING 7.5' QUADRANGLES



CARNEGIE, OK  
2010