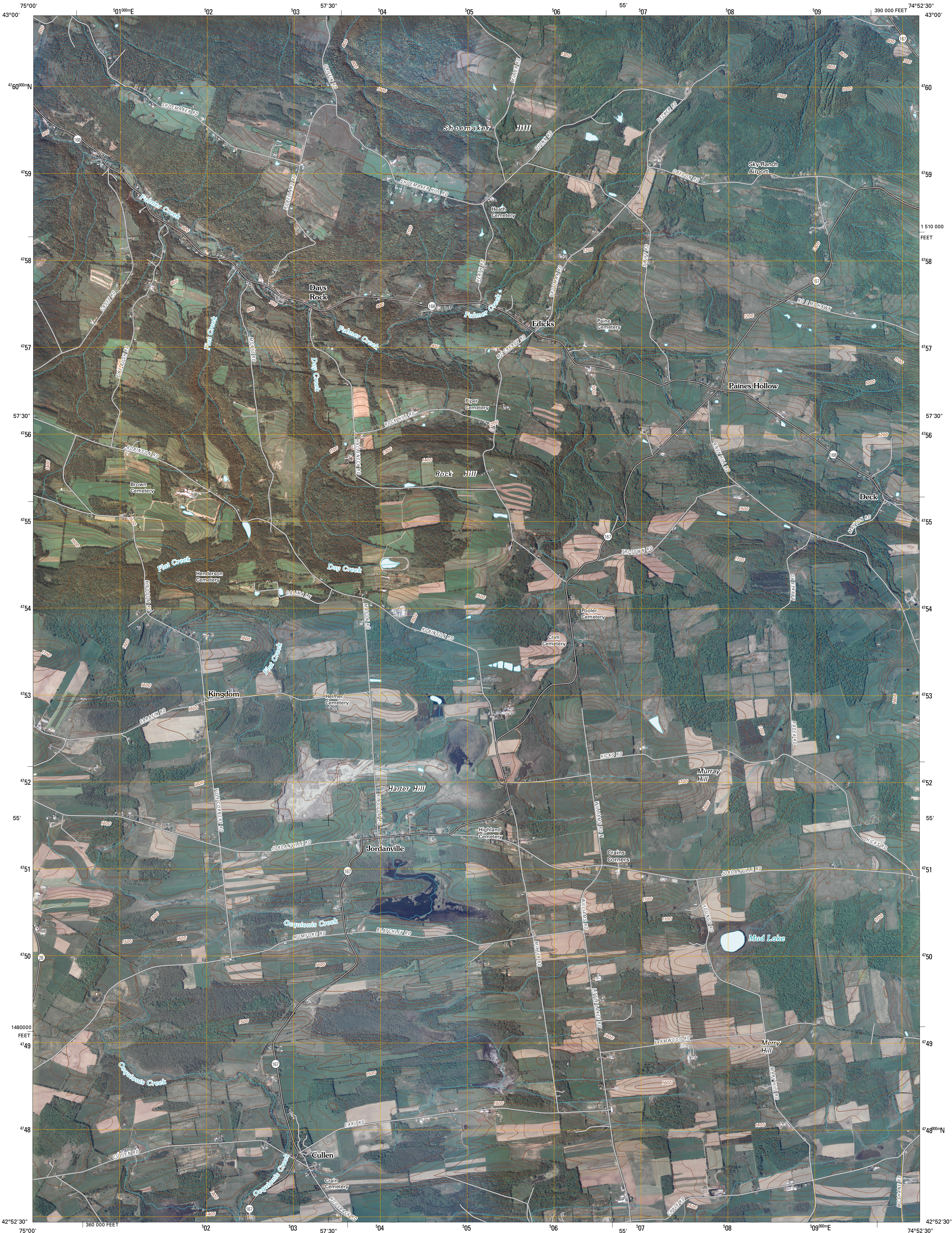




U.S. DEPARTMENT OF THE INTERIOR  
U. S. GEOLOGICAL SURVEY

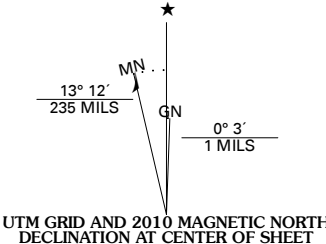


JORDANVILLE QUADRANGLE  
NEW YORK  
7.5-MINUTE SERIES

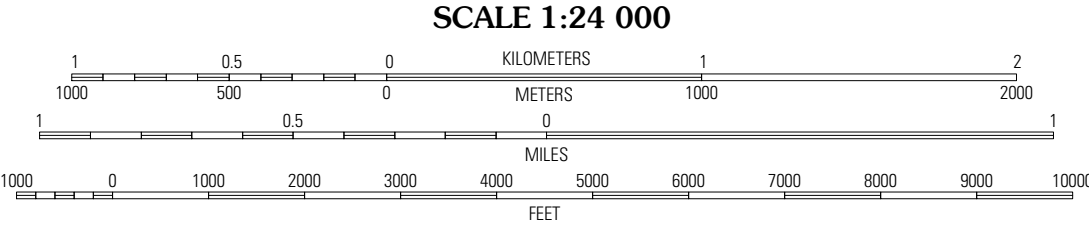


Produced by the United States Geological Survey  
North American Datum of 1983 (NAD83)  
World Geodetic System of 1984 (WGS84). Projection and  
1 000-meter grid: Universal Transverse Mercator, Zone 18T  
10 000-foot ticks: New York Coordinate System of 1983  
(east zone)

Imagery.....NAIP, May 2008 - September 2008  
Roads.....US Census Bureau TIGER data  
with limited USGS updates, 2006  
Names.....GNIS, 2008  
Hydrography.....National Hydrography Dataset, 2008  
Contours.....National Elevation Dataset, 1998



U.S. National Grid 100 000-m Square ID
WN
Grid Zone Designation 18T



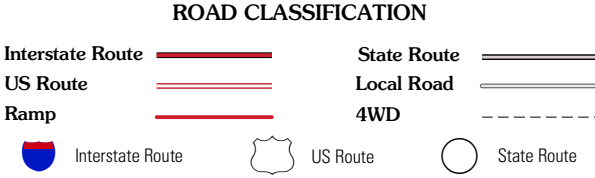
CONTOUR INTERVAL 20 FEET

This map was produced to conform with version 0.5.10 of the  
draft USGS Standards for 7.5-Minute Quadrangle Maps.  
A metadata file associated with this product is also draft version 0.5.10



QUADRANGLE LOCATION			
Ilion	Herkimer	Little Falls	
Millers Mills	Jordanville	Van Hornesville	
Schugher Lake	Richfield Springs	East Springfield	

ADJOINING 7.5 QUADRANGLES



JORDANVILLE, NY  
2010