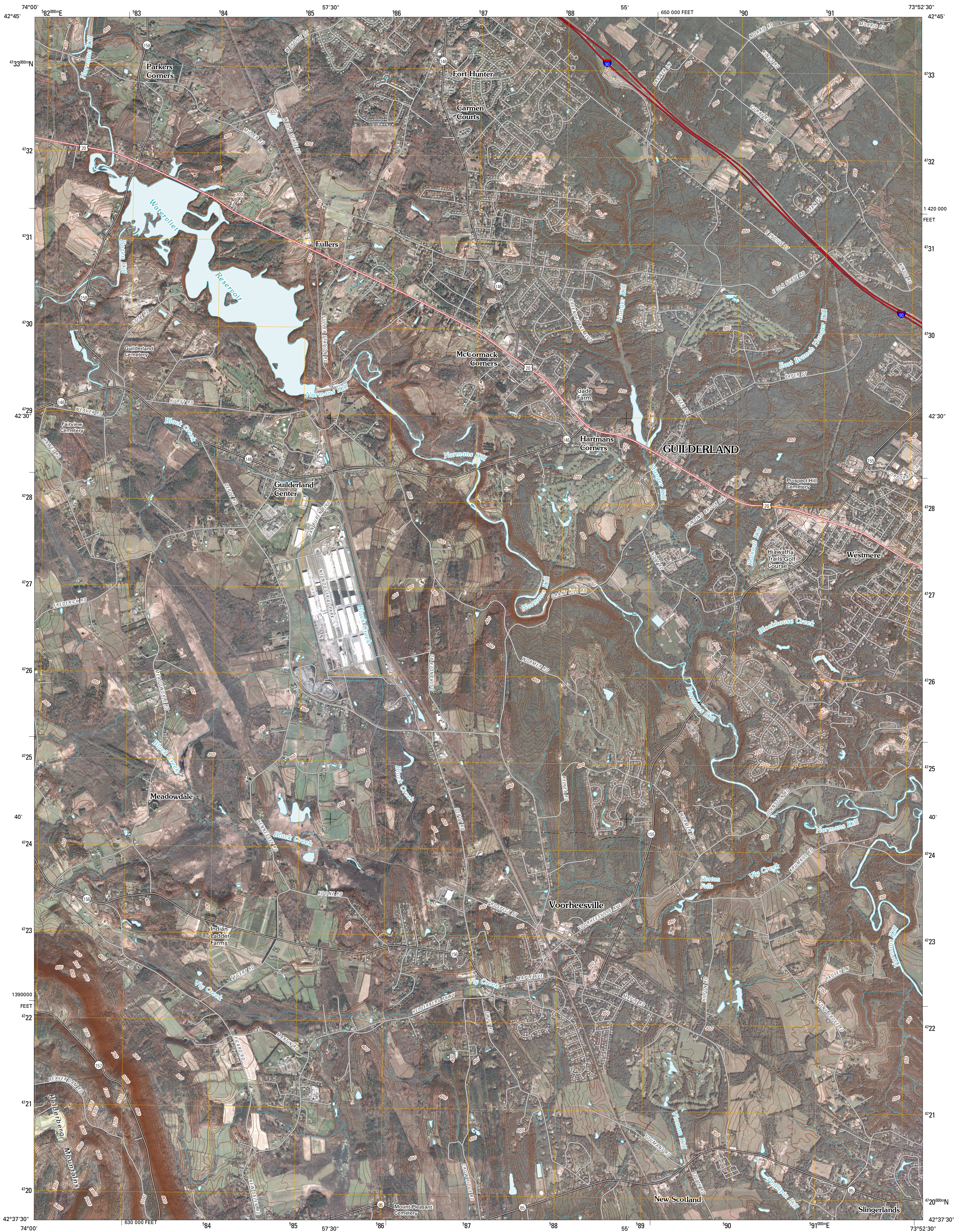




U.S. DEPARTMENT OF THE INTERIOR
U. S. GEOLOGICAL SURVEY

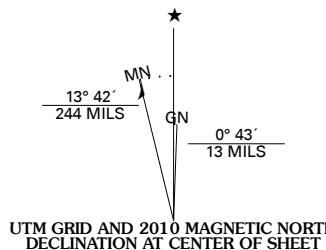


VOORHEESVILLE QUADRANGLE
NEW YORK
7.5-MINUTE SERIES

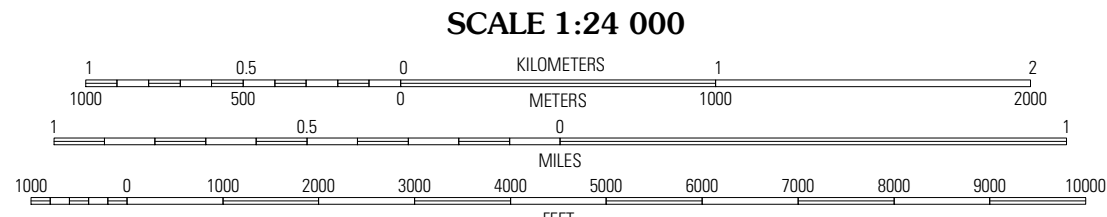


Produced by the United States Geological Survey
North American Datum of 1983 (NAD83)
World Geodetic System of 1984 (WGS84). Projection and
1 000-meter grid: Universal Transverse Mercator, Zone 18T
10 000-foot ticks: New York Coordinate System of 1983
(east zone)

Imagery:.....NAIP, September 2006 - November 2006
Roads:.....US Census Bureau TIGER data
with limited USGS updates, 2006
Names:.....GNS, 2008
Hydrography:.....National Hydrography Dataset, 2006
Contours:.....National Elevation Dataset, 1998

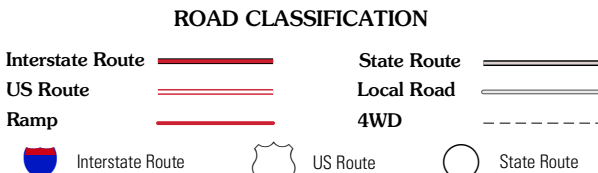
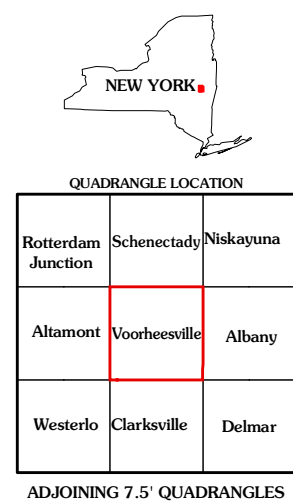


U.S. National Grid
100 000-m Square ID
WN
Grid Zone Designation
18T



CONTOUR INTERVAL 10 FEET

This map was produced to conform with version 0.5.10 of the
draft USGS Standards for 7.5-Minute Quadrangle Maps.
A metadata file associated with this product is also draft version 0.5.10



VOORHEESVILLE, NY
2010