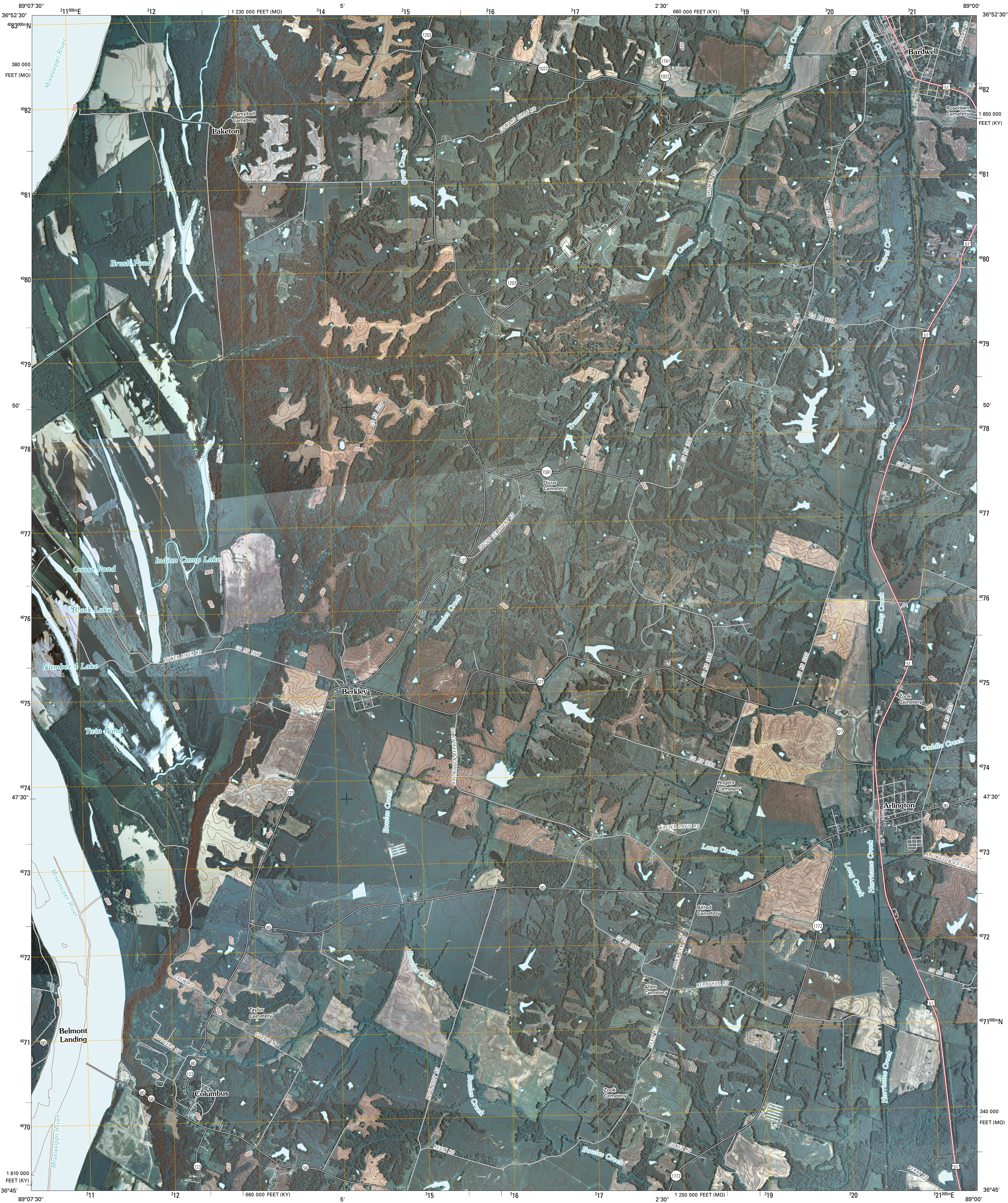




U.S. DEPARTMENT OF THE INTERIOR  
U. S. GEOLOGICAL SURVEY

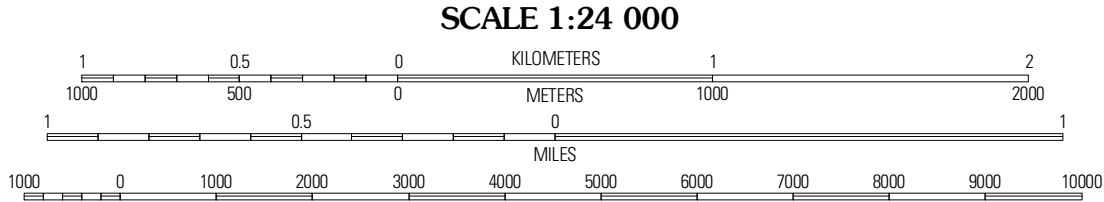
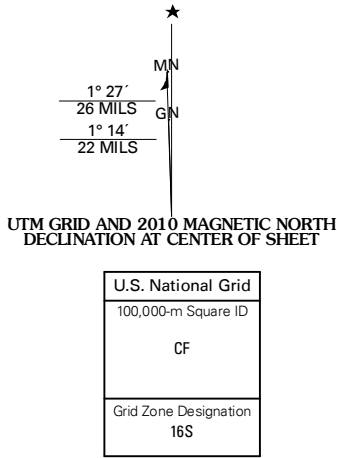


ARLINGTON QUADRANGLE  
KENTUCKY-MISSOURI  
7.5-MINUTE SERIES



Produced by the United States Geological Survey  
North American Datum of 1983 (NAD83)  
World Geodetic System of 1984 (WGS84) Projection and  
1 000-meter grid; Universal Transverse Mercator, Zone 16S  
10 000-foot ticks; Kentucky Coordinate System of 1983  
(south zone) and Missouri Coordinate System of 1983  
(east zone)

Imagery.....NAIP, June 2008  
Roads.....with limited USGS updates, 2004 - 2005  
Names.....GNIS, 2008  
Hydrography.....National Hydrography Dataset, 2008  
Contours.....National Elevation Dataset, 2008



CONTOUR INTERVAL 10 FEET

This map was produced to conform with version 0.5.10 of the  
draft USGS Standards for 7.5-Minute Quadrangle Maps.  
A metadata file associated with this product is also draft version 0.5.10



QUADRANGLE LOCATION		
Wyatt	Wickliffe	Blandville
Wickliffe SW	Arlington	Milburn
Wolf Island	Oakton	Clinton

ROAD CLASSIFICATION  
Interstate Route  
US Route  
Ramp  
State Route  
Local Road  
4WD

ARLINGTON, KY-MO  
2010