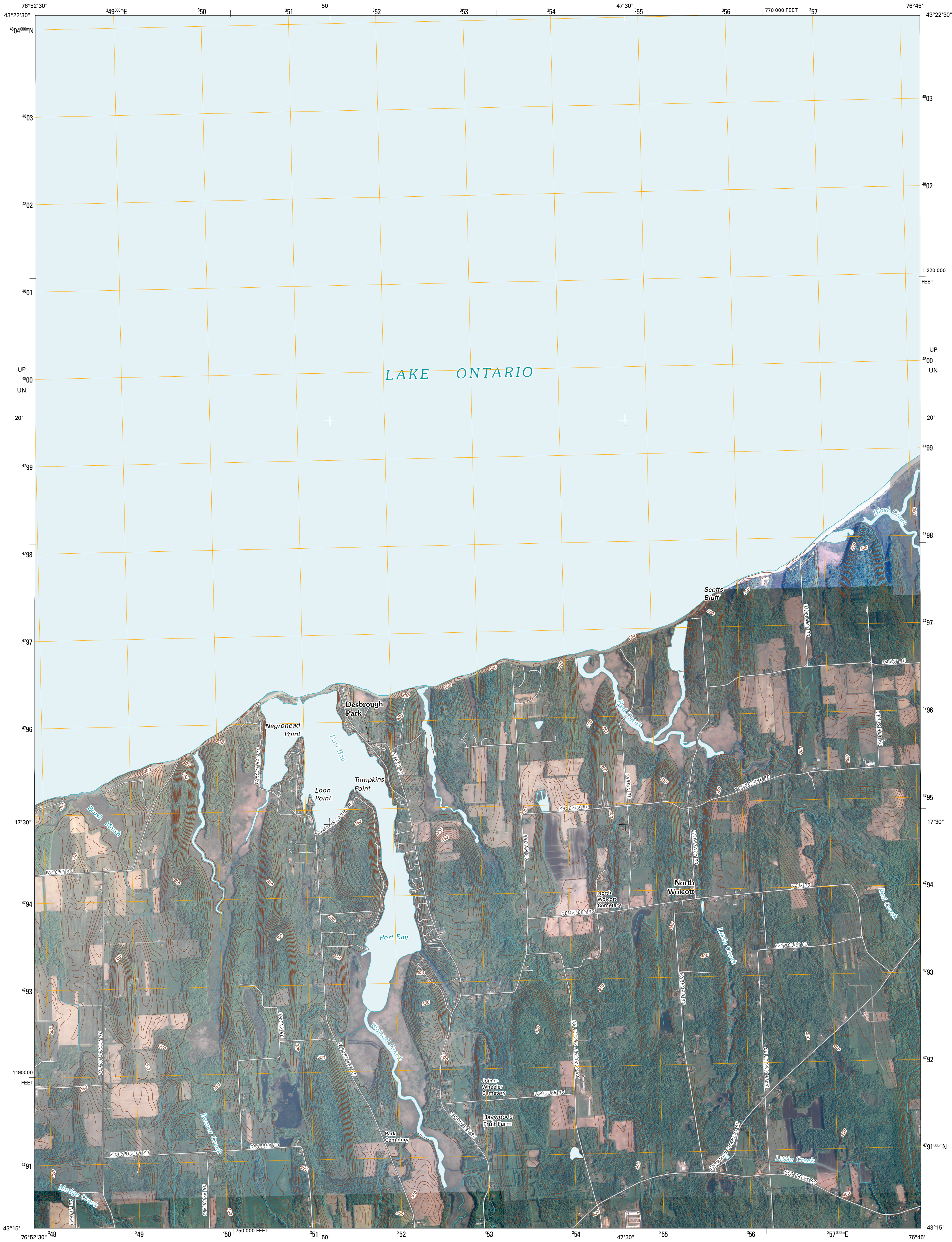




U.S. DEPARTMENT OF THE INTERIOR
U. S. GEOLOGICAL SURVEY



NORTH WOLCOTT QUADRANGLE
NEW YORK
7.5-MINUTE SERIES

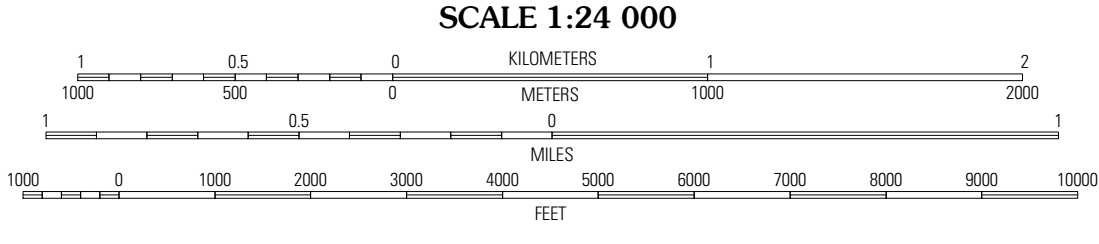


Produced by the United States Geological Survey
North American Datum of 1983 (NAD83)
World Geodetic System of 1984 (WGS84). Projection and
1 000-meter grid: Universal Transverse Mercator, Zone 18T
10 000-foot ticks: New York Coordinate System of 1983
(central zone)

Imagery.....NAIP, May 2008
Roads.....US Census Bureau TIGER data
with limited USGS updates, 2008
Names.....GNIS, 2008
Hydrography.....National Hydrography Dataset, 2008
Contours.....National Elevation Dataset, 2003

UTM GRID AND 2010 MAGNETIC NORTH
DECLINATION AT CENTER OF SHEET

U.S. National Grid
100,000m Square ID
UP
UN
Grid Zone Designation
18T



CONTOUR INTERVAL 10 FEET

This map was produced to conform with version 0.5.10 of the
draft USGS Standards for 7.5-Minute Quadrangle Maps.
A metadata file associated with this product is also draft version 0.5.10



QUADRANGLE LOCATION		
Sodus Point	North Wolcott	Fair Haven
Rose	Wolcott	Victory

ADJOINING 7.5' QUADRANGLES

ROAD CLASSIFICATION

Interstate Route	State Route
US Route	Local Road
Ramp	4WD

Interstate Route US Route State Route

NORTH WOLCOTT, NY
2010