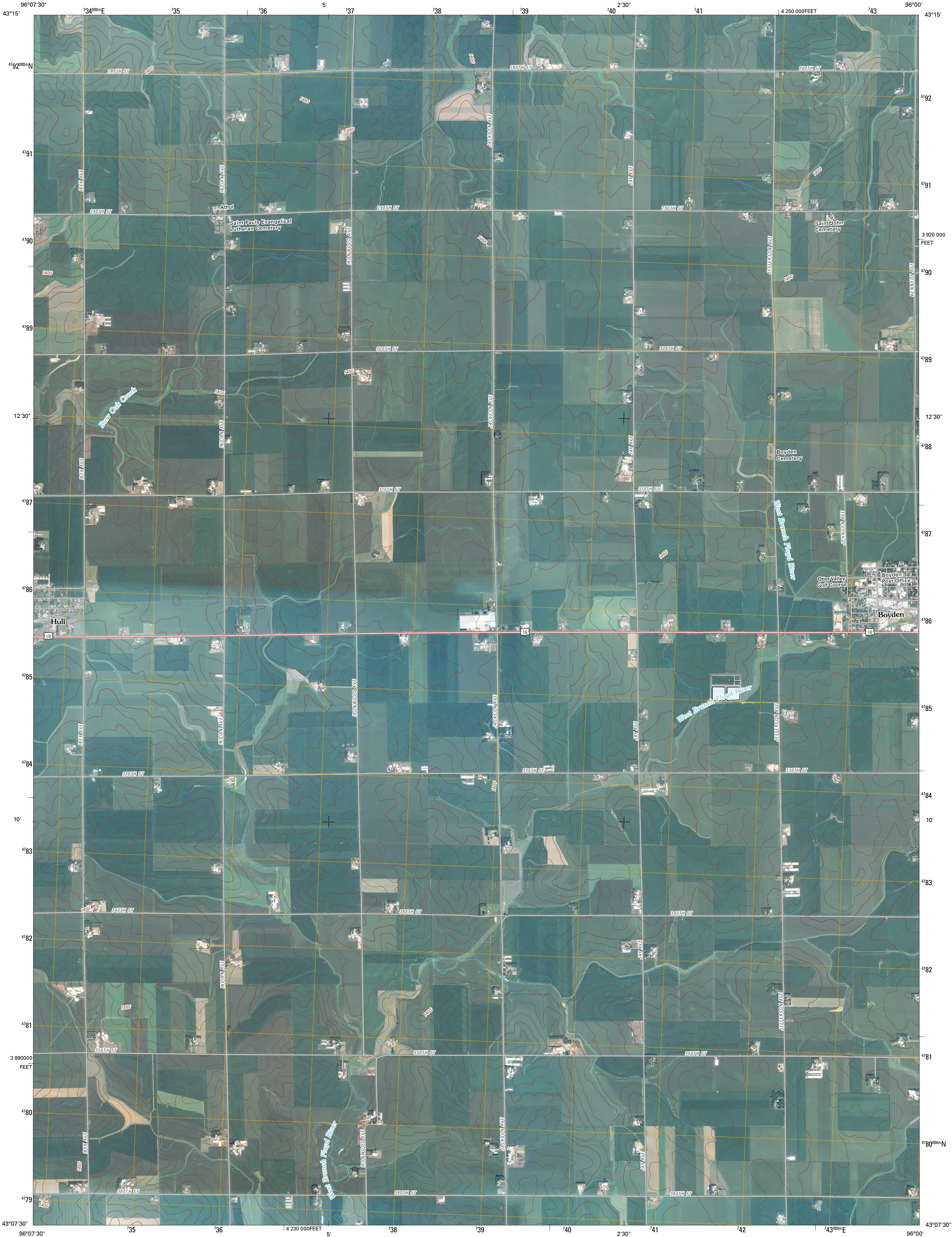




U.S. DEPARTMENT OF THE INTERIOR  
U. S. GEOLOGICAL SURVEY

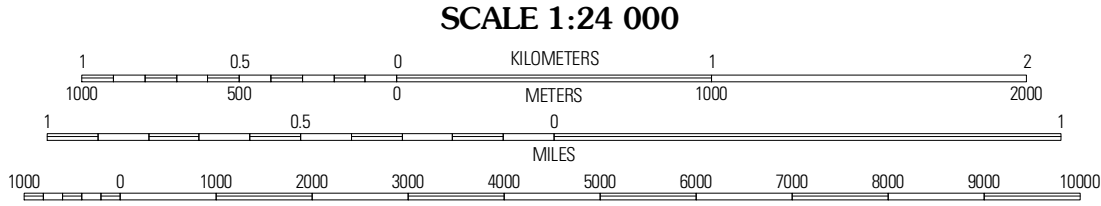
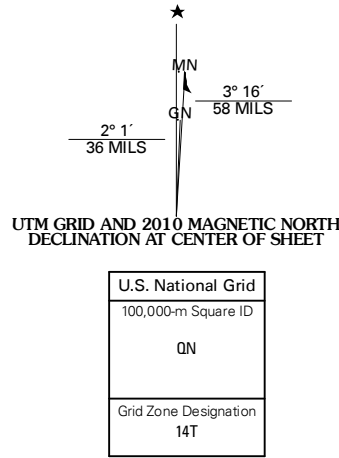


BOYDEN QUADRANGLE  
IOWA  
7.5-MINUTE SERIES



Produced by the United States Geological Survey  
North American Datum of 1983 (NAD83)  
World Geodetic System of 1984 (WGS84), Projection and  
1 000-meter grid; Universal Transverse Mercator, Zone 14T  
10 000-foot ticks; Iowa Coordinate System of 1983  
(north zone)

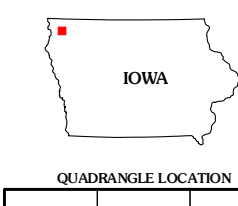
Imagery.....NAIP, September 2006 - October 2006  
Roads.....US Census Bureau TIGER data  
with limited USGS updates, 2008  
Names.....GNIS, 2008  
Hydrography.....National Hydrography Dataset, 2006  
Contours.....National Elevation Dataset, 2006



SCALE 1:24 000

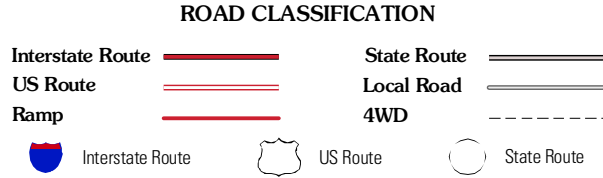
CONTOUR INTERVAL 10 FEET

This map was produced to conform with version 0.5.10 of the  
draft USGS Standards for 7.5-Minute Quadrangle Maps.  
A metadata file associated with this product is also draft version 0.5.10



QUADRANGLE LOCATION		
Doon	George West	George East
Hull	Boyden	Mullock
Stux Center	Orange City	Hoopers

ADJOINING 7.5' QUADRANGLES



BOYDEN, IA  
2010