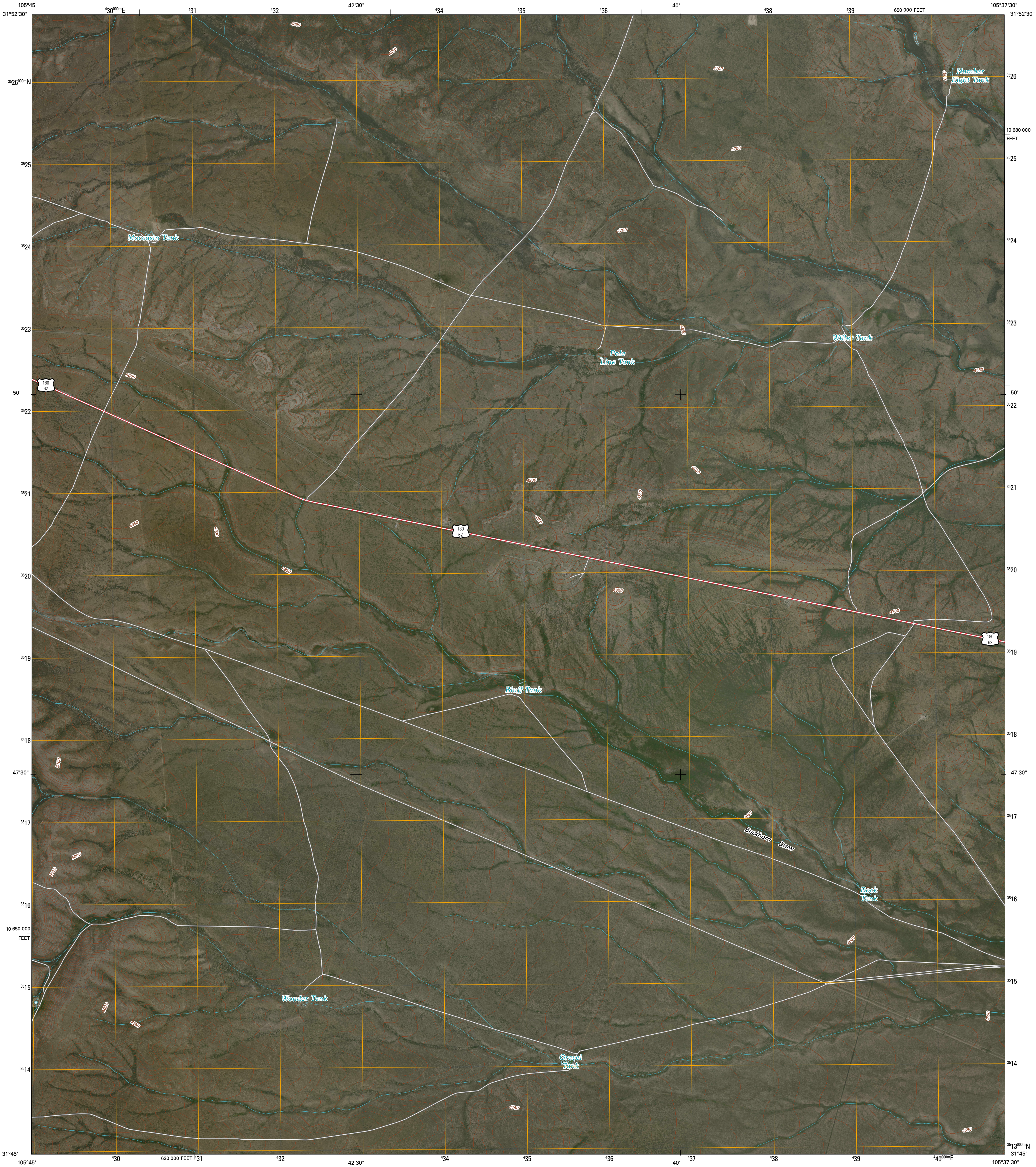




U.S. DEPARTMENT OF THE INTERIOR
U. S. GEOLOGICAL SURVEY

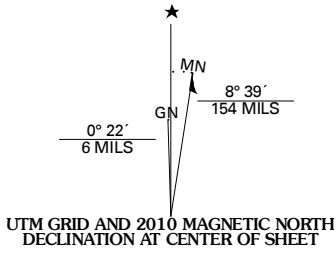


BUCKHORN DRAW EAST QUADRANGLE
TEXAS
7.5-MINUTE SERIES

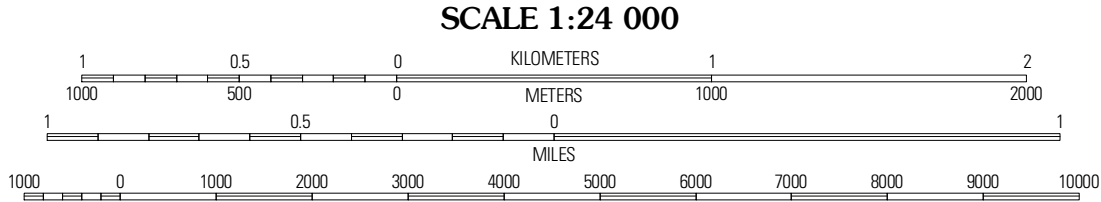


Produced by the United States Geological Survey
North American Datum of 1983 (NAD83)
World Geodetic System of 1984 (WGS84). Projection and
1 000-meter grid: Universal Transverse Mercator, Zone 13R
10 000-foot ticks: Texas Coordinate System of 1983
(central zone)

Imagery.....NAIP, September 2008
Roads.....US Census Bureau TIGER data
with limited USGS updates, 2008
Names.....GNIS, 2008
Hydrography.....National Hydrography Dataset, 1995
Contours.....National Elevation Dataset, 2005



U.S. National Grid
100,000-m Square ID
DR
Grid Zone Designation
13R



SCALE 1:24 000

CONTOUR INTERVAL 10 FEET

This map was produced to conform with version 0.5.10 of the
draft USGS Standards for 7.5-Minute Quadrangle Maps.
A metadata file associated with this product is also draft version 0.5.10



QUADRANGLE LOCATION		
Hobo Tank	Big Heiser Tank	Sixteen Mountains
Buckhorn Draw West	Buckhorn Draw East	Mulesworth Mesa North
Wildhorse Draw	Tepes Butte	Mulesworth Mesa South

ADJOINING 7.5' QUADRANGLES
TX 31105-342

ROAD CLASSIFICATION		
Interstate Route	State Route	Local Road
US Route	4WD	
Ramp		

BUCKHORN DRAW EAST, TX
2010