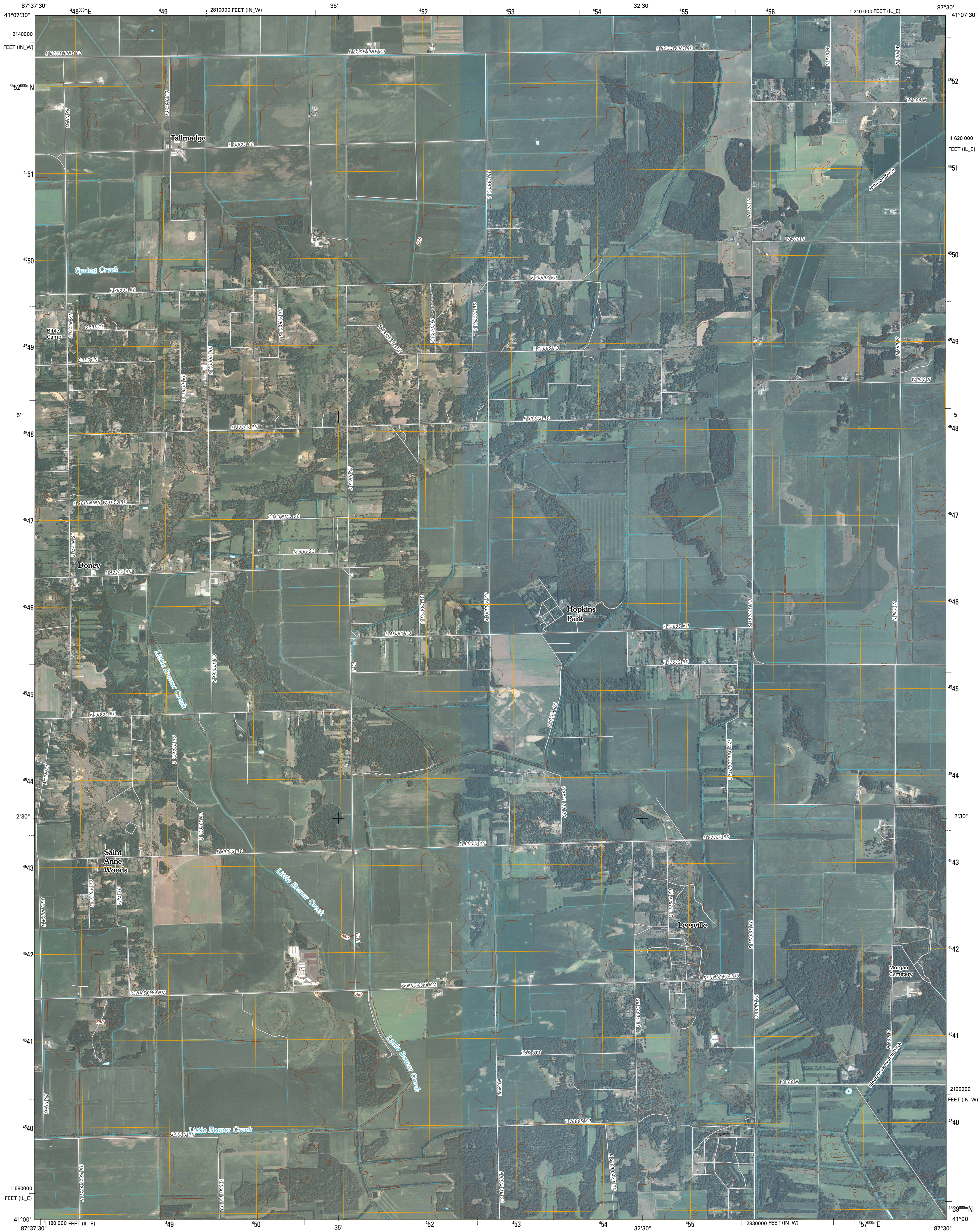




U.S. DEPARTMENT OF THE INTERIOR  
U. S. GEOLOGICAL SURVEY



LEESVILLE QUADRANGLE  
ILLINOIS-INDIANA  
7.5-MINUTE SERIES



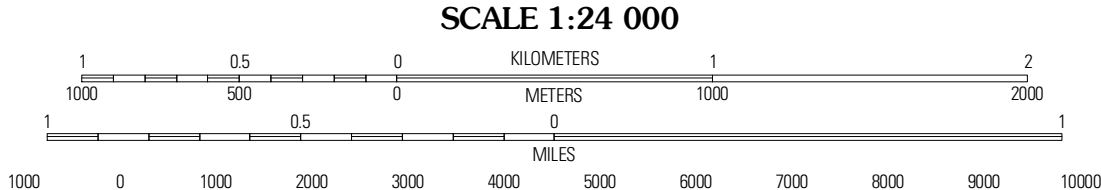
Produced by the United States Geological Survey  
North American Datum of 1983 (NAD83)  
World Geodetic System of 1984 (WGS84) Projection and  
1 000-meter grid: Universal Transverse Mercator, Zone 16T  
10 000-foot ticks: Illinois Coordinate System of 1983  
(east zone)  
and Indiana Coordinate System of 1983  
(west zone)

Imagery.....NAP, July 2007 - August 2008  
Roads.....US Census Bureau TIGER data  
with limited USGS updates, 2005 - 2008  
Names.....GNIS, 2008  
Hydrography.....National Hydrography Dataset, 2007  
Contours.....National Elevation Dataset, 2007

UTM GRID AND 2010 MAGNETIC NORTH  
DECLINATION AT CENTER OF SHEET

2° 20' N  
58 MILS  
0° 22' N  
7 MILS

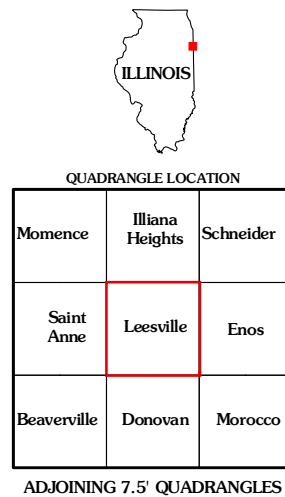
U.S. National Grid  
100,000-m Square ID  
DL  
Grid Zone Designation  
16T



SCALE 1:24 000

CONTOUR INTERVAL 10 FEET

This map was produced to conform with version 0.5.10 of the  
draft USGS Standards for 7.5-Minute Quadrangle Maps.  
A metadata file associated with this product is also draft version 0.5.10



Monroe	Illiana	Schneider
Saint	Leesville	Enos
Anne		
Beaverville	Donovan	Morocco

ADJOINING 7.5' QUADRANGLES

ROAD CLASSIFICATION

Interstate Route  
US Route  
Ramp

State Route  
Local Road  
4WD

Interstate Route  
US Route  
State Route

LEESVILLE, IL-IN  
2010