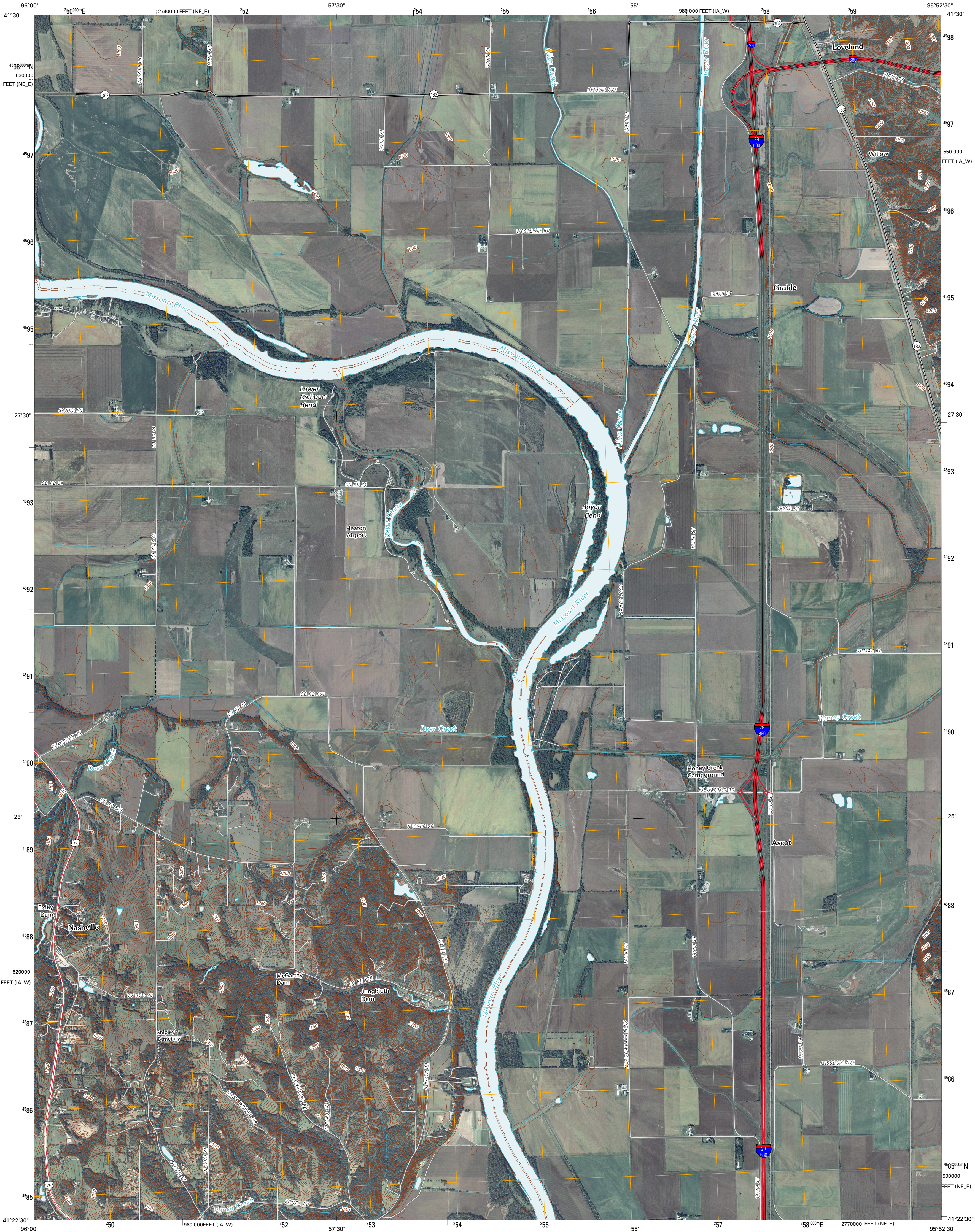




U.S. DEPARTMENT OF THE INTERIOR  
U. S. GEOLOGICAL SURVEY

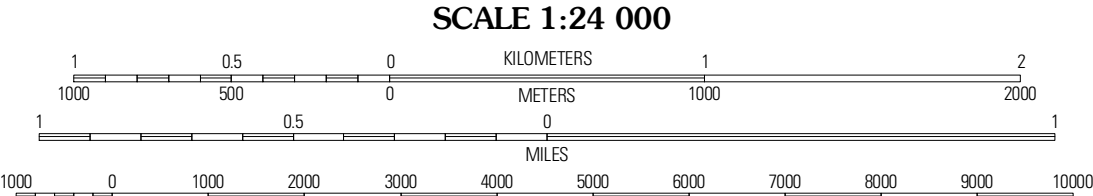
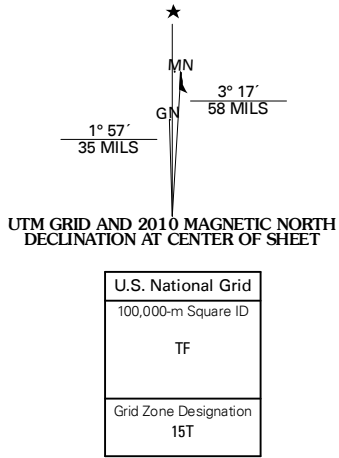


LOVELAND QUADRANGLE  
IOWA-NEBRASKA  
7.5-MINUTE SERIES



Produced by the United States Geological Survey  
North American Datum of 1983 (NAD83)  
World Geodetic System of 1984 (WGS84). Projection and  
10 000-foot ticks: Iowa Coordinate System of 1983  
(south zone) and Nebraska Coordinate System of 1983

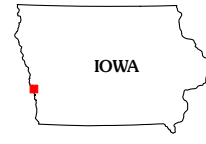
Imagery.....NAIP, September 2006 - July 2009  
Roads.....US Census Bureau TIGER data  
with limited USGS updates, 2004  
Names.....GNIS, 2008  
Hydrography.....National Hydrography Dataset, 2006  
Contours.....National Elevation Dataset, 1999



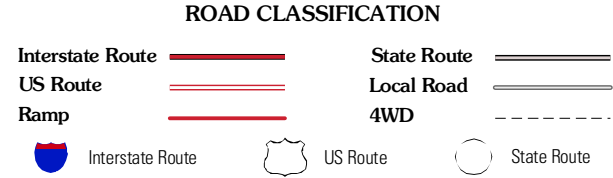
SCALE 1:24 000

CONTOUR INTERVAL 10 FEET

This map was produced to conform with version 0.5.10 of the  
draft USGS Standards for 7.5-Minute Quadrangle Maps.  
A metadata file associated with this product is also draft version 0.5.10



QUADRANGLE LOCATION		
Madison	Missouri Valley	Beebeetown
Fort Calhoun	Loveland	Honey Creek
Irvington	Omaha North	Council Bluffs North



LOVELAND, IA-NE  
2010