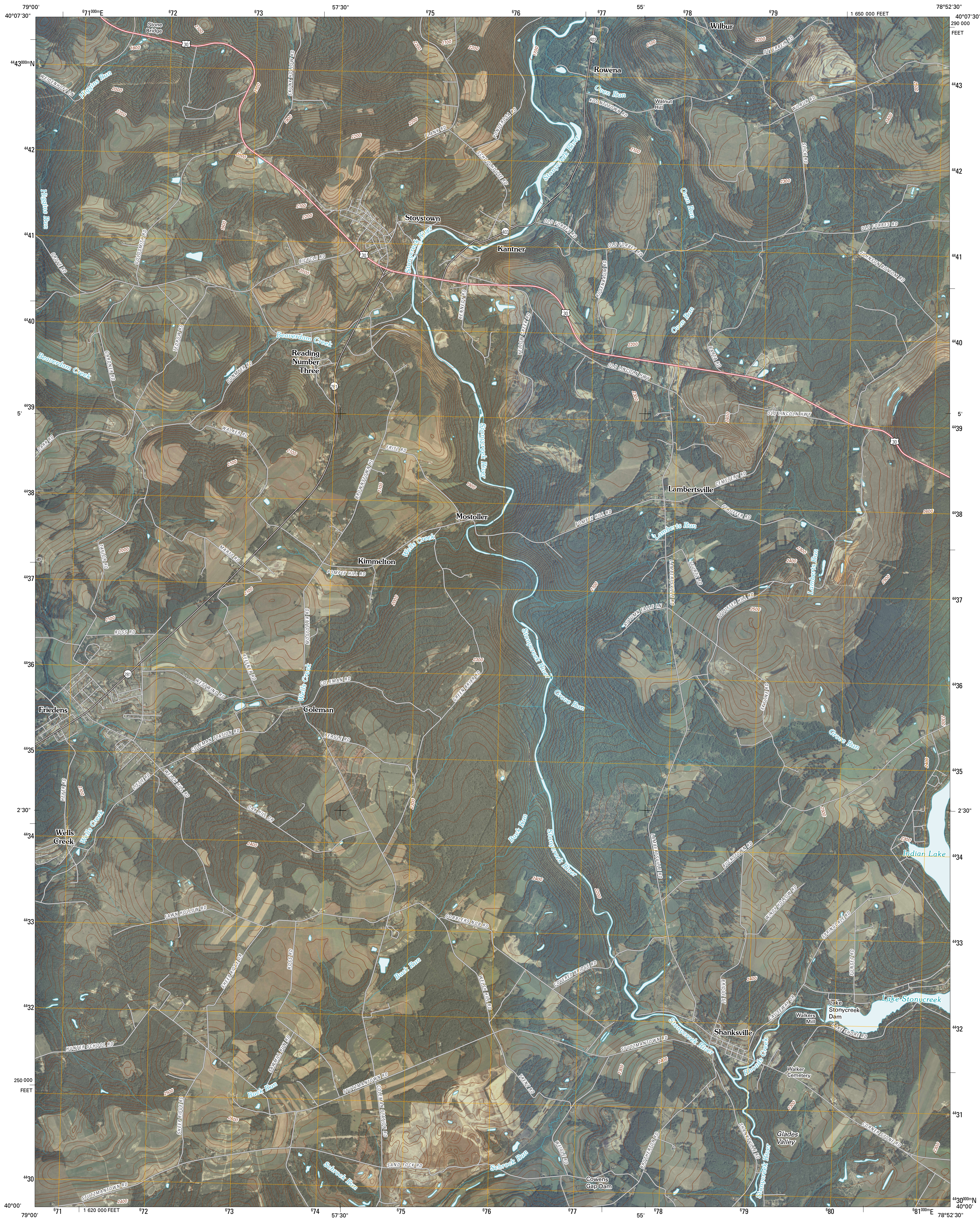




U.S. DEPARTMENT OF THE INTERIOR
U. S. GEOLOGICAL SURVEY

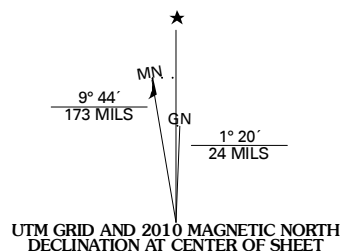


STOYSTOWN QUADRANGLE
PENNSYLVANIA
7.5-MINUTE SERIES

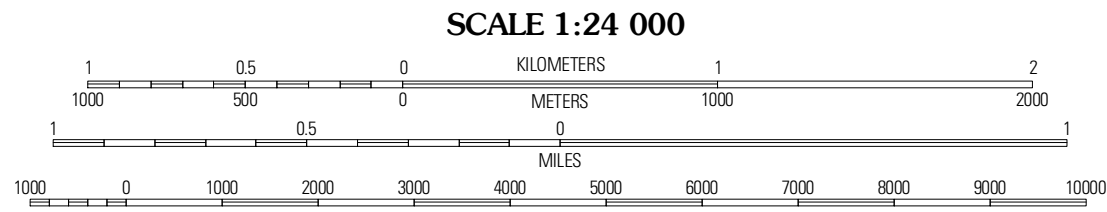


Produced by the United States Geological Survey
North American Datum of 1983 (NAD83)
World Geodetic System of 1984 (WGS84). Projection and
1 000-meter grid: Universal Transverse Mercator, Zone 17T
10 000-foot ticks: Pennsylvania Coordinate System of 1983
(south zone)

Imagery.....NAIP, August 2008
Roads.....2006-2010 T4e Atlas
Names.....GNIS, 2008
Hydrography.....National Hydrography Dataset, 2008
Contours.....National Elevation Dataset, 1999

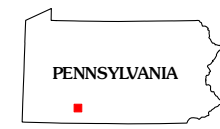


U.S. National Grid
100,000m Square ID
PE
Grid Zone Designation
17T



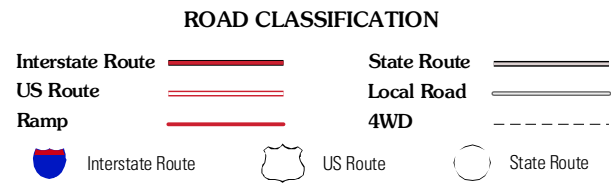
CONTOUR INTERVAL 20 FEET
NORTH AMERICAN VERTICAL DATUM OF 1988

This map was produced to conform with version 0.5.10 of the
draft USGS Standards for 7.5-Minute Quadrangle Maps.
A metadata file associated with this product is draft version 0.5.11



Boswell	Hooversville	Windber
Somerset	Stoystown	Central City
Murdock	Berlin	New Baltimore

ADJOINING 7.5 QUADRANGLES



STOYSTOWN, PA
2010