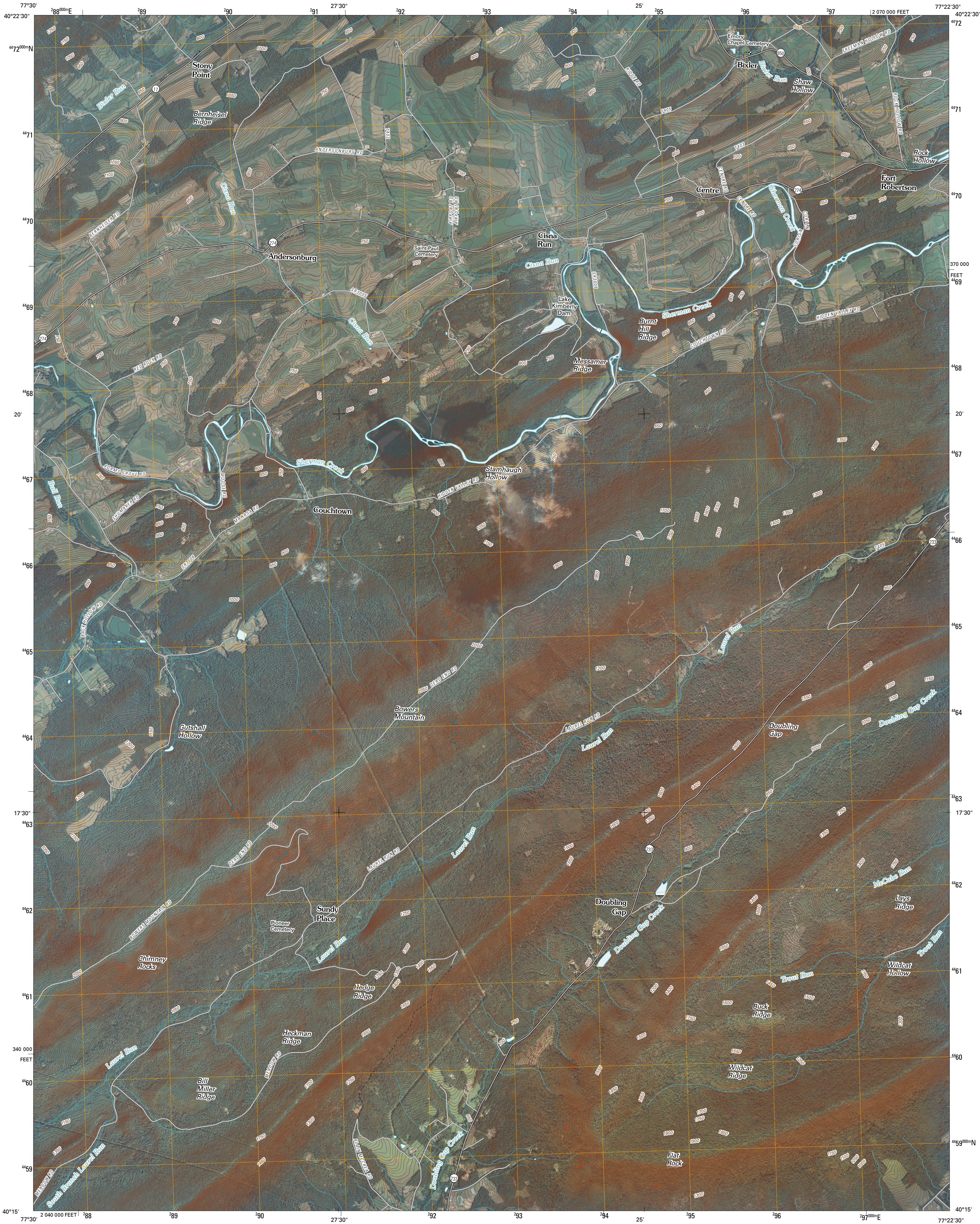




U.S. DEPARTMENT OF THE INTERIOR
U. S. GEOLOGICAL SURVEY

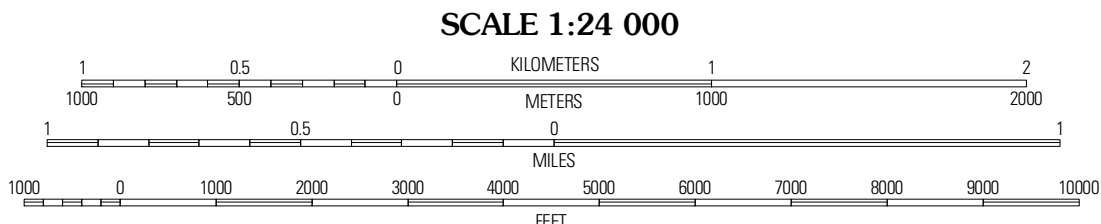
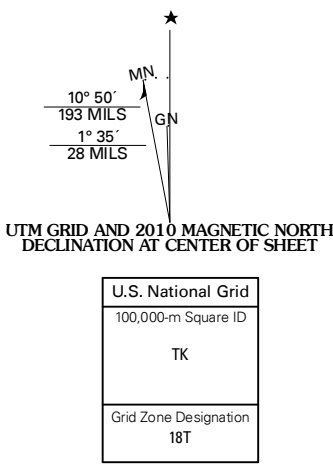


ANDERSONBURG QUADRANGLE
PENNSYLVANIA
7.5-MINUTE SERIES

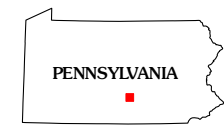


Produced by the United States Geological Survey
North American Datum of 1983 (NAD83)
World Geodetic System of 1984 (WGS84). Projection and
1 000-meter grid: Universal Transverse Mercator, Zone 18T
10 000-foot ticks: Pennsylvania Coordinate System of 1983
(south zone)

Imagery.....NAIP, August 2008 - October 2008
Roads.....©2006-2010 Tele Atlas
Names.....GNIS, 2008
Hydrography.....National Hydrography Dataset, 2008
Contours.....National Elevation Dataset, 2000

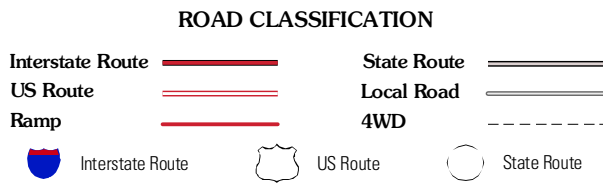


CONTOUR INTERVAL 10 FEET
NORTH AMERICAN VERTICAL DATUM OF 1988
This map was produced to conform with version 0.5.10 of the
draft USGS Standards for 7.5-Minute Quadrangle Maps.
A metadata file associated with this product is draft version 0.5.11



QUADRANGLE LOCATION		
McCoyville	Spruce Hill	Ickesburg
Blain	Andersonburg	Landsburg
Newburg	Newville	Plainfield

ADJOINING 7.5' QUADRANGLES



ANDERSONBURG, PA
2010