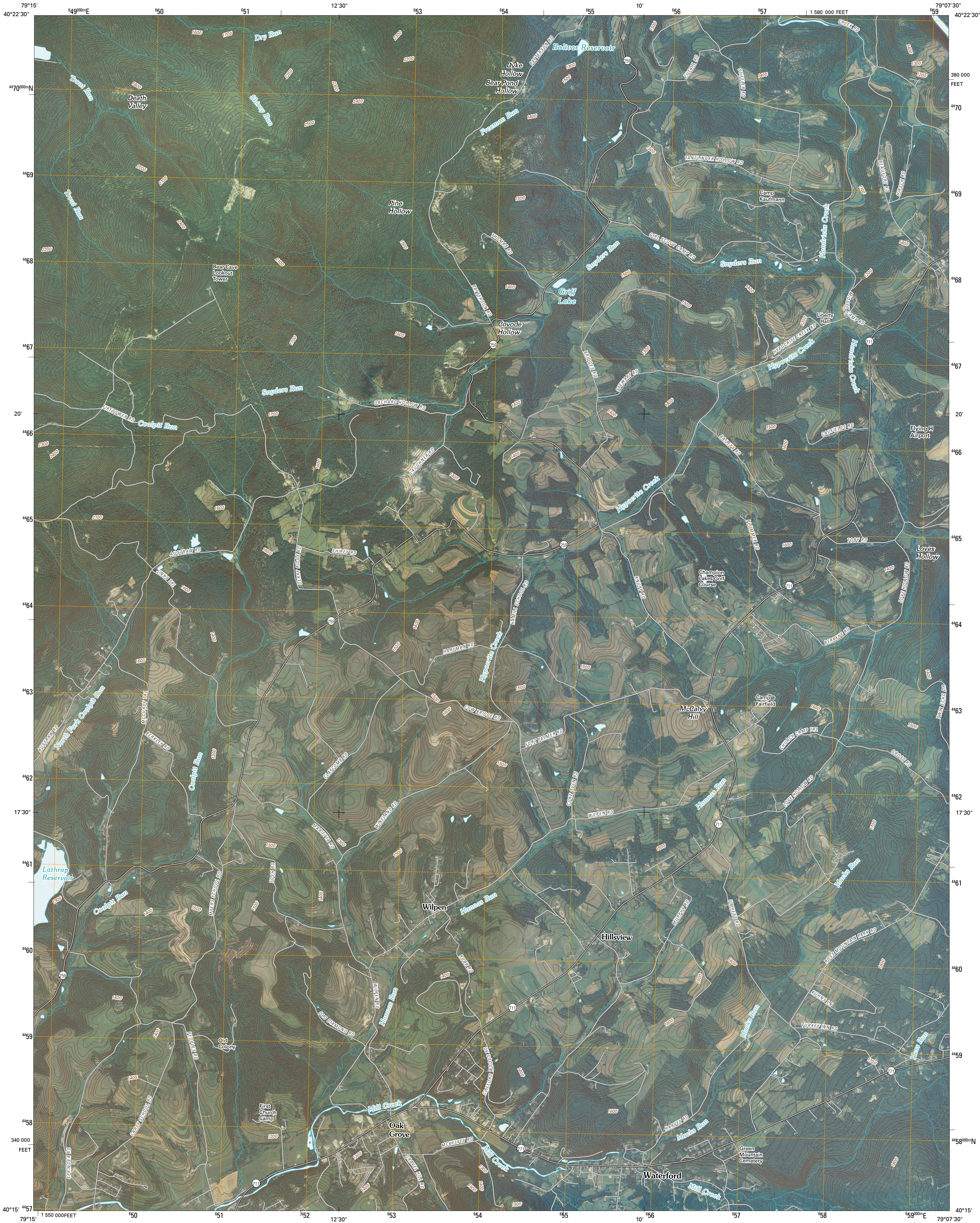




U.S. DEPARTMENT OF THE INTERIOR
U. S. GEOLOGICAL SURVEY

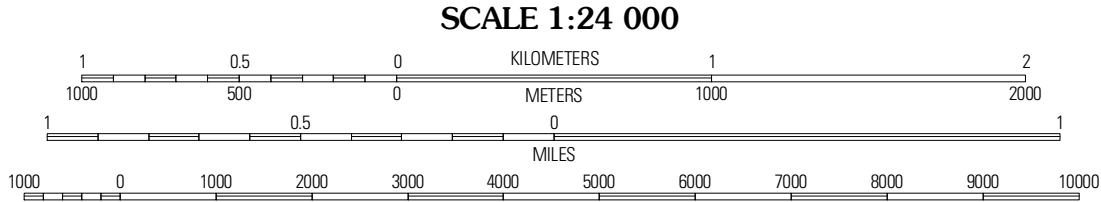
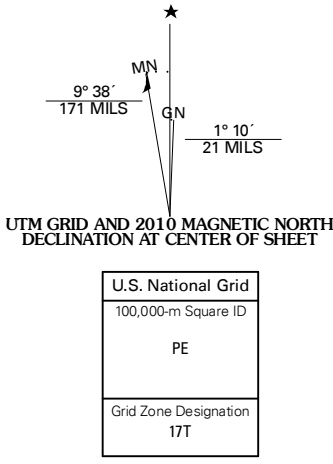


WILPEN QUADRANGLE
PENNSYLVANIA
7.5-MINUTE SERIES



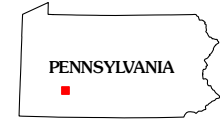
Produced by the United States Geological Survey
North American Datum of 1983 (NAD83)
World Geodetic System of 1984 (WGS84), Projection and
1 000-meter grid: Universal Transverse Mercator, Zone 17T
10 000-foot ticks: Pennsylvania Coordinate System of 1983
(south zone)

Imagery.....NAIP, July 2008 - August 2008
Roads.....©2006-2010 Tele Atlas
Names.....©2006-2010 Tele Atlas
Hydrography.....National Hydrography Dataset, 2008
Contours.....National Elevation Dataset, 2000



CONTOUR INTERVAL 20 FEET
NORTH AMERICAN VERTICAL DATUM OF 1988

This map was produced to conform with version 0.5.10 of the
draft USGS Standards for 7.5-Minute Quadrangle Maps.
A metadata file associated with this product is draft version 0.5.11



QUADRANGLE LOCATION		
Blairsville	Bolivar	New Florence
Derry	Wilpen	Eschewood
Stahstown	Ligonier	Boswell

ROAD CLASSIFICATION

Interstate Route	State Route
US Route	Local Road
Ramp	4WD

Legend: Interstate Route (blue shield), US Route (white shield), State Route (black shield), Local Road (black line), 4WD (dashed line), State Route (dashed line)

WILPEN, PA
2010