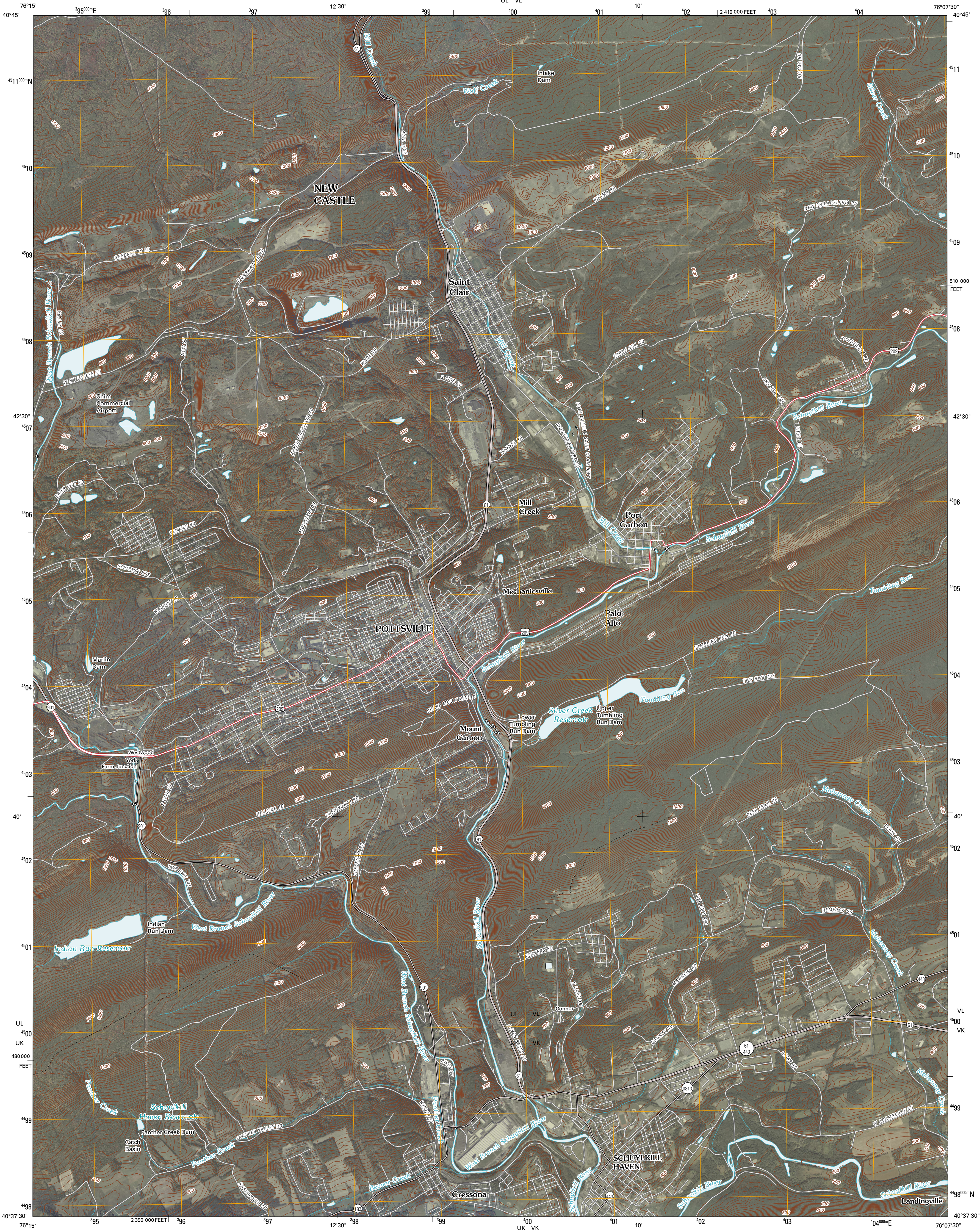




U.S. DEPARTMENT OF THE INTERIOR
U. S. GEOLOGICAL SURVEY



POTTSVILLE QUADRANGLE
PENNSYLVANIA
7.5-MINUTE SERIES



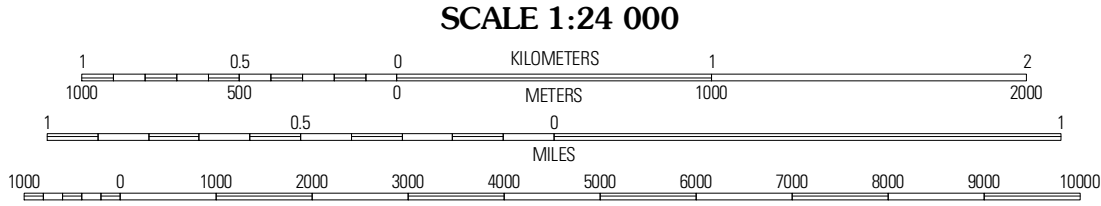
Produced by the United States Geological Survey
North American Datum of 1983 (NAD83)
World Geodetic System of 1984 (WGS84). Projection and
1 000-meter grid: Universal Transverse Mercator, Zone 18T
10 000-foot ticks: Pennsylvania Coordinate System of 1983
(south zone)

Imagery:.....NAIP, September 2008 - October 2008
Roads:.....©2006-2010 Tele Atlas
Names:.....GNIS, 2008
Hydrography:.....National Hydrography Dataset, 2008
Contours:.....National Elevation Dataset, 2002

UTM GRID AND 2010 MAGNETIC NORTH
DECLINATION AT CENTER OF SHEET

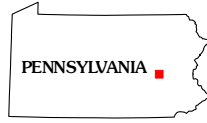
MN
11° 45'
259 MILS
0° 46'
14 MILS

U.S. National Grid
100,000m Square ID
UL VL
UK VK
Grid Zone Designation
18T



CONTOUR INTERVAL 20 FEET
NORTH AMERICAN VERTICAL DATUM OF 1988

This map was produced to conform with version 0.5.10 of the
draft USGS Standards for 7.5-Minute Quadrangle Maps.
A metadata file associated with this product is draft version 0.5.11



Ashland	Shenandoah	Delano
Minersville	Pottsville	Orwigsburg
Scranton	Friedensburg	Auburn

ADJOINING 7.5' QUADRANGLES

ROAD CLASSIFICATION

Interstate Route
US Route
Ramp

State Route
Local Road
4WD

Interstate Route
US Route
State Route

POTTSVILLE, PA
2010