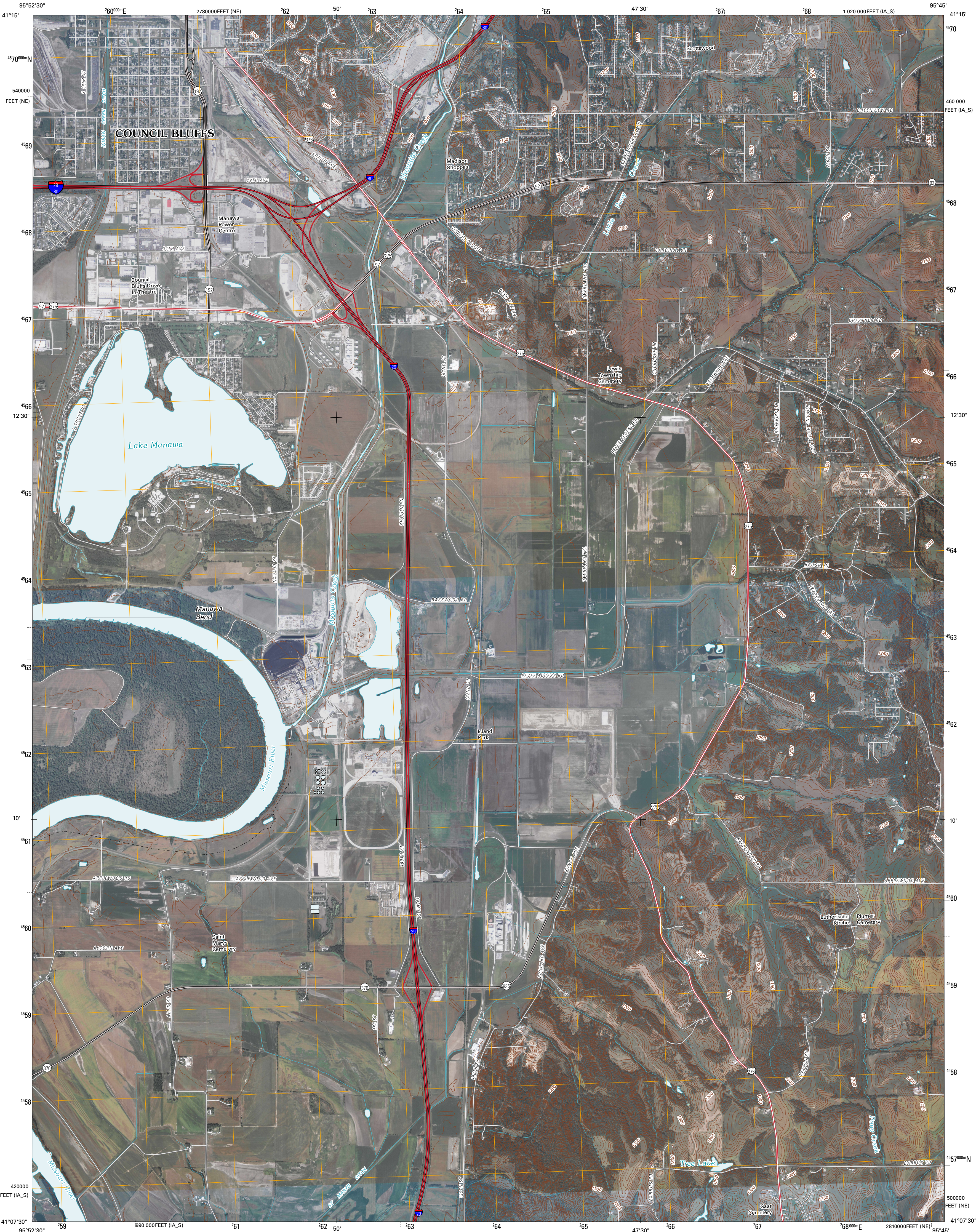




U.S. DEPARTMENT OF THE INTERIOR
U. S. GEOLOGICAL SURVEY

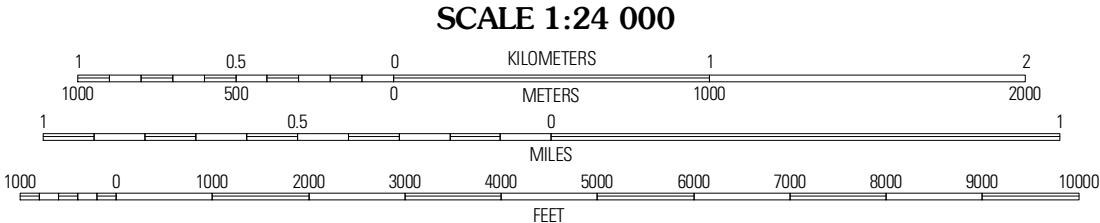
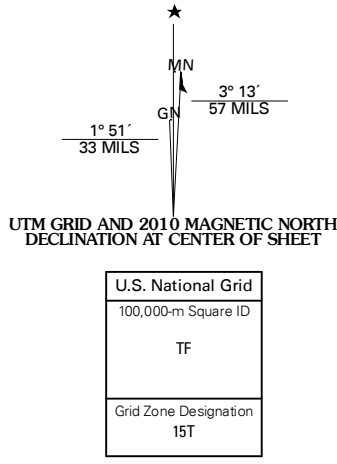


COUNCIL BLUFFS SOUTH QUADRANGLE
IOWA-NEBRASKA
7.5-MINUTE SERIES



Produced by the United States Geological Survey
North American Datum of 1983 (NAD83)
World Geodetic System of 1984 (WGS84). Projection and
1 000-meter grid: Universal Transverse Mercator, Zone 15T
10 000-foot ticks: Iowa Coordinate System of 1983
(south zone) and Nebraska Coordinate System of 1983

Imagery.....NAIP, July 2009
Roads.....US Census Bureau TIGER data
with limited USGS updates, 2004 - 2005
Names.....GNIS, 2008
Hydrography.....National Hydrography Dataset, 2009
Contours.....National Elevation Dataset, 1999



CONTOUR INTERVAL 10 FEET
NORTH AMERICAN VERTICAL DATUM OF 1988

This map was produced to conform with version 0.5.10 of the
draft USGS Standards for 7.5-Minute Quadrangle Maps.
A metadata file associated with this product is also draft version 0.5.10



QUADRANGLE LOCATION		
Omaha North	Council Bluffs North	McClelland
Omaha South	Council Bluffs South	Minneka
Plattsmouth	Pacific Junction	Glenwood

ROAD CLASSIFICATION
Interstate Route
US Route
Ramp
State Route
Local Road
4WD

COUNCIL BLUFFS SOUTH, IA-NE
2010