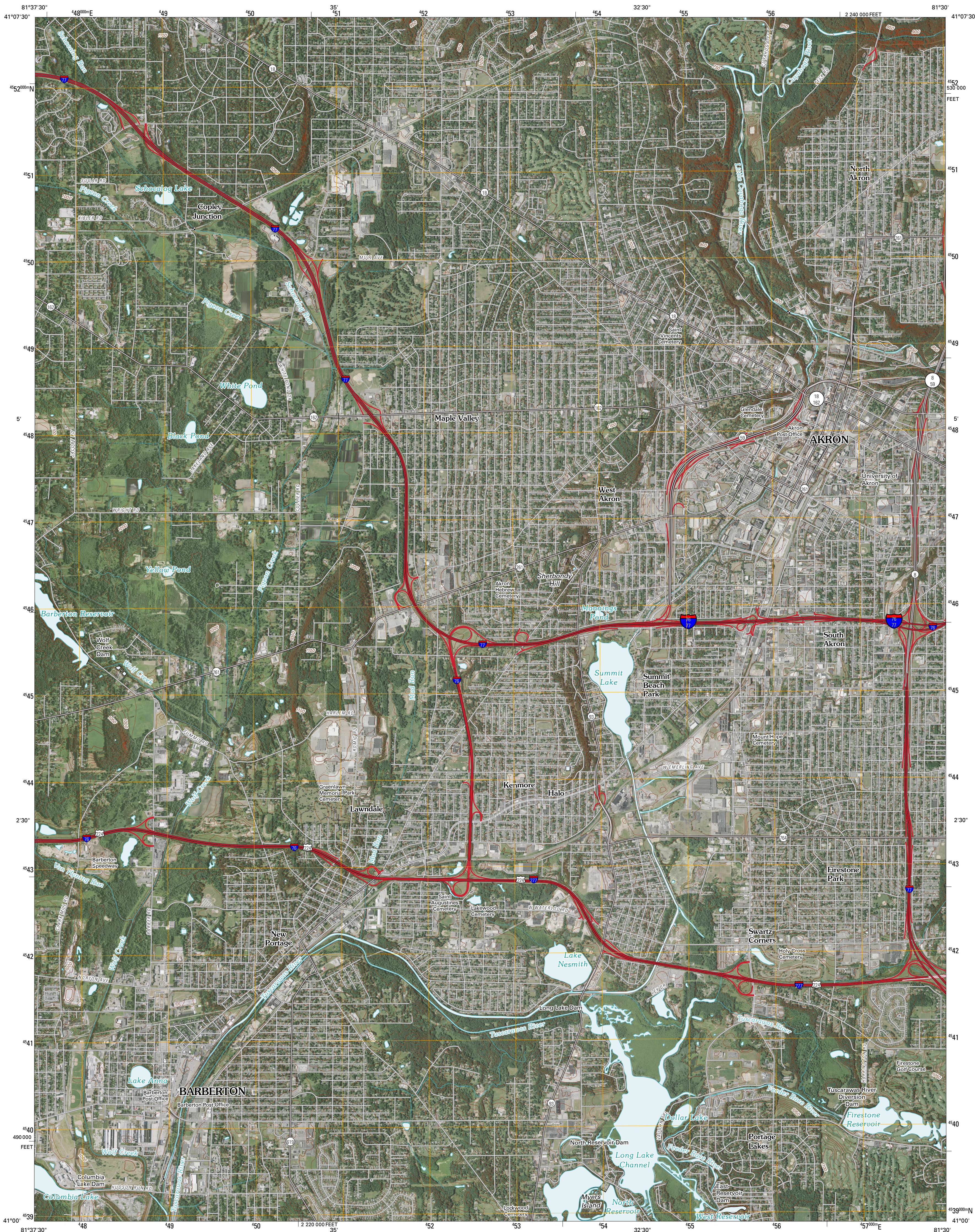




U.S. DEPARTMENT OF THE INTERIOR
U. S. GEOLOGICAL SURVEY



AKRON WEST QUADRANGLE
OHIO
7.5-MINUTE SERIES



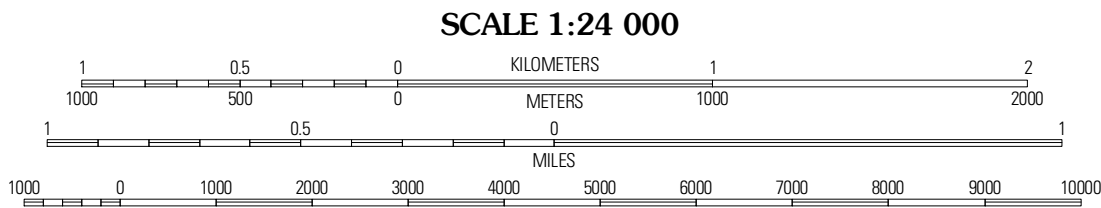
Produced by the United States Geological Survey
North American Datum of 1983 (NAD83)
World Geodetic System of 1984 (WGS84) Projection and
1 000-meter grid; Universal Transverse Mercator, Zone 17T
10 000-foot ticks: Ohio Coordinate System of 1983
(north zone)

Imagery.....NAIP, June 2004 - September 2004
Roads.....©2006-2010 Tele Atlas
Names.....GNIS, 2008
Hydrography.....National Hydrography Dataset, 2004
Contours.....National Elevation Dataset, 2004

UTM GRID AND 2010 MAGNETIC NORTH
DECLINATION AT CENTER OF SHEET

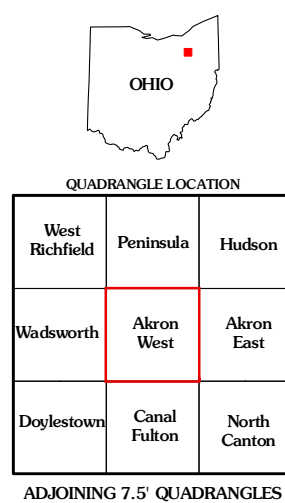
8° E
144 MILS
0° 22'
7 MILS

U.S. National Grid
100,000-m-Square ID
MF
Grid Zone Designation
17T



CONTOUR INTERVAL 10 FEET
NORTH AMERICAN VERTICAL DATUM OF 1988

This map was produced to conform with version 0.5.10 of the
draft USGS Standards for 7.5-Minute Quadrangle Maps.
A metadata file associated with this product is draft version 0.5.11



ROAD CLASSIFICATION

Interstate Route
US Route
Ramp

State Route
Local Road
4WD

AKRON WEST, OH
2010