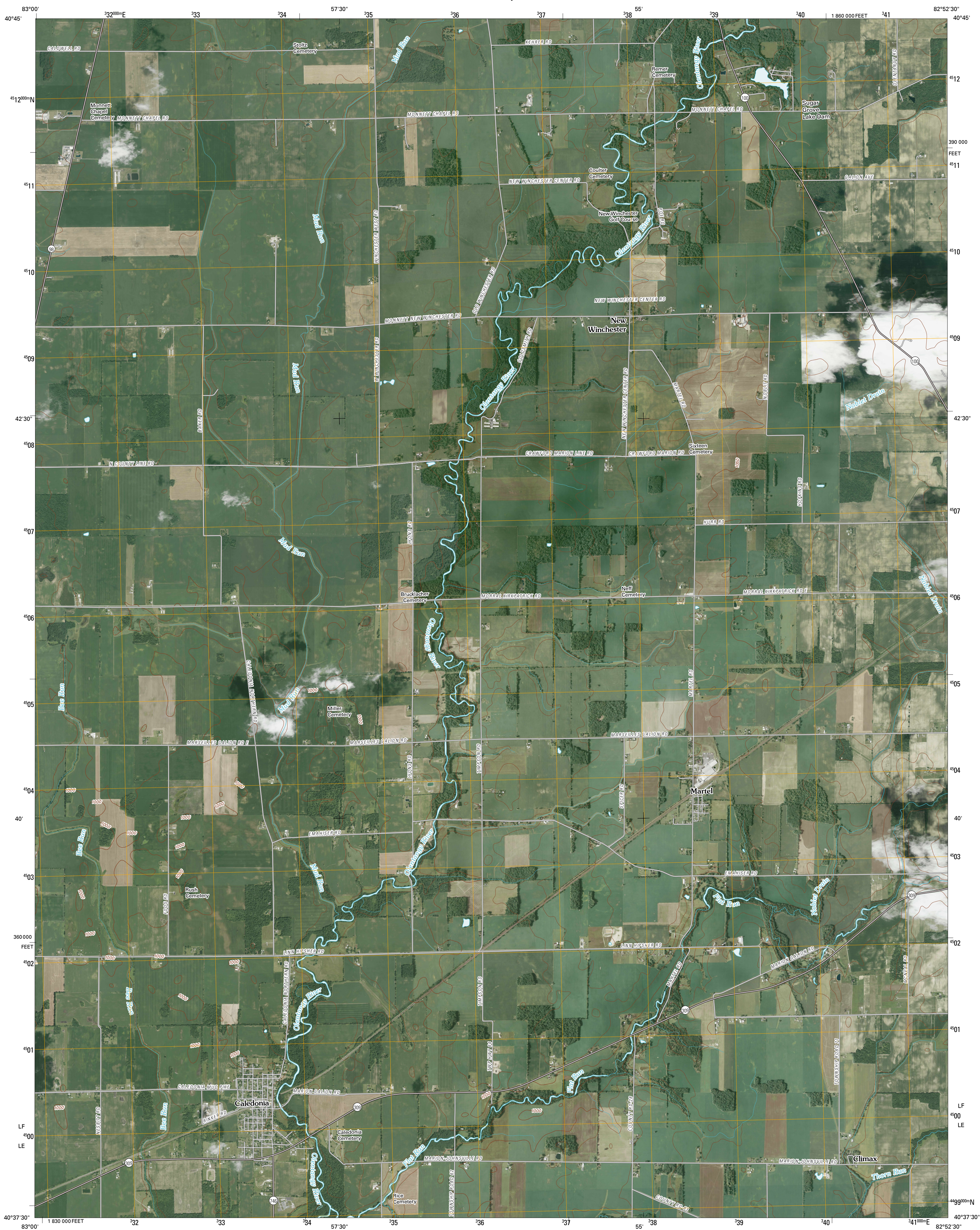




U.S. DEPARTMENT OF THE INTERIOR
U. S. GEOLOGICAL SURVEY



CALEDONIA QUADRANGLE
OHIO
7.5-MINUTE SERIES



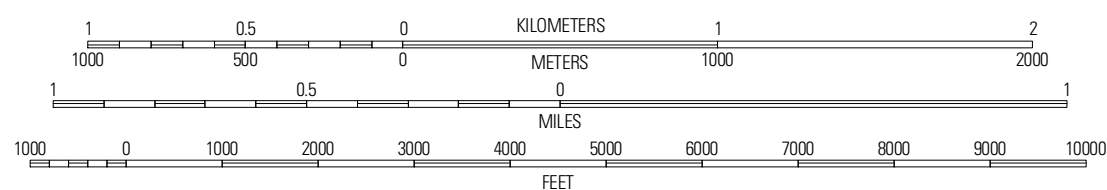
Produced by the United States Geological Survey
North American Datum of 1983 (NAD83)
World Geodetic System of 1984 (WGS84). Projection and
1 000-meter grid: Universal Transverse Mercator, Zone 17T
10 000-foot ticks: Ohio Coordinate System of 1983
(north zone)

Imagery.....	NAIP, June 2004
Roads.....	©2006-2010 Tele Atlas
Names.....	GNIS, 2008
Hydrography.....	National Hydrography Dataset, 2004
Contours.....	National Elevation Dataset, 2004

UTM GRID AND 2010 MAGNETIC NORTH

U.S. National Grid
100,000-m Square ID
$\frac{LF}{LE} \leq 00$
Grid Zone Designation
17T

SCALE 1:24 000



CONTOUR INTERVAL 10 FEET
NORTH AMERICAN VERTICAL DATUM OF 1988





This map was produced to conform with version 0.5.10 of the draft USGS Standards for 7.5-Minute Quadrangle Maps. A metadata file associated with this product is draft version 0.5.11






QUADRANGLE LOCATION		
Oceola	Bucyrus	North Robinson
Monnett	Caledonia	Galion
Marion East	Denmark	Mount Glead

ADJOINING 7.5' QUADRANGLES

ROAD CLASSIFICATION

Interstate Route		State Route	
US Route		Local Road	
Ramp		4WD	

	Interstate Route		US Route		State Route
---	------------------	---	----------	---	-------------

CALEDONIA, OH
2010