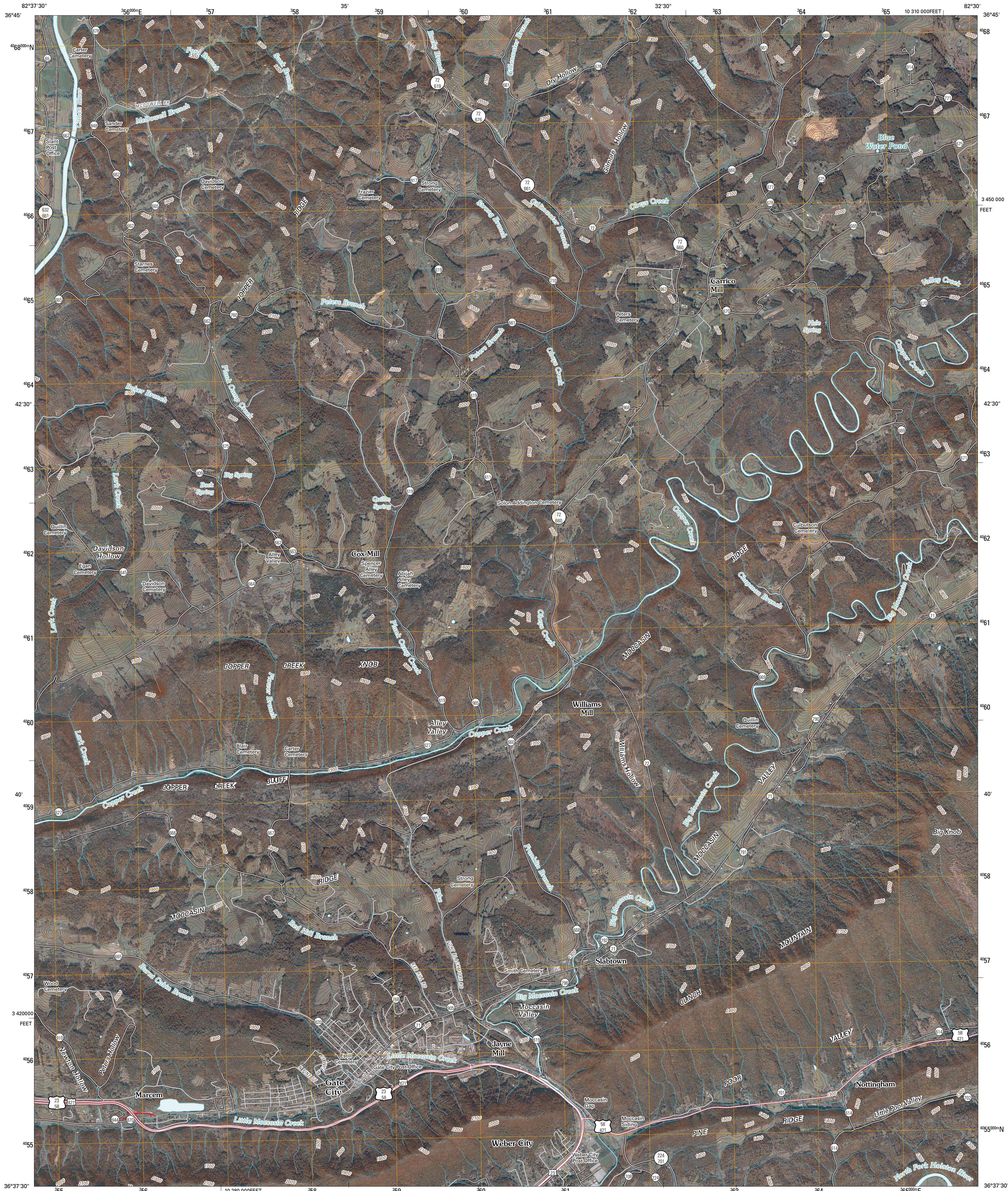




U.S. DEPARTMENT OF THE INTERIOR
U. S. GEOLOGICAL SURVEY



GATE CITY QUADRANGLE
VIRGINIA
7.5-MINUTE SERIES

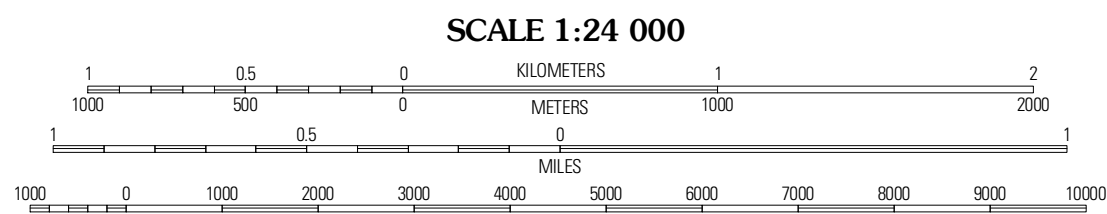


Produced by the United States Geological Survey
North American Datum of 1983 (NAD83)
World Geodetic System of 1984 (WGS84). Projection and
1 000-foot ticks: Universal Transverse Mercator, Zone 17S
10 000-foot ticks: Virginia Coordinate System of 1983
(south zone)

Imagery.....NAP, October 2009
Roads.....©2006-2010 Tide Atlas
Names.....GNIS, 2008
Hydrography.....National Hydrography Dataset, 2009
Contours.....National Elevation Dataset, 1999

UTM GRID AND 2010 MAGNETIC NORTH
DECLINATION AT CENTER OF SHEET

U.S. National Grid
100,000m Square ID
1A
Grid Zone Designation
17S



CONTOUR INTERVAL 20 FEET
NORTH AMERICAN VERTICAL DATUM OF 1988

This map was produced to conform with version 0.5.10 of the
draft USGS Standards for 7.5-Minute Quadrangle Maps.
A metadata file associated with this product is draft version 0.5.11



| QUADRANGLE LOCATION | | |
|---------------------|----------------|----------------|
| East Stone Gap | Fort Blackmore | Dungannon |
| Clinchport | Gate City | Hiltons |
| Church Hill | Kingsport | Indian Springs |

ROAD CLASSIFICATION

| | |
|------------------|-------------|
| Interstate Route | State Route |
| US Route | Local Road |
| Ramp | 4WD |

Interstate Route US Route State Route

GATE CITY, VA
2010