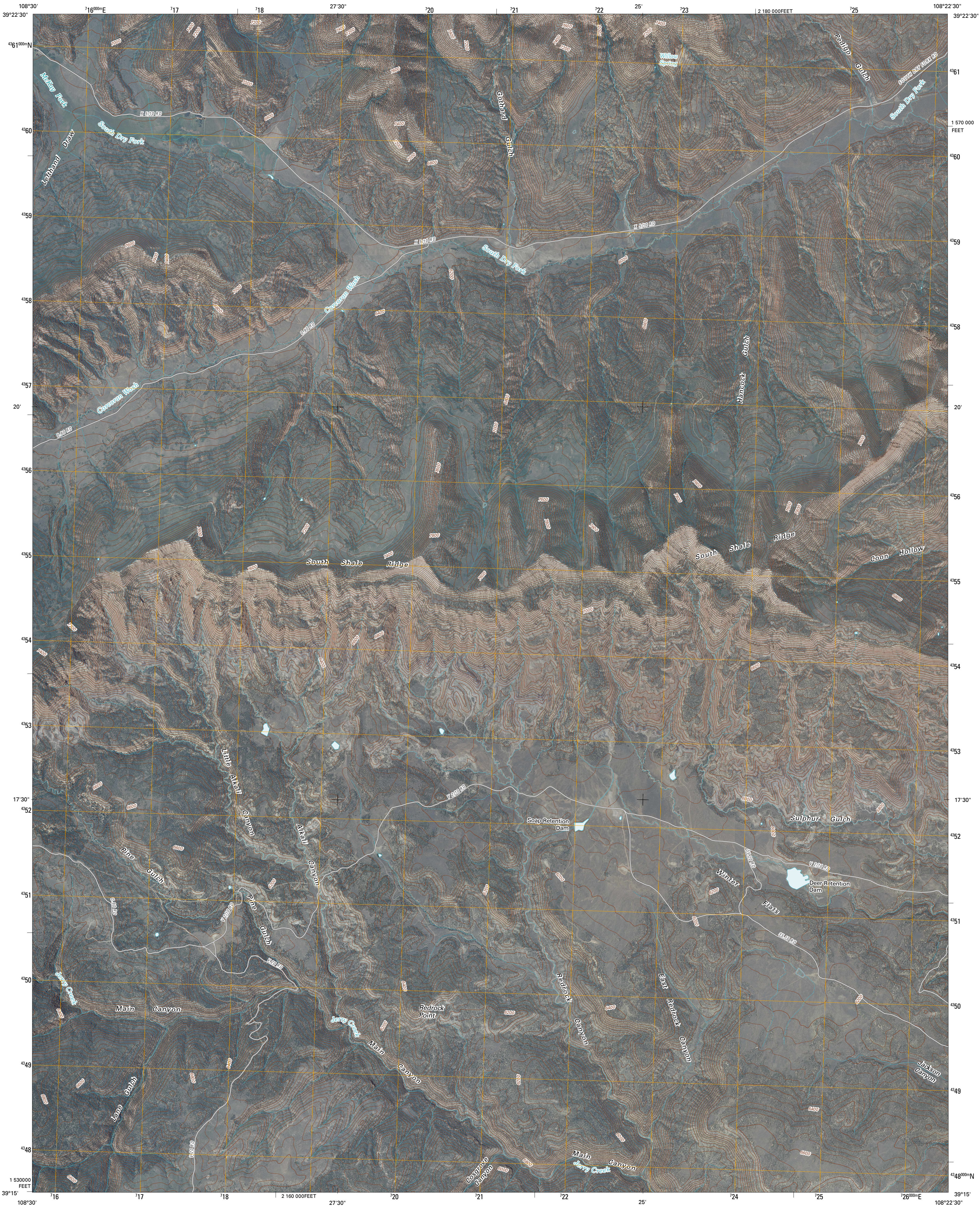




U.S. DEPARTMENT OF THE INTERIOR  
U. S. GEOLOGICAL SURVEY

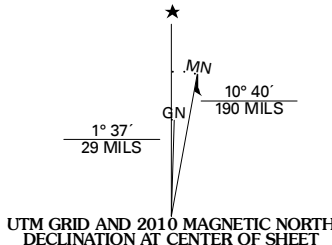


WINTER FLATS QUADRANGLE  
COLORADO  
7.5-MINUTE SERIES

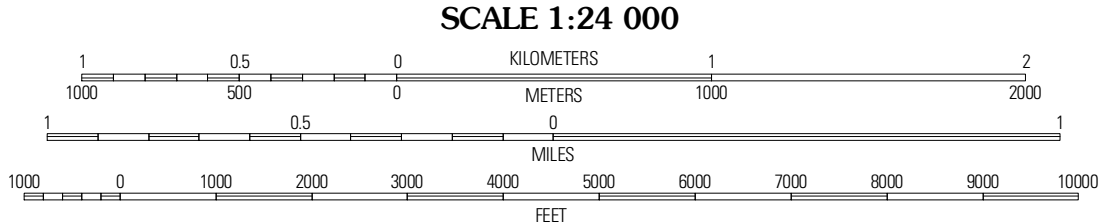


Produced by the United States Geological Survey  
North American Datum of 1983 (NAD83)  
World Geodetic System of 1984 (WGS84). Projection and  
1 000-meter grid: Universal Transverse Mercator, Zone 12S  
10 000-foot ticks: Colorado Coordinate System of 1983  
(central zone)

Imagery:.....NAIP, July 2009  
Roads:.....©2006-2010 Tele Atlas  
Names:.....GNIS, 2008  
Hydrography:.....National Hydrography Dataset, 2009  
Contours:.....National Elevation Dataset, 1999



U.S. National Grid
100,000m Square ID
1J
Grid Zone Designation
12S



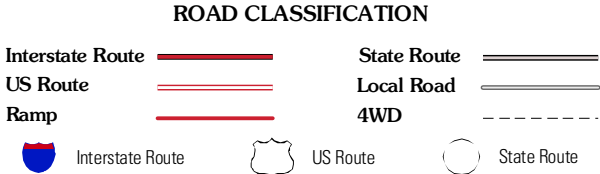
CONTOUR INTERVAL 40 FEET  
NORTH AMERICAN VERTICAL DATUM OF 1988

This map was produced to conform with version 0.5.10 of the  
draft USGS Standards for 7.5-Minute Quadrangle Maps.  
A metadata file associated with this product is draft version 0.5.11



QUADRANGLE LOCATION		
Middle Dry Fork	The Saddle	Long Point
Corcoran Peak	Winter Flats	Wagon Track Ridge
Corcoran Point	Round Mountain	Cameo

ADJOINING 7.5' QUADRANGLES



WINTER FLATS, CO  
2010