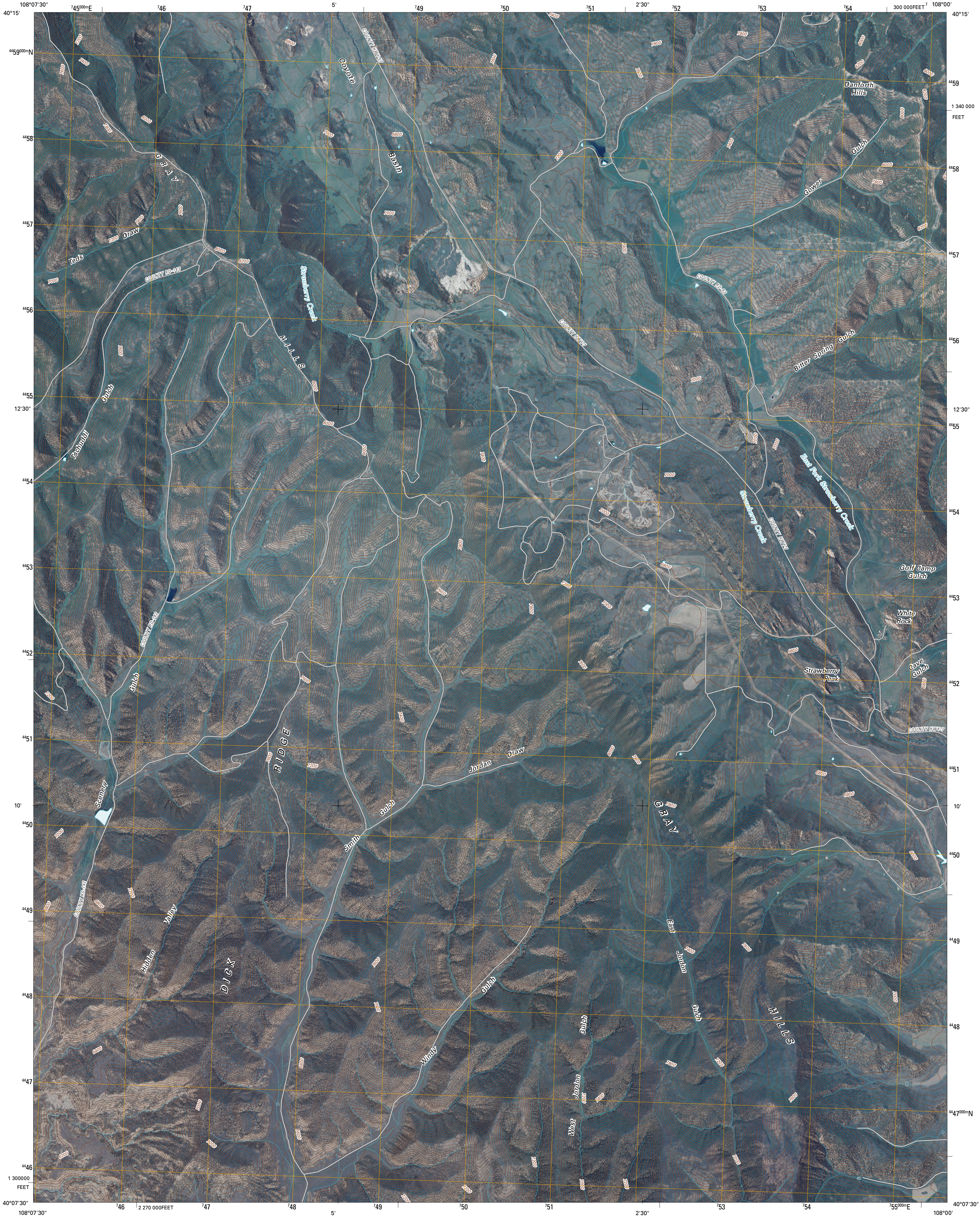




U.S. DEPARTMENT OF THE INTERIOR
U. S. GEOLOGICAL SURVEY

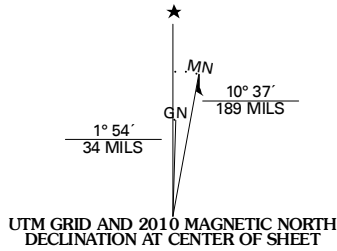


WHITE ROCK QUADRANGLE
COLORADO
7.5-MINUTE SERIES

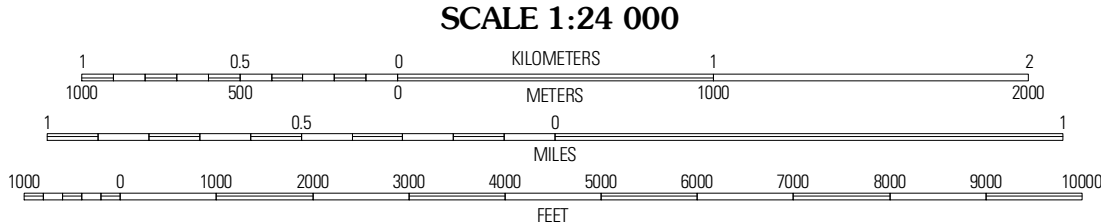


Produced by the United States Geological Survey
North American Datum of 1983 (NAD83)
World Geodetic System of 1984 (WGS84). Projection and
10 000-foot ticks: Colorado Coordinate System of 1983
(north zone)

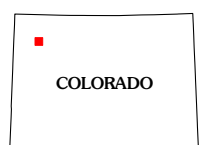
Imagery.....NAIP, June 2009 - July 2009
Roads.....©2006-2010 Tele Atlas
Names.....GNIS, 2008
Hydrography.....National Hydrography Dataset, 2009
Contours.....National Elevation Dataset, 2004



| U.S. National Grid |
|-----------------------|
| 100,000-m Square ID |
| 1K |
| Grid Zone Designation |
| 12T |



CONTOUR INTERVAL 40 FEET
NORTH AMERICAN VERTICAL DATUM OF 1988
This map was produced to conform with version 0.5.10 of the
draft USGS Standards for 7.5-Minute Quadrangle Maps.
A metadata file associated with this product is draft version 0.5.11



| QUADRANGLE LOCATION | | |
|------------------------|-------------------|-------------------------|
| Citadel Plains | Price Creek | Easton Gulch |
| Indian Valley | White Rock | Devils Hole Gulch |
| White River City | Buckskin Point | Meeker |

ADJOINING 7.5' QUADRANGLES

| ROAD CLASSIFICATION | | |
|---------------------|-------------|--|
| Interstate Route | State Route | |
| US Route | Local Road | |
| Ramp | 4WD | |
| | | |

WHITE ROCK, CO
2010