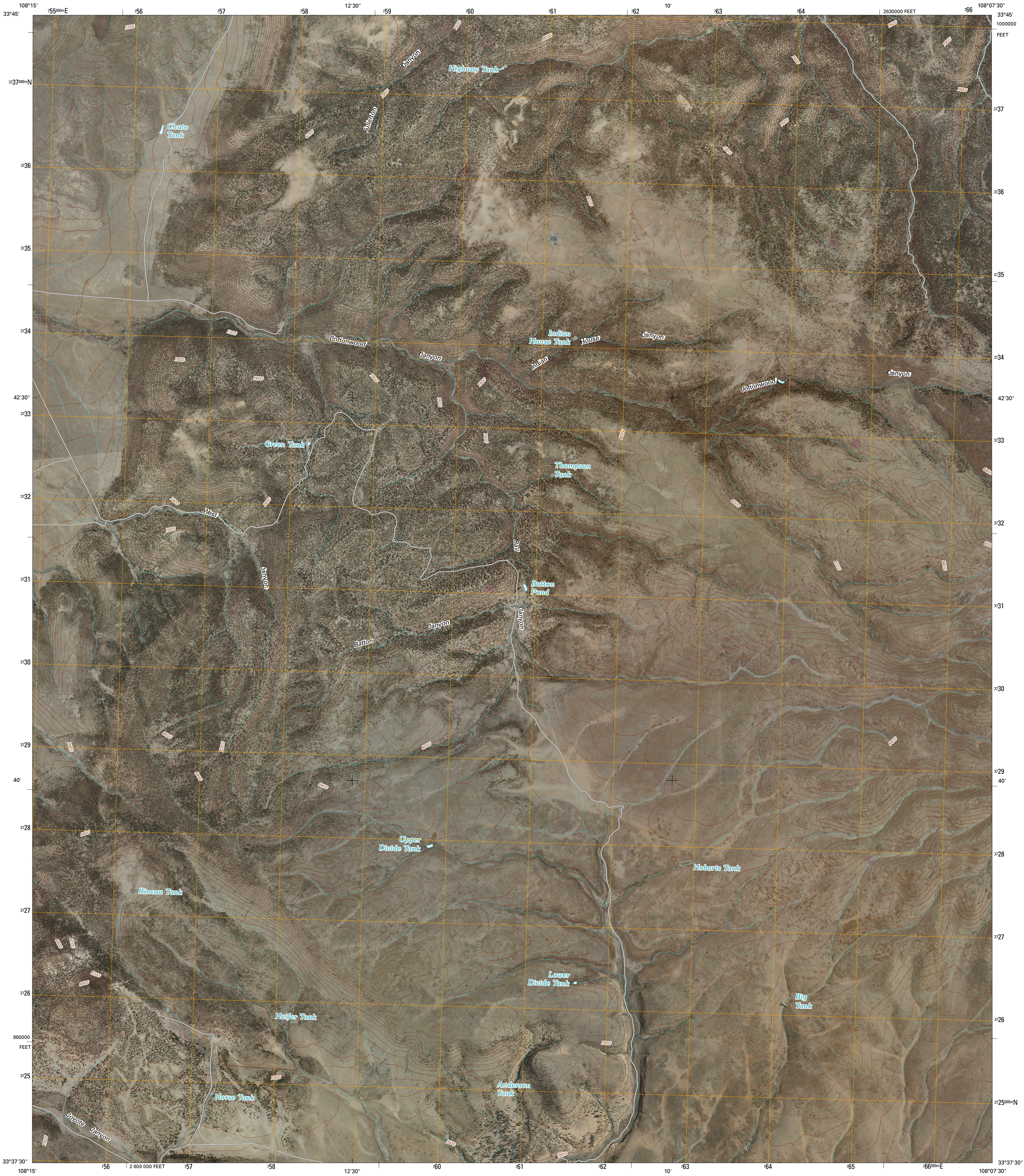




U.S. DEPARTMENT OF THE INTERIOR
U. S. GEOLOGICAL SURVEY

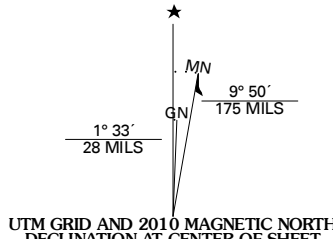


RAIL CANYON QUADRANGLE
NEW MEXICO
7.5-MINUTE SERIES

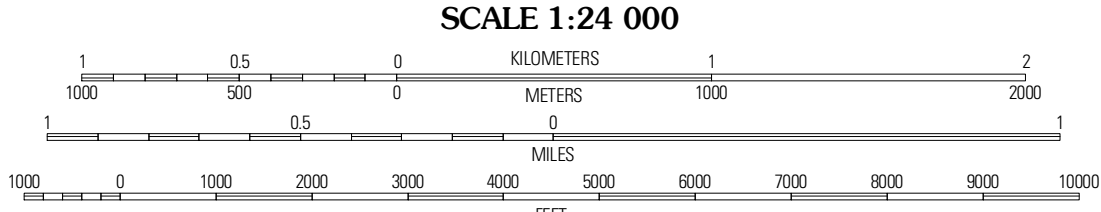


Produced by the United States Geological Survey
North American Datum of 1983 (NAD83)
World Geodetic System of 1984 (WGS84). Projection and
1 000-meter grid: Universal Transverse Mercator, Zone 12S
10 000-foot ticks: New Mexico Coordinate System of 1983
(west zone)

Imagery.....NAIP, May 2009
Roads.....©2006-2010 Tele Atlas
Names.....GNIS, 2008
Hydrography.....National Hydrography Dataset, 2009
Contours.....National Elevation Dataset, 2000



U.S. National Grid 100,000m Square ID
YC
Grid Zone Designation 12S



CONTOUR INTERVAL 40 FEET
NORTH AMERICAN VERTICAL DATUM OF 1988
This map was produced to conform with version 0.5.10 of the
draft USGS Standards for 7.5-Minute Quadrangle Maps.
A metadata file associated with this product is draft version 0.5.11



Red Spring	Fullerton	Shaw Mountain
Salvation Peak	Rail Canyon	Paloma Mountain
O Bar Canyon West	O Bar Canyon East	Indian Peaks West

ADJOINING 7.5' QUADRANGLES

ROAD CLASSIFICATION		
Interstate Route	State Route	Local Road
US Route	4WD	
Interstate Route	US Route	State Route

RAIL CANYON, NM
2010