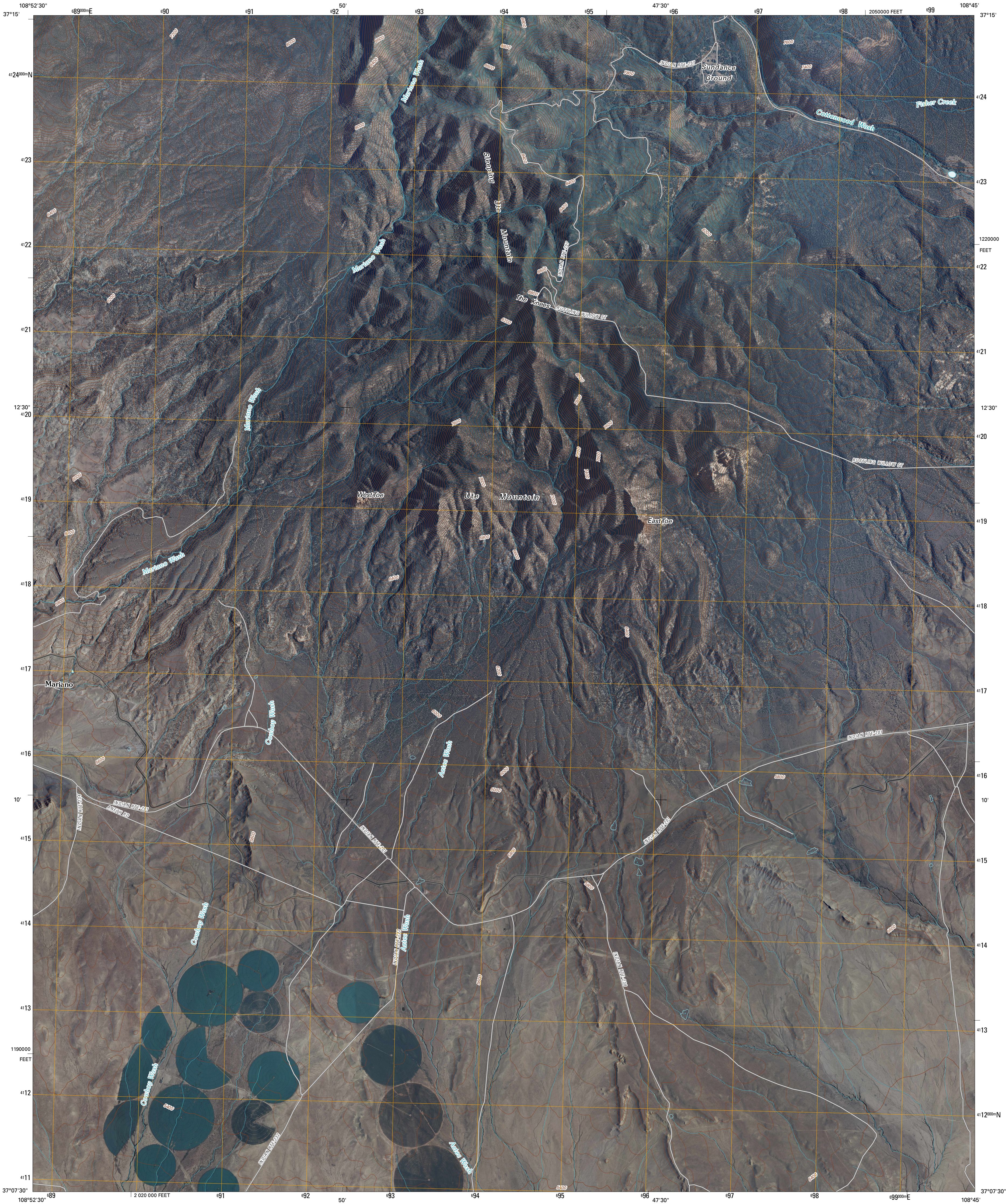




U.S. DEPARTMENT OF THE INTERIOR
U. S. GEOLOGICAL SURVEY

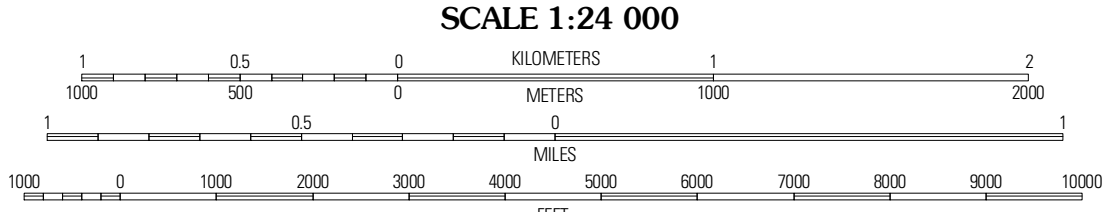
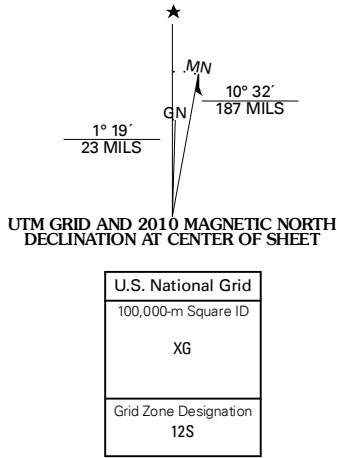


MARIANO WASH EAST QUADRANGLE
COLORADO
7.5-MINUTE SERIES

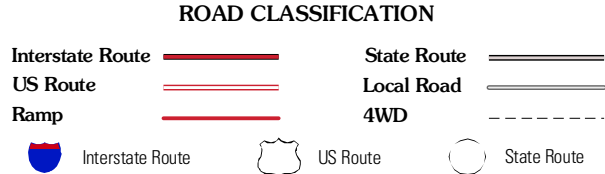
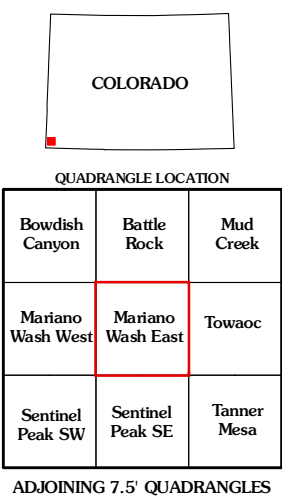


Produced by the United States Geological Survey
North American Datum of 1983 (NAD83)
World Geodetic System of 1984 (WGS84). Projection and
10 000-meter grid: Universal Transverse Mercator, Zone 12S
10 000-foot ticks: Colorado Coordinate System of 1983
(south zone)

Imagery.....NAIP, June 2009 - July 2009
Roads.....©2006-2010 Tele Atlas
Names.....GNIS, 2008
Hydrography.....National Hydrography Dataset, 2009
Contours.....National Elevation Dataset, 2005



CONTOUR INTERVAL 40 FEET
NORTH AMERICAN VERTICAL DATUM OF 1988
This map was produced to conform with version 0.5.10 of the
draft USGS Standards for 7.5-Minute Quadrangle Maps.
A metadata file associated with this product is draft version 0.5.11



MARIANO WASH EAST, CO
2010