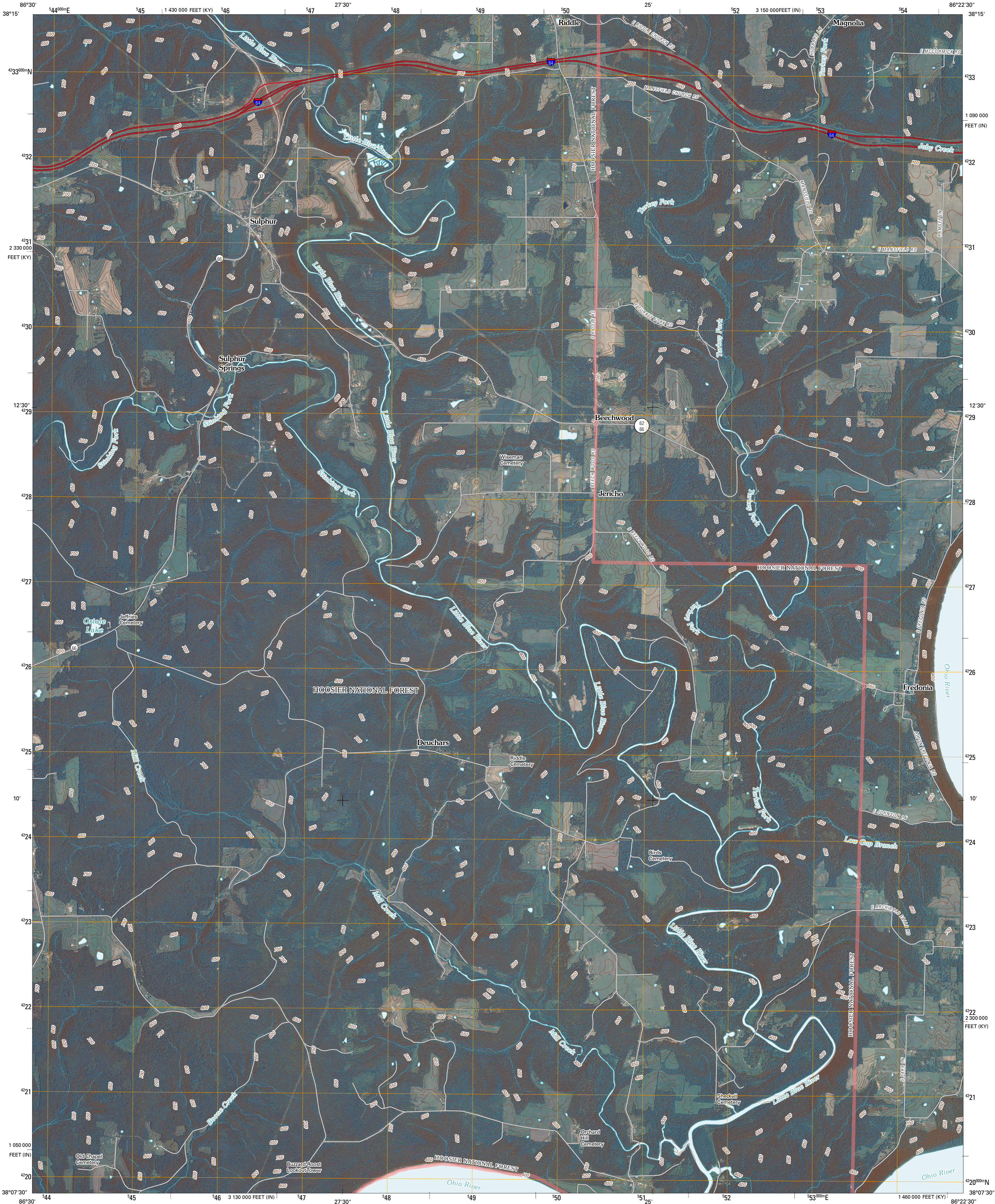




U.S. DEPARTMENT OF THE INTERIOR  
U. S. GEOLOGICAL SURVEY

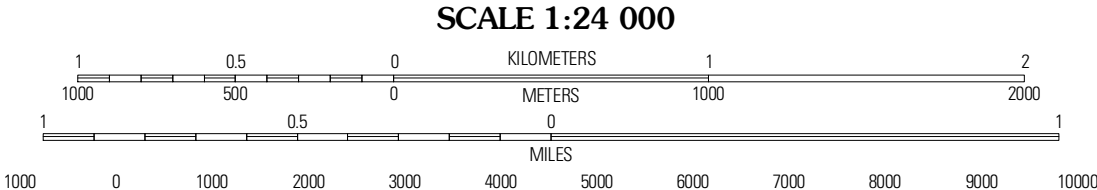
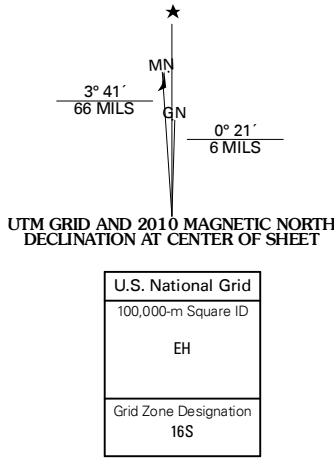


BEECHWOOD QUADRANGLE  
INDIANA-KENTUCKY  
7.5-MINUTE SERIES

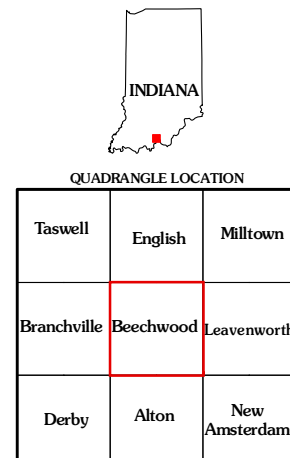


Produced by the United States Geological Survey  
North American Datum of 1983 (NAD83)  
World Geodetic System of 1984 (WGS84). Projection and  
1 000-foot grid: Indiana Coordinate System of 1983  
(west zone)  
and Kentucky Coordinate System of 1983  
(south zone)

Imagery.....NAIP, July 2008  
Roads.....with limited USGS updates, 2004 - 2008  
Roads within US Forest Service Lands.....FS Topo Data  
with limited Forest Service updates, 2009  
Names.....National Hydrography Dataset, 2008  
Contours.....National Elevation Dataset, 2002



CONTOUR INTERVAL 10 FEET  
NORTH AMERICAN VERTICAL DATUM OF 1988  
This map was produced to conform with version 0.5.10 of the  
draft USGS Standards for 7.5-Minute Quadrangle Maps.  
A metadata file associated with this product is draft version 0.5.12



ROAD CLASSIFICATION  
Interstate Route  
US Route  
Ramp  
Interstate Route  
US Route  
FS Primary Route  
State Route  
Local Road  
4WD  
FS Passenger Route  
FS High Clearance Route  
Check with local Forest Service unit for current travel conditions and restrictions.

BEECHWOOD, IN-KY  
2010