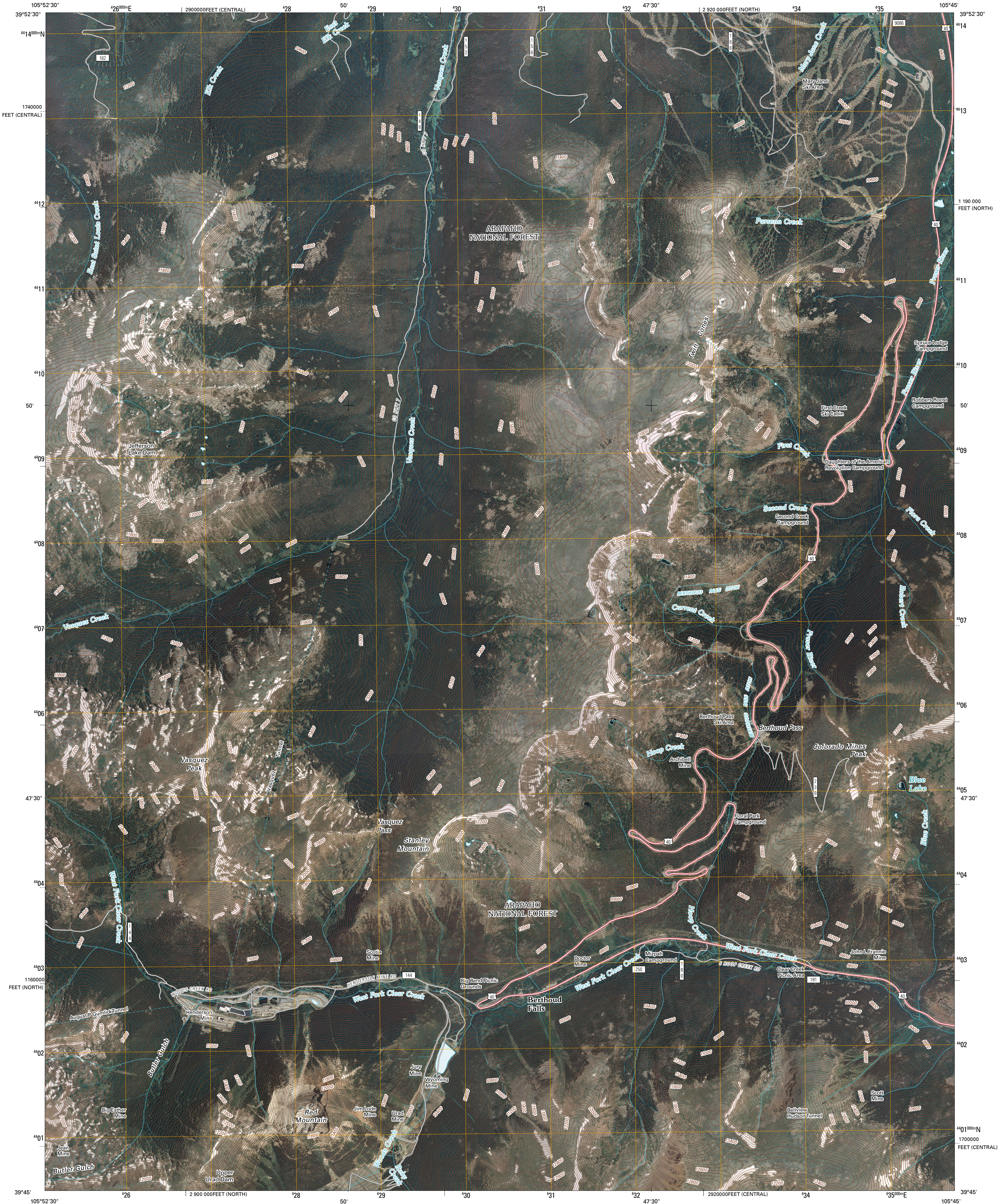




U.S. DEPARTMENT OF THE INTERIOR  
U. S. GEOLOGICAL SURVEY



BERTHOUD PASS QUADRANGLE  
COLORADO  
7.5-MINUTE SERIES



Produced by the United States Geological Survey  
North American Datum of 1983 (NAD83)  
World Geodetic System of 1984 (WGS84) Projection and  
1 000-meter grid: Universal Transverse Mercator, Zone 13S  
10 000-foot ticks: Colorado Coordinate System of 1983  
(north and central zones)

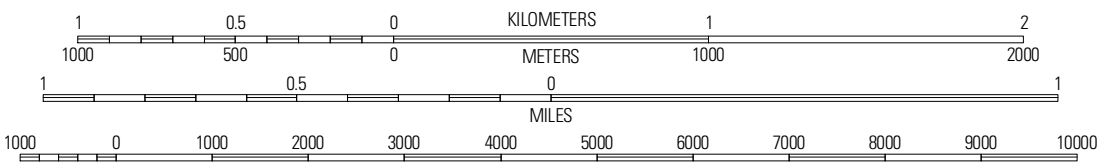
Imagery.....NAIP, July 2009  
Roads.....6/2006-2010 Tele Atlas  
Roads within US Forest Service Lands.....FS Topo Data  
with limited Forest Service updates, 2009  
Names.....GNIS, 2009  
Hydrography.....National Hydrography Dataset, 2009  
Contours.....National Elevation Dataset, 2001

UTM GRID AND 2011 MAGNETIC NORTH  
DECLINATION AT CENTER OF SHEET

MN  
9° 25' 167 MILLS  
0° 31' 9 MILLS

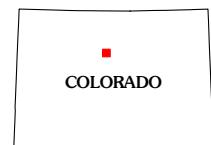
U.S. National Grid  
100,000m Square ID  
DE  
Grid Zone Designation  
13S

SCALE 1:24 000



CONTOUR INTERVAL 40 FEET  
NORTH AMERICAN VERTICAL DATUM OF 1988

This map was produced to conform with version 0.5.10 of the  
draft USGS Standards for 7.5-Minute Quadrangle Maps.  
A metadata file associated with this product is draft version 0.5.13



QUADRANGLE LOCATION		
Bottle Pass	Fraser	East Portal
Byers Peak	Berthoud Pass	Empire
Lowland Pass	Grays Peak	Georgetown

ADJOINING 7.5' QUADRANGLES

ROAD CLASSIFICATION

Interstate Route  
US Route  
Ramp  
FS Primary Route

State Route  
Local Road  
4WD  
FS Passenger Route  
FS High Clearance Route

Check with local Forest Service unit  
for current travel conditions and restrictions.

BERTHOUD PASS, CO  
2011