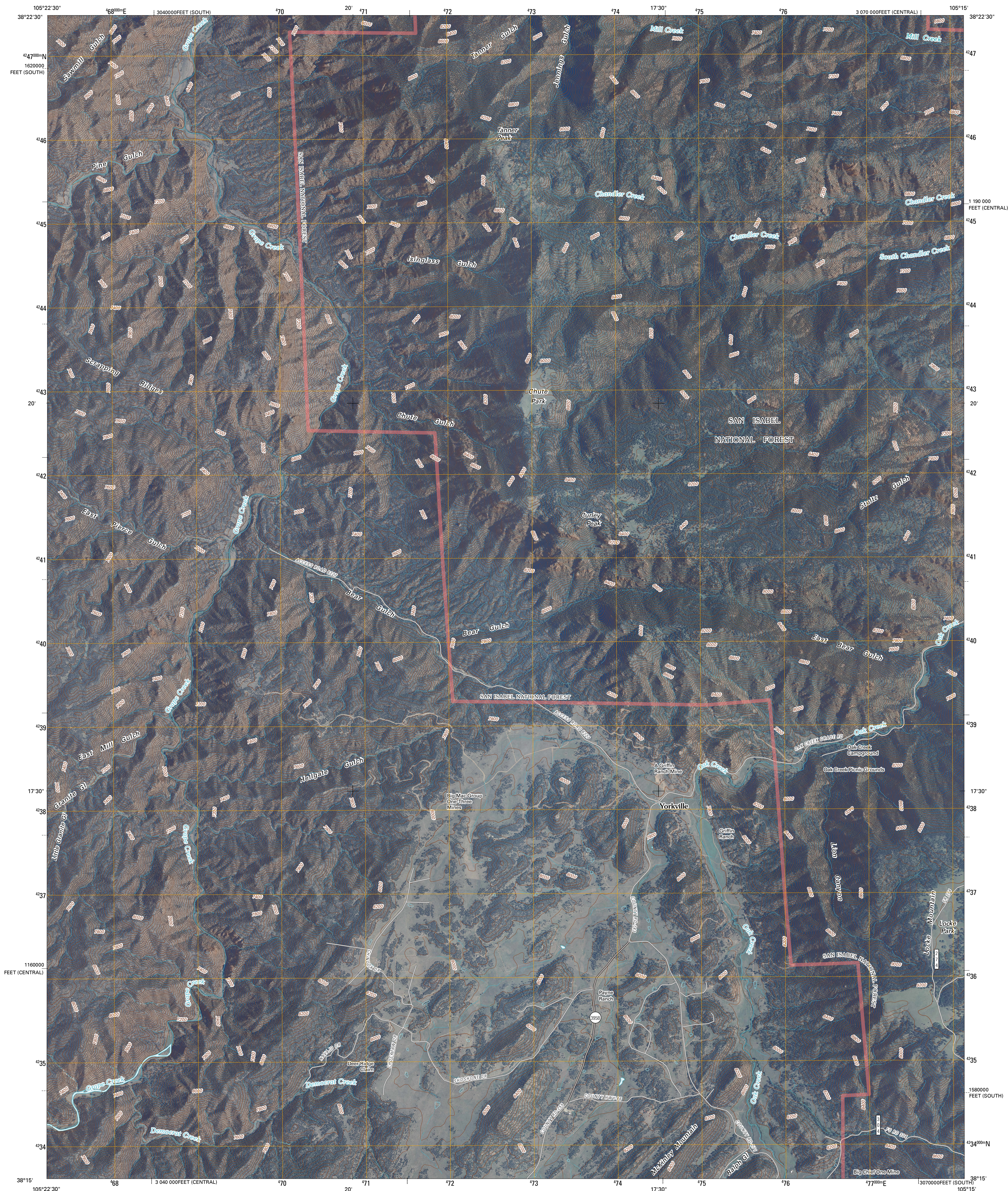




U.S. DEPARTMENT OF THE INTERIOR
U. S. GEOLOGICAL SURVEY

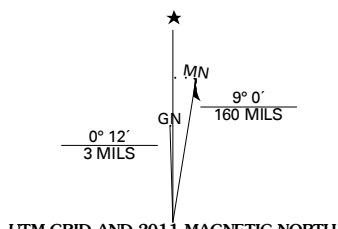


CURLEY PEAK QUADRANGLE
COLORADO
7.5-MINUTE SERIES

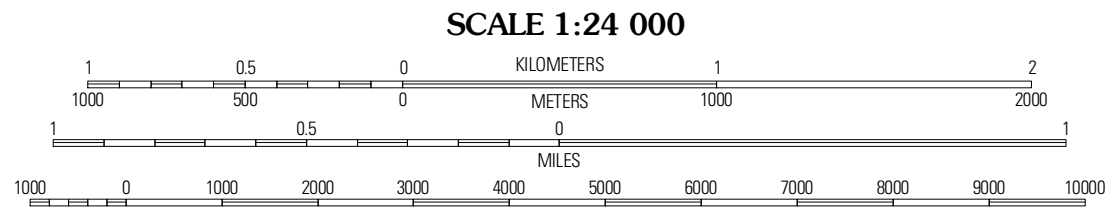


Produced by the United States Geological Survey
North American Datum of 1983 (NAD83)
World Geodetic System of 1984 (WGS84). Projection and
1 000-meter grid: Universal Transverse Mercator, Zone 13S
10 000-foot ticks: Colorado Coordinate System of 1983
(central and south zones)

Imagery.....NAIP, August 2009
Roads.....2006-2010 Tele Atlas
Roads within US Forest Service Lands.....FS Topo Data
with limited Forest Service updates, 2009
Names.....GNIS, 2009
Hydrography.....National Hydrography Dataset, 2009
Contours.....National Elevation Dataset, 2006



U.S. National Grid
100,000-m Square ID
DC
Grid Zone Designation
13S



CONTOUR INTERVAL 40 FEET
NORTH AMERICAN VERTICAL DATUM OF 1988

This map was produced to conform with version 0.5.10 of the
draft USGS Standards for 7.5-Minute Quadrangle Maps.
A metadata file associated with this product is draft version 0.5.13

COLORADO		
QUADRANGLE LOCATION		
McIntyre Falls	Royal Gorge	Canon City
Iron Mountain	Curley Peak	Rockvale
Wesciffe	Mount Tyndal	Hardcastle Mountain
ADJOINING 7.5 QUADRANGLES		

ROAD CLASSIFICATION	
Interstate Route	State Route
US Route	Local Road
Ramp	4WD
Interstate Route	US Route
FS Primary Route	FS Passenger Route
FS High Clearance Route	

Check with local Forest Service unit
for current travel conditions and restrictions.

CURLEY PEAK, CO
2011