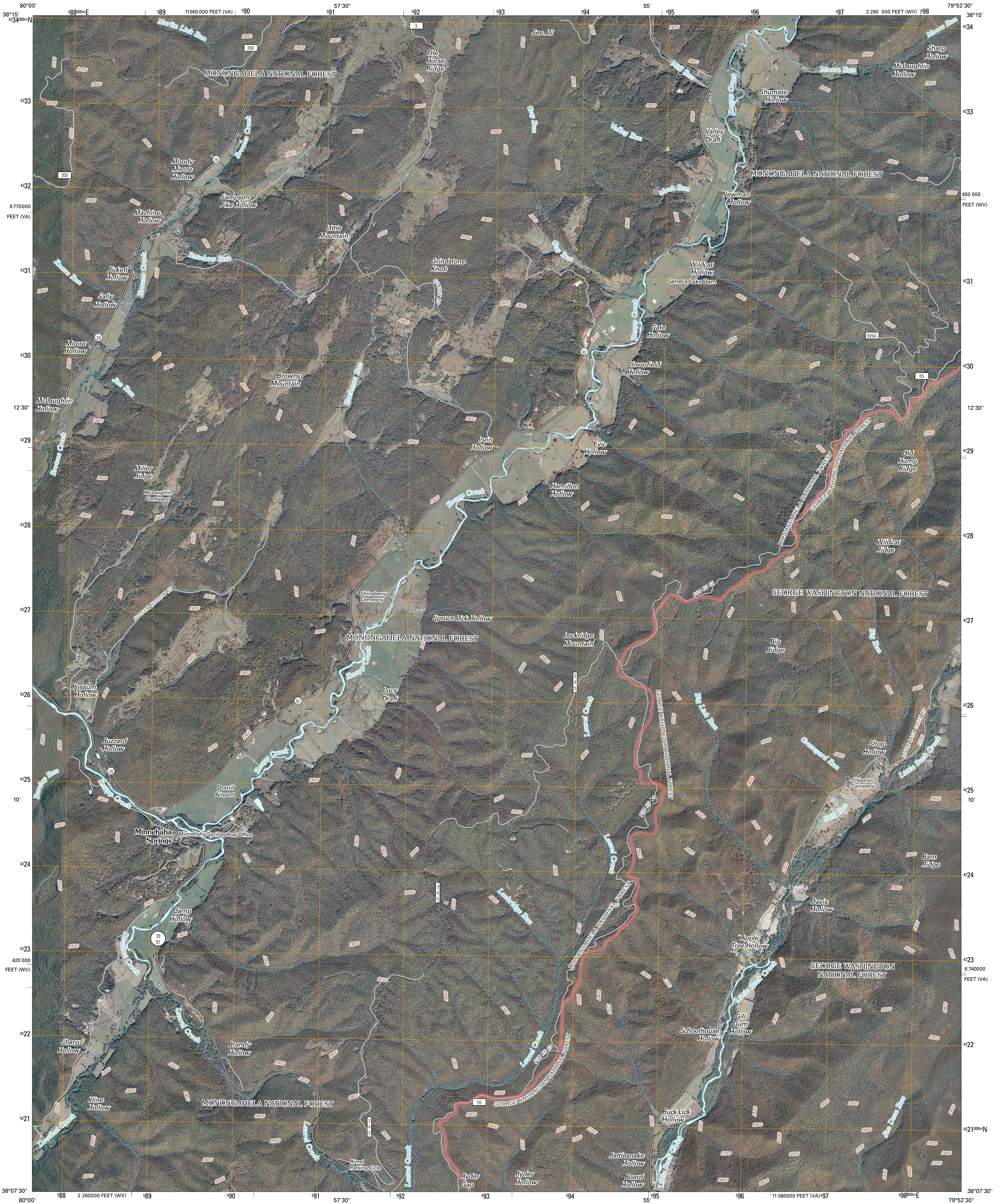




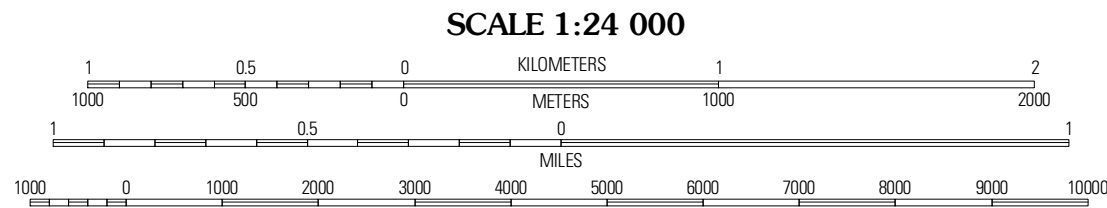
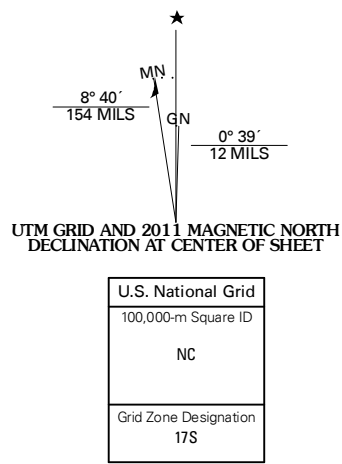
U.S. DEPARTMENT OF THE INTERIOR
U. S. GEOLOGICAL SURVEY



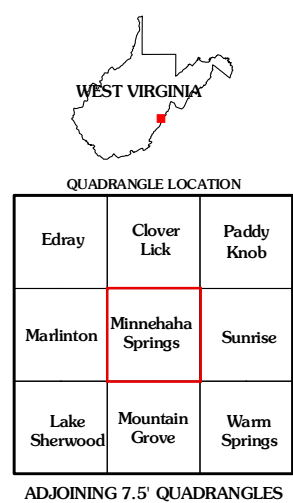
MINNEHAHA SPRINGS QUADRANGLE
WEST VIRGINIA-VIRGINIA
7.5-MINUTE SERIES



Produced by the United States Geological Survey
North American Datum of 1983 (NAD83)
World Geodetic System of 1984 (WGS84) Projection and
1 000-meter grid: Universal Transverse Mercator, Zone 17S
10 000-foot ticks: West Virginia Coordinate System of 1983
(south zone) and Virginia Coordinate System of 1983
(north zone)
Imagery:.....NAIP, October 2009
Roads:.....2006-2010 Tele Atlas
Roads within US Forest Service Lands:.....FS Topo Data
with limited Forest Service updates, 2009
Name:.....GNIS, 2009
Hydrography:.....National Hydrography Dataset, 2009
Contours:.....National Elevation Dataset, 2006



CONTOUR INTERVAL 40 FEET
NORTH AMERICAN VERTICAL DATUM OF 1988
This map was produced to conform with version 0.5.10 of the
draft USGS Standards for 7.5-Minute Quadrangle Maps.
A metadata file associated with this product is draft version 0.5.13



ROAD CLASSIFICATION
Interstate Route:.....
US Route:.....
Ramp:.....
State Route:.....
Local Road:.....
4WD:.....
FS Primary Route:.....
US Route:.....
FS Passenger Route:.....
FS High Clearance Route:.....
Check with local Forest Service unit
for current travel conditions and restrictions.

MINNEHAHA SPRINGS, WV-VA
2011