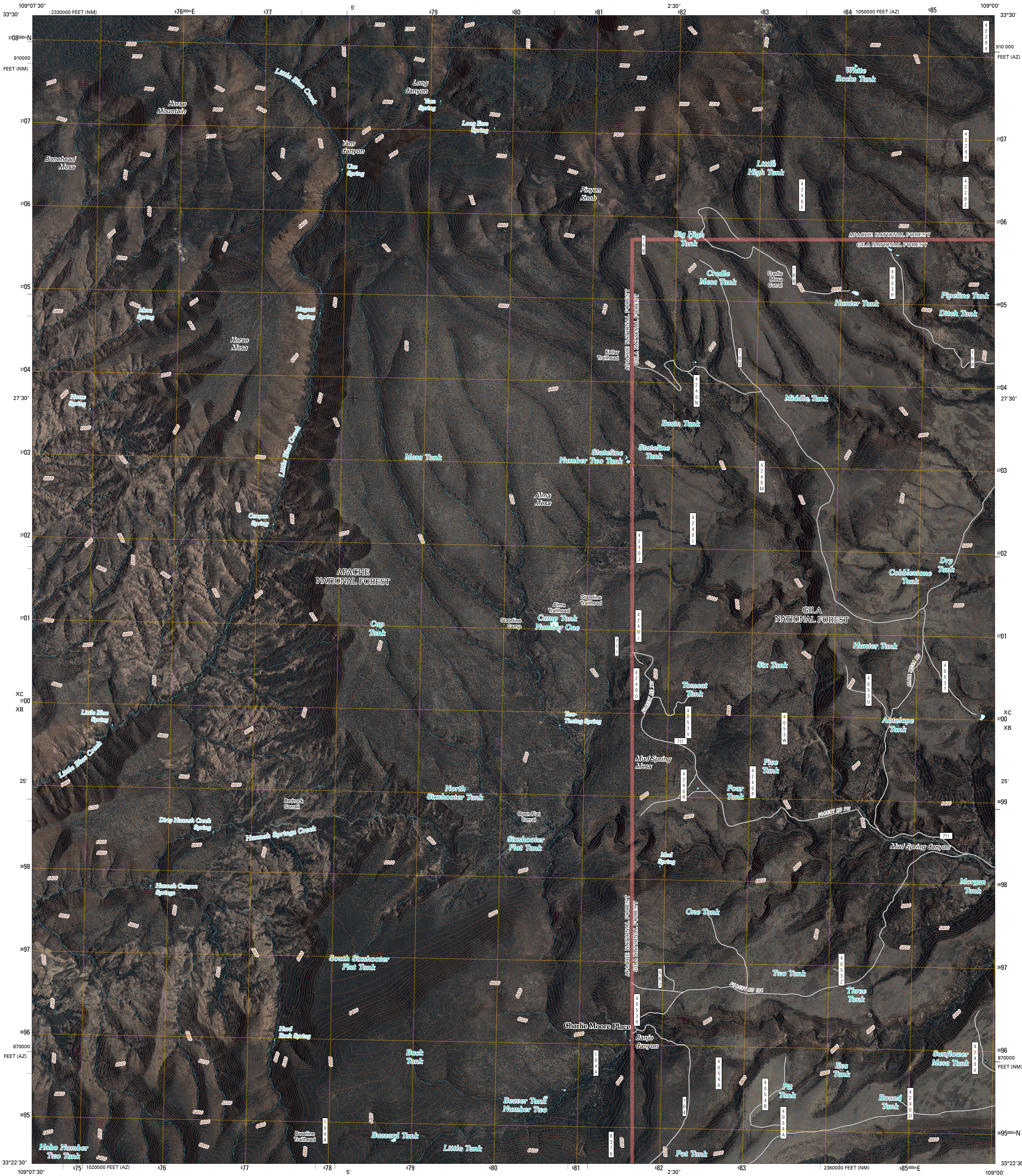




U.S. DEPARTMENT OF THE INTERIOR
U. S. GEOLOGICAL SURVEY

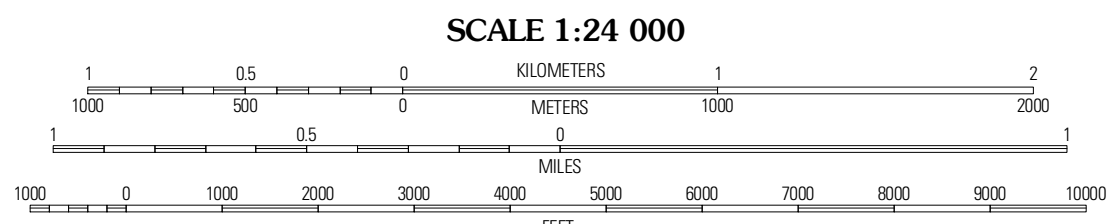
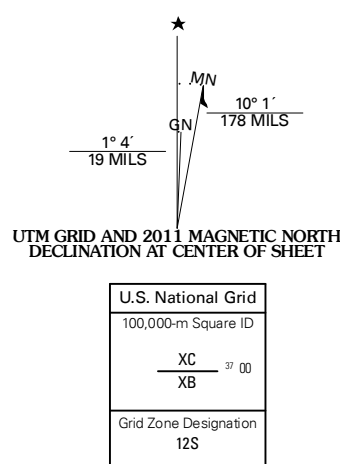


ALMA MESA QUADRANGLE
ARIZONA-NEW MEXICO
7.5-MINUTE SERIES

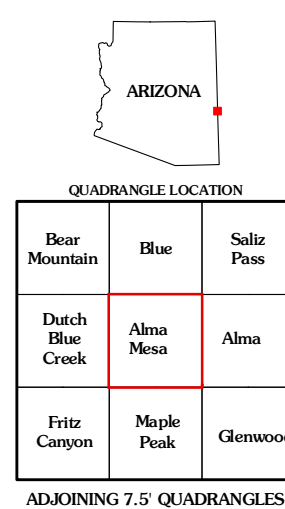


Produced by the United States Geological Survey
North American Datum of 1983 (NAD83)
World Geodetic System of 1984 (WGS84). Projection and
1000-meter grid: Universal Transverse Mercator, Zone 12S
10 000-foot ticks: Arizona Coordinate System of 1983
(east zone)
and New Mexico Coordinate System of 1983
(west zone)

Imagery.....NAP, June 2007
Roads.....2006-2010 Tele Atlas
Roads within US Forest Service Lands.....FS Topo Data
with limited Forest Service updates, 2009
Names.....GNIS, 2009
Hydrography.....National Hydrography Dataset, 2007
Contours.....National Elevation Dataset, 2001



CONTOUR INTERVAL 40 FEET
NORTH AMERICAN VERTICAL DATUM OF 1988
This map was produced to conform with version 0.5.10 of the
draft USGS Standards for 7.5-Minute Quadrangle Maps.
A metadata file associated with this product is draft version 0.5.13



ROAD CLASSIFICATION
Interstate Route
US Route
Ramp
State Route
Local Road
4WD
FS Primary Route
US Route
FS Passenger Route
FS High Clearance Route
Check with local Forest Service unit
for current travel conditions and restrictions.

ALMA MESA, AZ-NM
2011