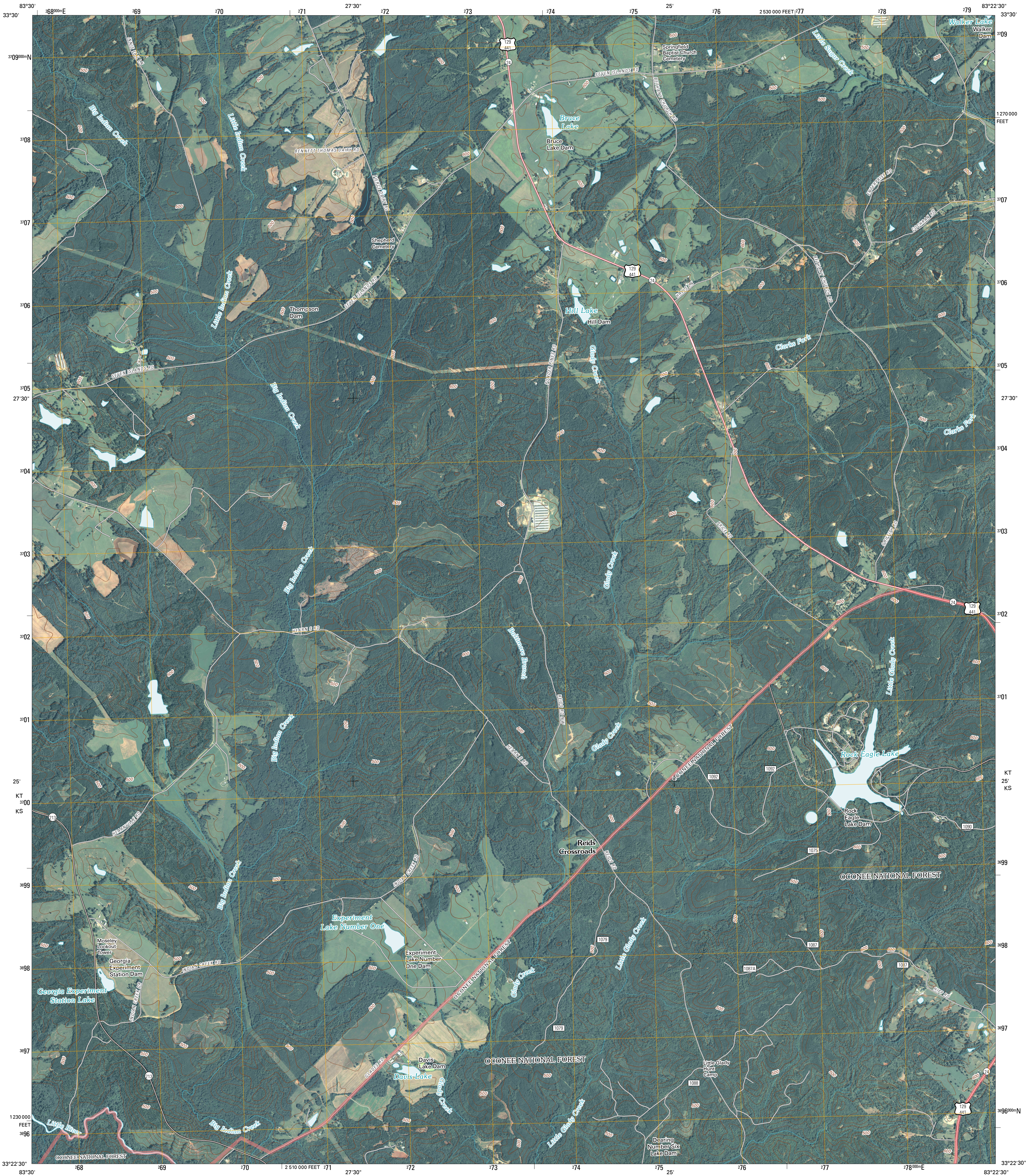




U.S. DEPARTMENT OF THE INTERIOR
U. S. GEOLOGICAL SURVEY

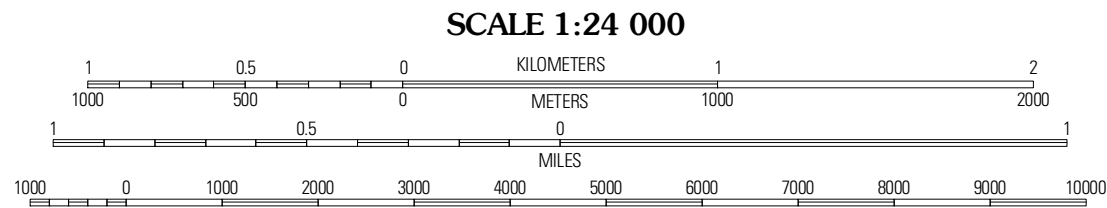
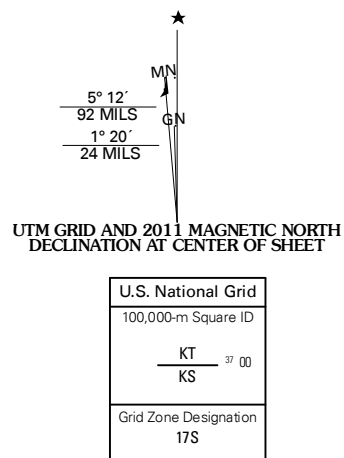


ROCK EAGLE LAKE QUADRANGLE
GEORGIA
7.5-MINUTE SERIES

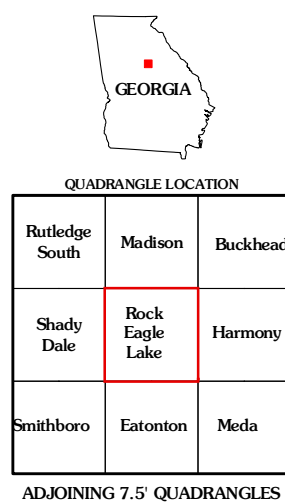


Produced by the United States Geological Survey
North American Datum of 1983 (NAD83)
World Geodetic System of 1984 (WGS84). Projection and
1 000-meter grid: Universal Transverse Mercator, Zone 17S
10 000-foot ticks: Georgia Coordinate System of 1983
(west zone)

Imagery.....N/AIP, September 2009
Roads.....©2006-2010 Tele Atlas
Roads within US Forest Service Lands.....FSTopo Data
with limited Forest Service updates, 2009
Names.....GNIS, 2009
Hydrography.....National Hydrography Dataset, 2009
Contours.....National Elevation Dataset, 2000



CONTOUR INTERVAL 20 FEET
NORTH AMERICAN VERTICAL DATUM OF 1988
This map was produced to conform with version 0.5.10 of the
draft USGS Standards for 7.5-Minute Quadrangle Maps.
A metadata file associated with this product is draft version 0.5.13



ROAD CLASSIFICATION
Interstate Route
US Route
Ramp
State Route
Local Road
4WD
US Route
FS Primary Route
FS Passenger Route
FS High Clearance Route
Check with local Forest Service unit
for current travel conditions and restrictions.

ROCK EAGLE LAKE, GA
2011