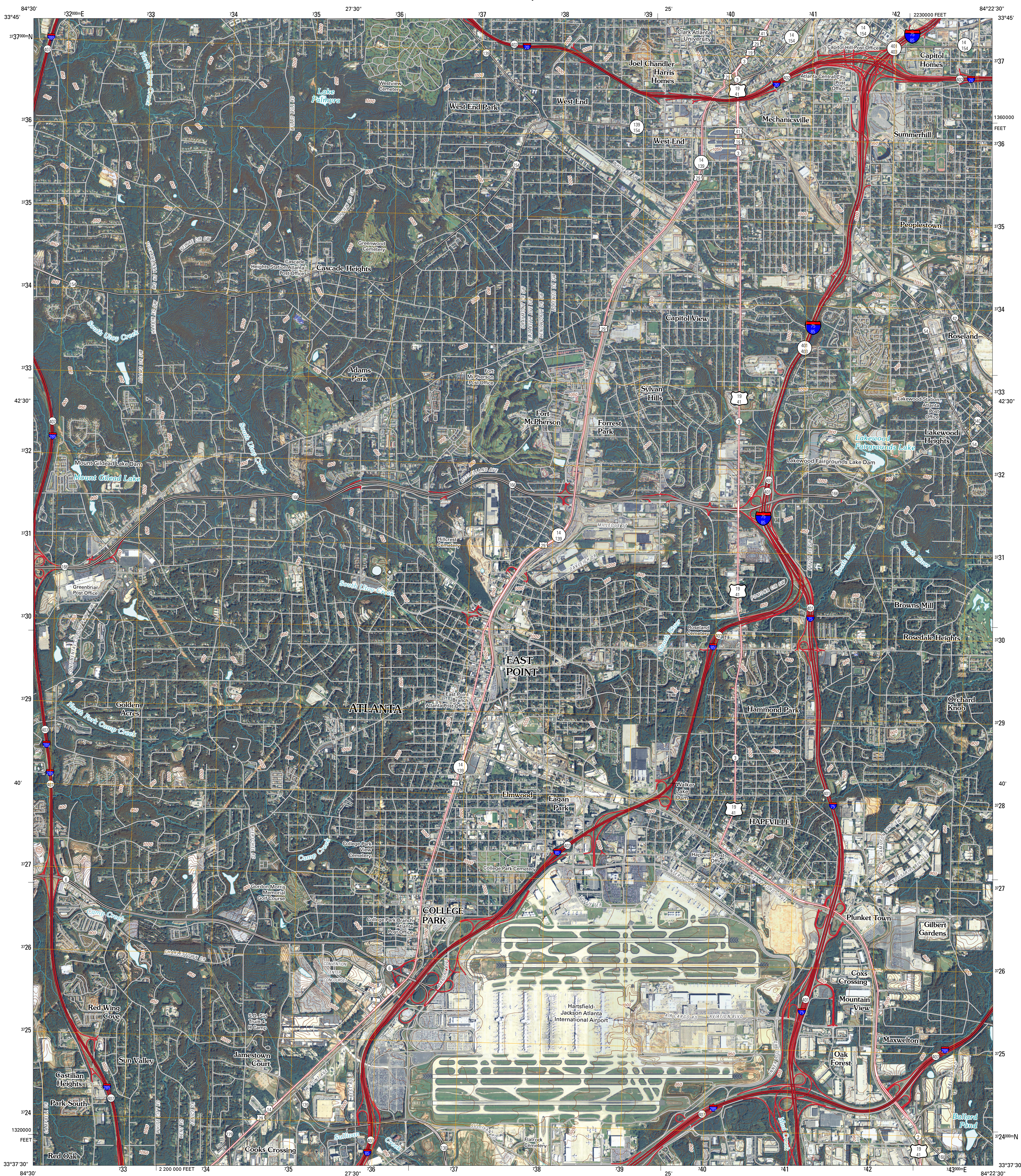




SOUTHWEST ATLANTA QUADRANGLE
GEORGIA
7.5-MINUTE SERIES

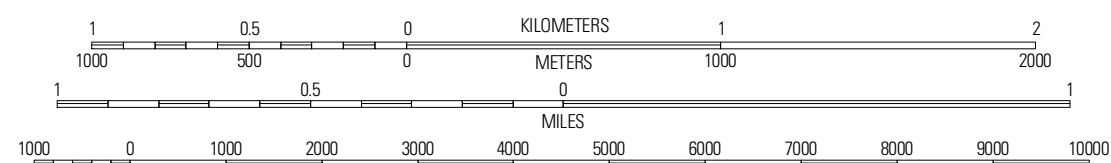


Produced by the United States Geological Survey
North American Datum of 1983 (NAD83)
World Geodetic System of 1984 (WGS84). Projection and
1 000-meter grid: Universal Transverse Mercator, Zone 16S
10 000-foot ticks: Georgia Coordinate System of 1983
(west zone)

Imagery.....	NAIP, September 2009
Roads.....	©2006-2010 Tele Atlas
Names.....	GNIS, 2009
Hydrography.....	National Hydrography Dataset, 2009
Contours.....	National Elevation Dataset, 2009

U.S. National Grid
100,000-m Square ID
GC
Grid Zone Designation
16S

SCALE 1:24 000



CONTOUR INTERVAL 10 FEET
NORTH AMERICAN VERTICAL DATUM OF 1988






This map was produced to conform with version 0.5.10 of the draft USGS Standards for 7.5-Minute Quadrangle Maps. A metadata file associated with this product is draft version 0.5.11



Mableton	Northwest Atlanta	Northeast Atlanta
Ben Hill	Southwest Atlanta	Southeast Atlanta
Fairburn	Riverdale	Jonesboro

ADJOINING 7.5' QUADRANGLES

ROAD CLASSIFICATION

Interstate Route State Route
US Route  Local Road 
Ramp 4WD
 Interstate Route  US Route  State Route

SOUTHWEST ATLANTA, GA
2011