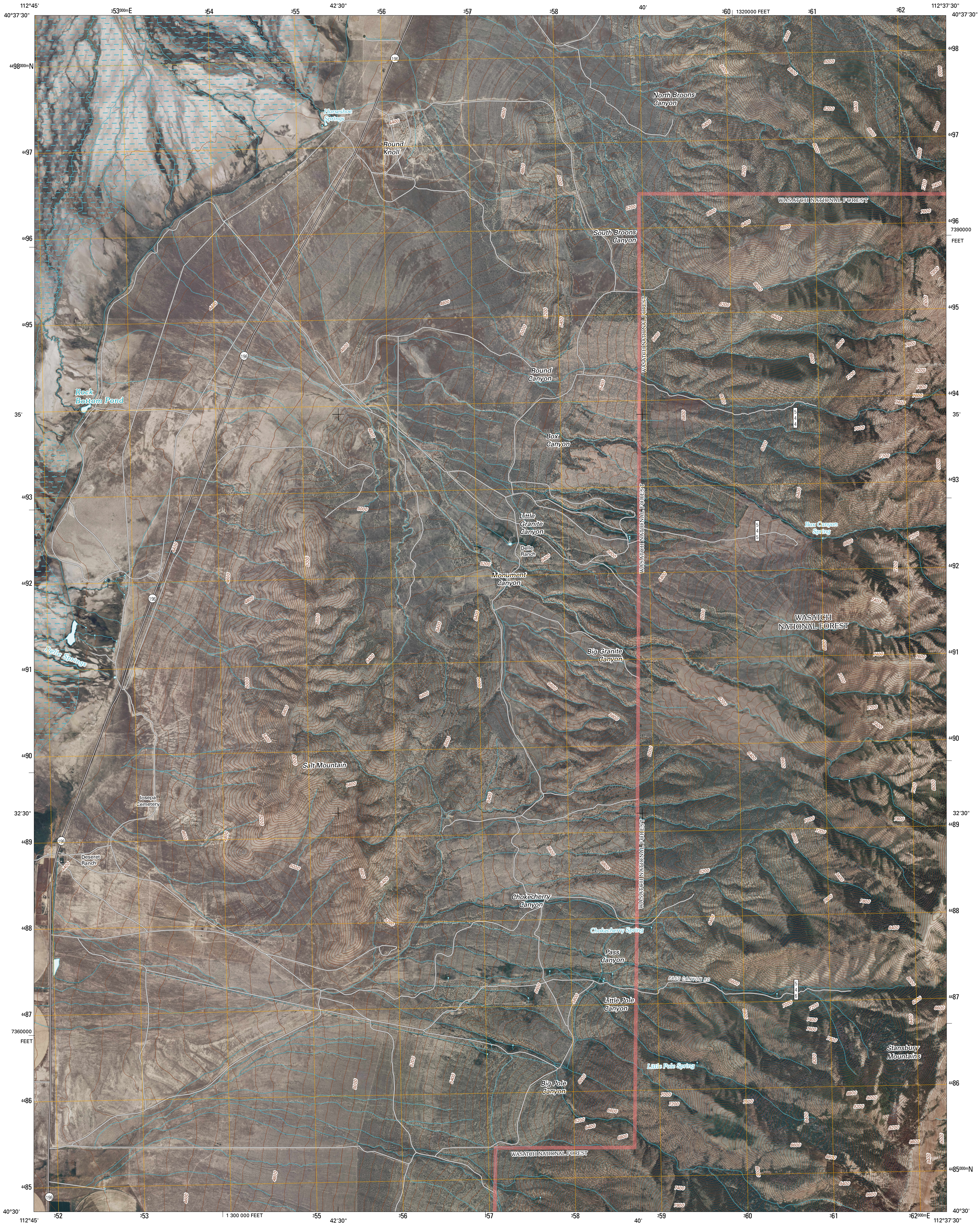




U.S. DEPARTMENT OF THE INTERIOR
U. S. GEOLOGICAL SURVEY



SALT MOUNTAIN QUADRANGLE
UTAH
7.5-MINUTE SERIES



Produced by the United States Geological Survey
North American Datum of 1983 (NAD83)
World Geodetic System of 1984 (WGS84). Projection and
1 000-meter grid: Universal Transverse Mercator, Zone 12T
10 000-foot ticks: Utah Coordinate System of 1983
(central zone)

Imagery.....NAIP, June 2009
Roads.....2006-2010 Tele Atlas
Roads within US Forest Service Lands.....FS Topo Data
with limited Forest Service updates, 2009
Names.....GNIS, 2009
Hydrography.....National Hydrography Dataset, 2009
Contours.....National Elevation Dataset, 2002

UTM GRID AND 2011 MAGNETIC NORTH
DECLINATION AT CENTER OF SHEET

17° 11' 18" N
12° 27' 22" N

U.S. National Grid
100,000-m Square ID
UK
Grid Zone Designation
12T

SCALE 1:24 000

1 000 500 0 500 1000 2000
KILOMETERS

1 1000 500 0 500 1000 2000
METERS

1 1000 2000 3000 4000 5000 6000 7000 8000 9000 10000
MILES

CONTOUR INTERVAL 40 FEET
NORTH AMERICAN VERTICAL DATUM OF 1988

This map was produced to conform with version 0.5.10 of the
draft USGS Standards for 7.5-Minute Quadrangle Maps.
A metadata file associated with this product is draft version 0.5.13

QUADRANGLE LOCATION		
Hastings Pass NE	Temple	Flux
Hastings Pass SE	Salt Mountain	North Willow Canyon
Hickman Knolls	Deseret Peak West	Deseret Peak East

ADJOINING 7.5' QUADRANGLES

ROAD CLASSIFICATION

Interstate Route
US Route
Ramp

State Route
Local Road
4WD

Interstate Route
US Route
FS Primary Route

State Route
FS Passenger Route
FS High Clearance Route

Check with local Forest Service unit
for current travel conditions and restrictions.

SALT MOUNTAIN, UT
2011