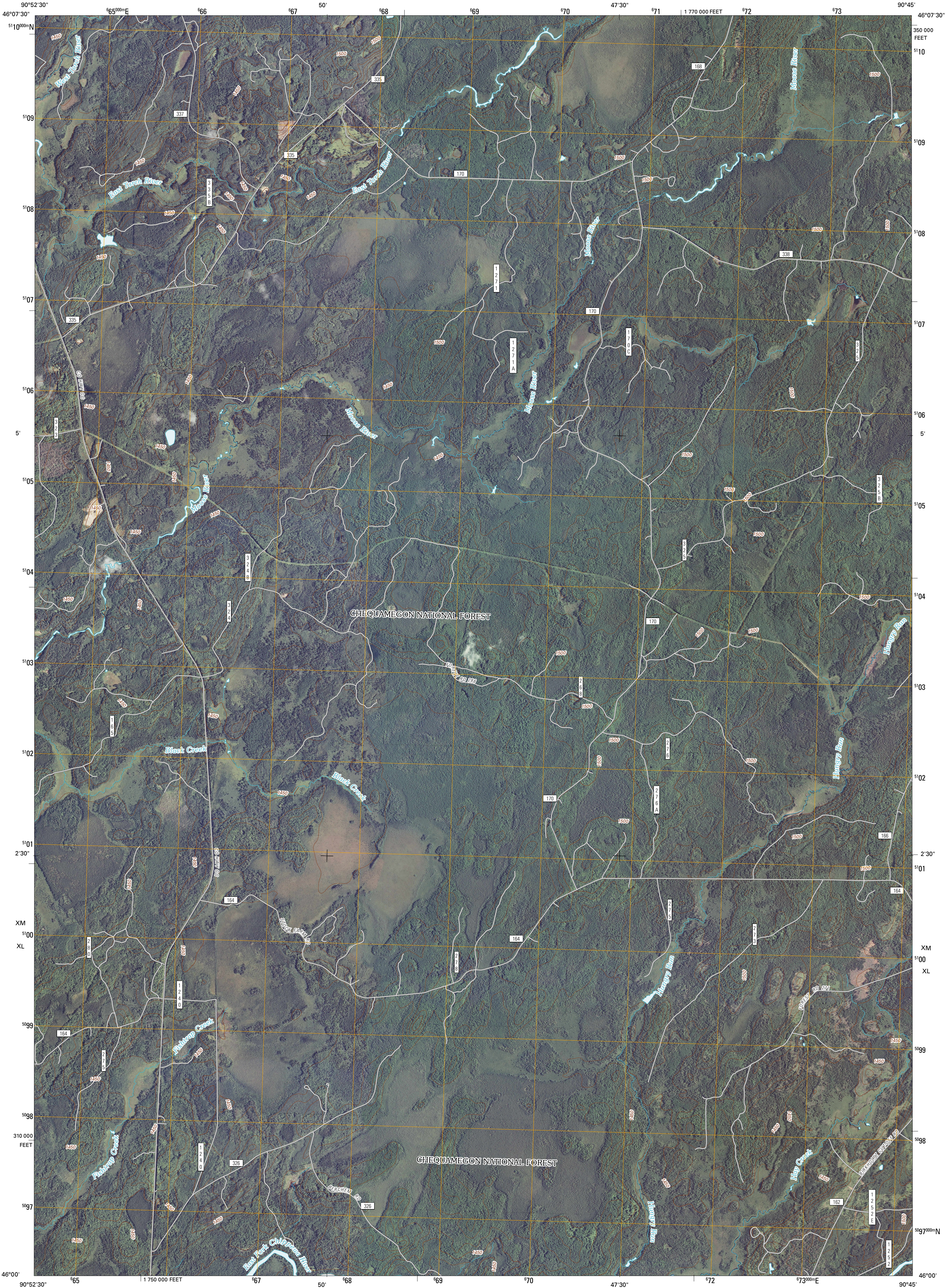




U.S. DEPARTMENT OF THE INTERIOR
U. S. GEOLOGICAL SURVEY



CLAM LAKE SE QUADRANGLE
WISCONSIN
7.5-MINUTE SERIES

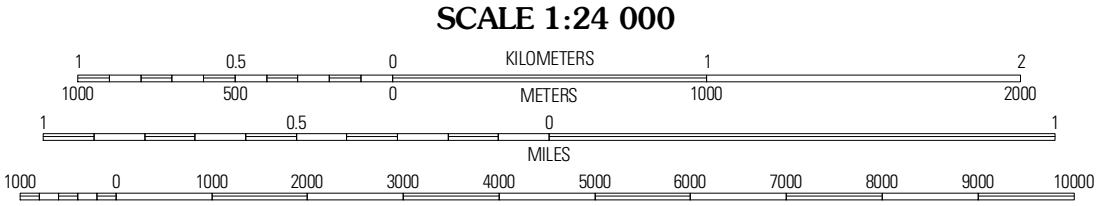


Produced by the United States Geological Survey
North American Datum of 1983 (NAD83)
World Geodetic System of 1984 (WGS84). Projection and
1 000-meter grid: Universal Transverse Mercator, Zone 15T
10 000-foot ticks: Wisconsin Coordinate System of 1983
(north zone)

Imagery.....NAIP, July 2008 - August 2008
Roads.....6/22/06-2010 Tele Atlas
Roads within US Forest Service Lands.....FSTopo Data
with limited Forest Service updates, 2009
Names.....GNIS, 2009
Hydrography.....National Hydrography Dataset, 2008
Contours.....National Elevation Dataset, 2002

UTM GRID AND 2011 MAGNETIC NORTH
DECLINATION AT CENTER OF SHEET

U.S. National Grid
100,000-m Square ID
XL
Grid Zone Designation
15T



CONTOUR INTERVAL 10 FEET
NORTH AMERICAN VERTICAL DATUM OF 1988

This map was produced to conform with version 0.5.10 of the
draft USGS Standards for 7.5-Minute Quadrangle Maps.
A metadata file associated with this product is draft version 0.5.13



QUADRANGLE LOCATION		
Clam Lake	Clam Lake NE	Morse
Clam Lake SW	Clam Lake SE	Shanagolden
Bludsdell Lake	Loretta	Kennedy

ROAD CLASSIFICATION

Interstate Route	State Route
US Route	Local Road
Ramp	4WD

FS Primary Route FS Passenger Route FS High Clearance Route

Check with local Forest Service unit
for current travel conditions and restrictions.

CLAM LAKE SE, WI
2011