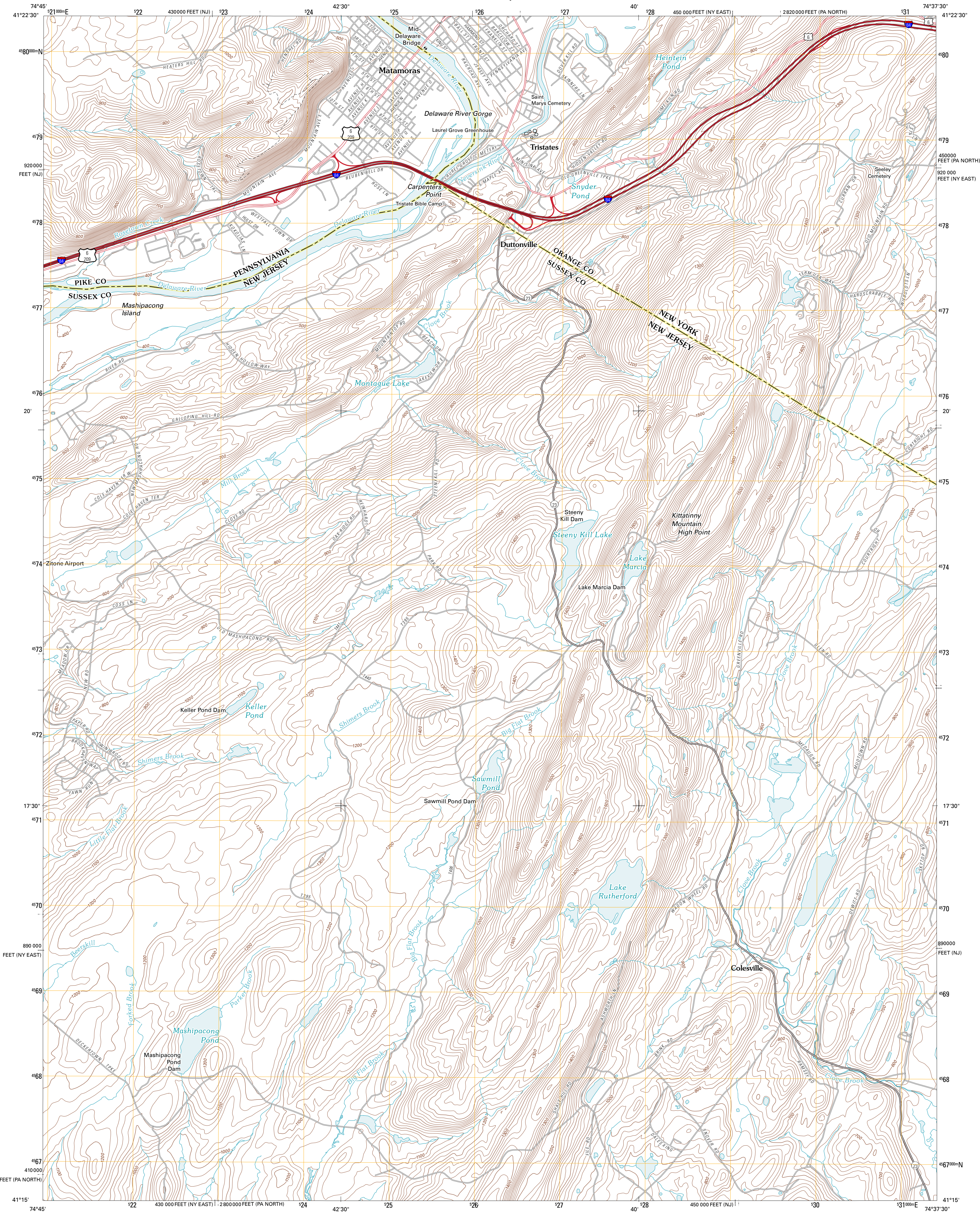




U.S. DEPARTMENT OF THE INTERIOR
U. S. GEOLOGICAL SURVEY

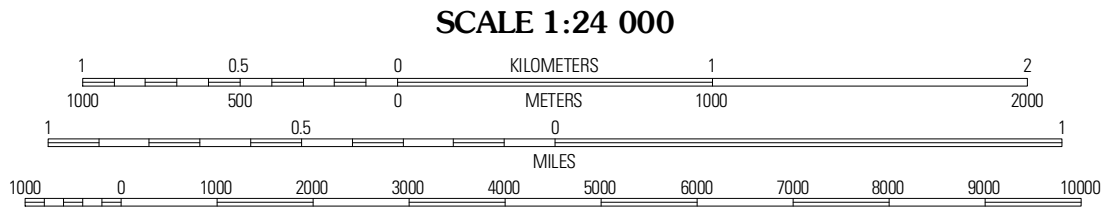
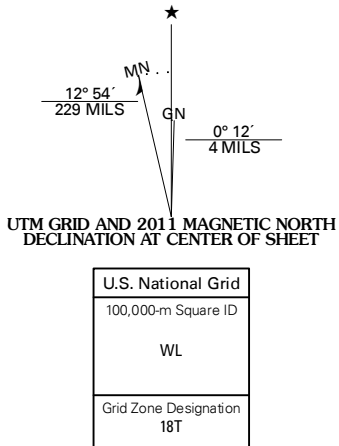


PORT JERVIS SOUTH QUADRANGLE
NEW YORK-NEW JERSEY-PENNSYLVANIA
7.5-MINUTE SERIES



Produced by the United States Geological Survey
North American Datum of 1983 (NAD83)
World Geodetic System of 1984 (WGS84). Projection and
1 000-meter grid: Universal Transverse Mercator, Zone 18T
10 000-foot ticks: New Jersey Coordinate System of 1983,
New York Coordinate System of 1983 (least zone),
Pennsylvania Coordinate System of 1983 (north zone)

Imagery: State of New Jersey, January 2008
Other Imagery provided by DE, NY, PA
Roads: 2006-2010 Tele Atlas
Names: GNIS, 2010
Hydrography: National Hydrography Dataset, 2007
Contours: National Elevation Dataset, 2002
Boundaries: Census, IBWC, IBC, USGS, 1972 - 2010



CONTOUR INTERVAL 20 FEET
NORTH AMERICAN VERTICAL DATUM OF 1988
This map was produced to conform with version 0.5.10
of the USGS US Topo Product Standard.
A metadata file associated with this product is draft version 0.5.15.NJ



Pond Eddy	Port Jervis North	Otsville
Milford	Port Jervis South	Untersville
Culvers Gap	Branchville	Hamburg

ROAD CLASSIFICATION
Interstate Route
US Route
Ramp
State Route
Local Road
4WD
Interstate Route
US Route
State Route

PORT JERVIS SOUTH, NY-NJ-PA
2011