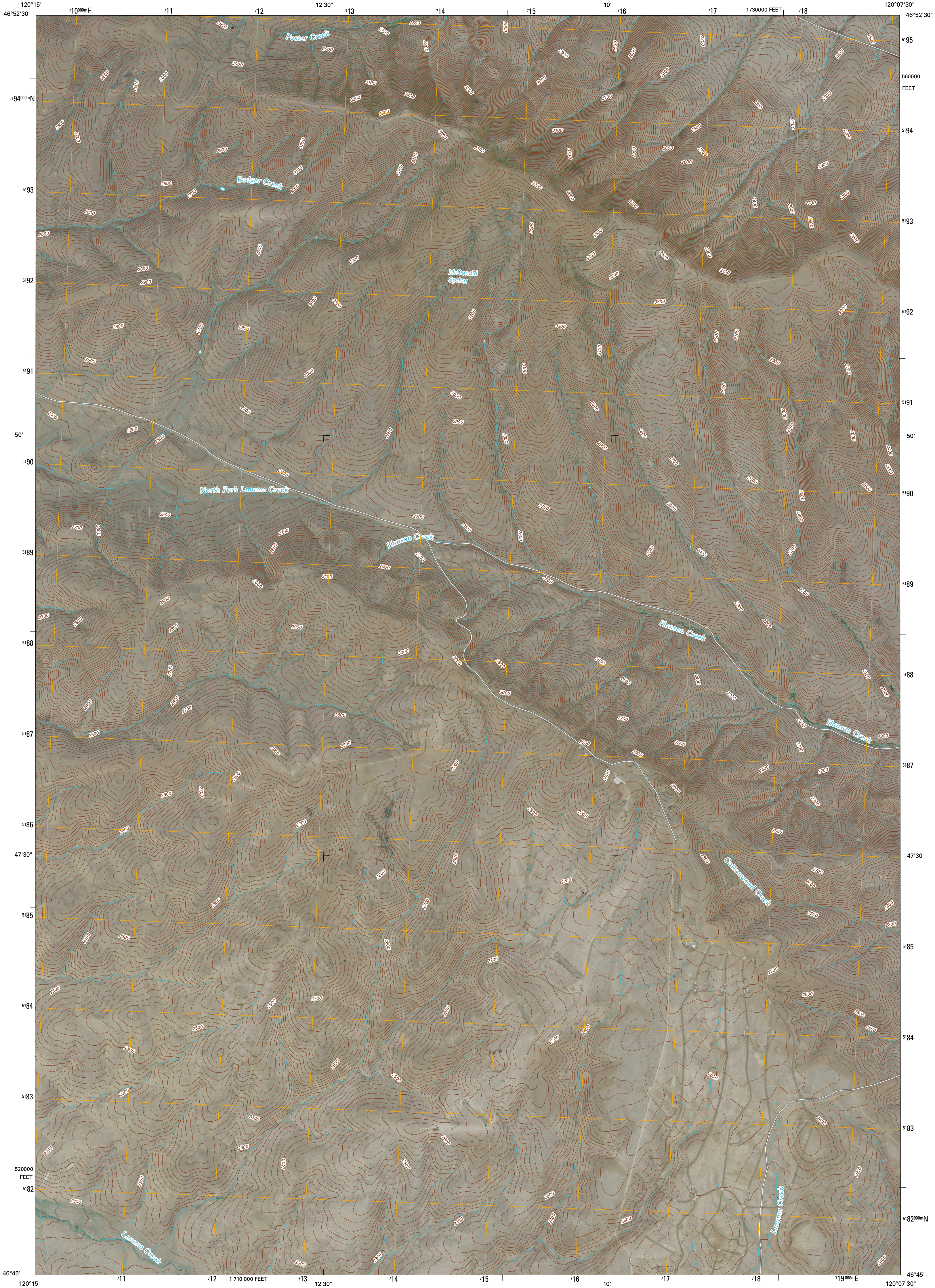




U.S. DEPARTMENT OF THE INTERIOR  
U. S. GEOLOGICAL SURVEY

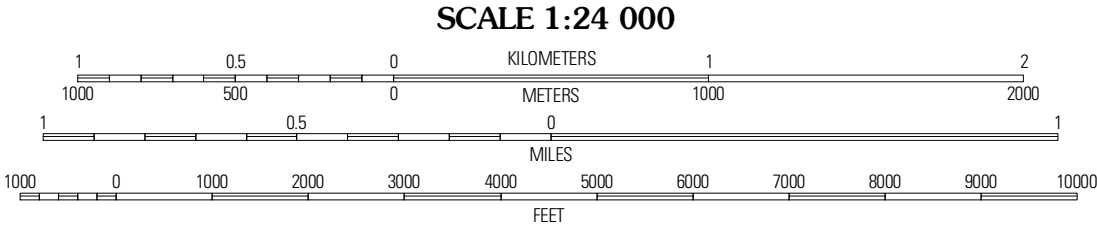
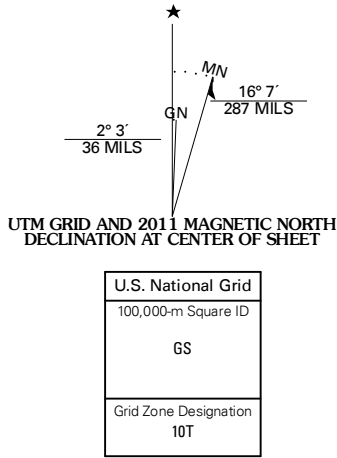


MCDONALD SPRING QUADRANGLE  
WASHINGTON  
7.5-MINUTE SERIES



Produced by the United States Geological Survey  
North American Datum of 1983 (NAD83)  
World Geodetic System of 1984 (WGS84). Projection and  
1 000-meter grid: Universal Transverse Mercator, Zone 10T  
10 000-foot ticks: Washington Coordinate System of 1983  
(south zone)

Imagery.....NAIP, July 2009  
Roads.....62006-2010 Tele Atlas  
Names.....GNIS, 2009  
Hydrography.....National Hydrography Dataset, 2009  
Contours.....National Elevation Dataset, 1999

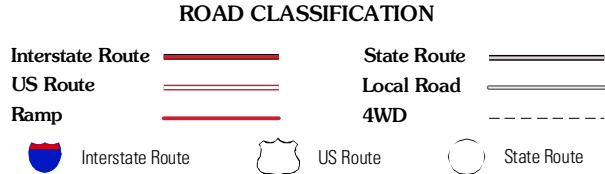


CONTOUR INTERVAL 20 FEET  
NORTH AMERICAN VERTICAL DATUM OF 1988  
This map was produced to conform with version 0.5.10 of the  
draft USGS Standards for 7.5-Minute Quadrangle Maps.  
A metadata file associated with this product is draft version 0.5.11



QUADRANGLE LOCATION		
East Kittitas	Boyleston	Ginkgo
Badger Gap	Mcdonald Spring	Doris
Selah Springs	Black Rock Spring NW	Black Rock Spring NE

ADJOINING 7.5' QUADRANGLES



MCDONALD SPRING, WA  
2011