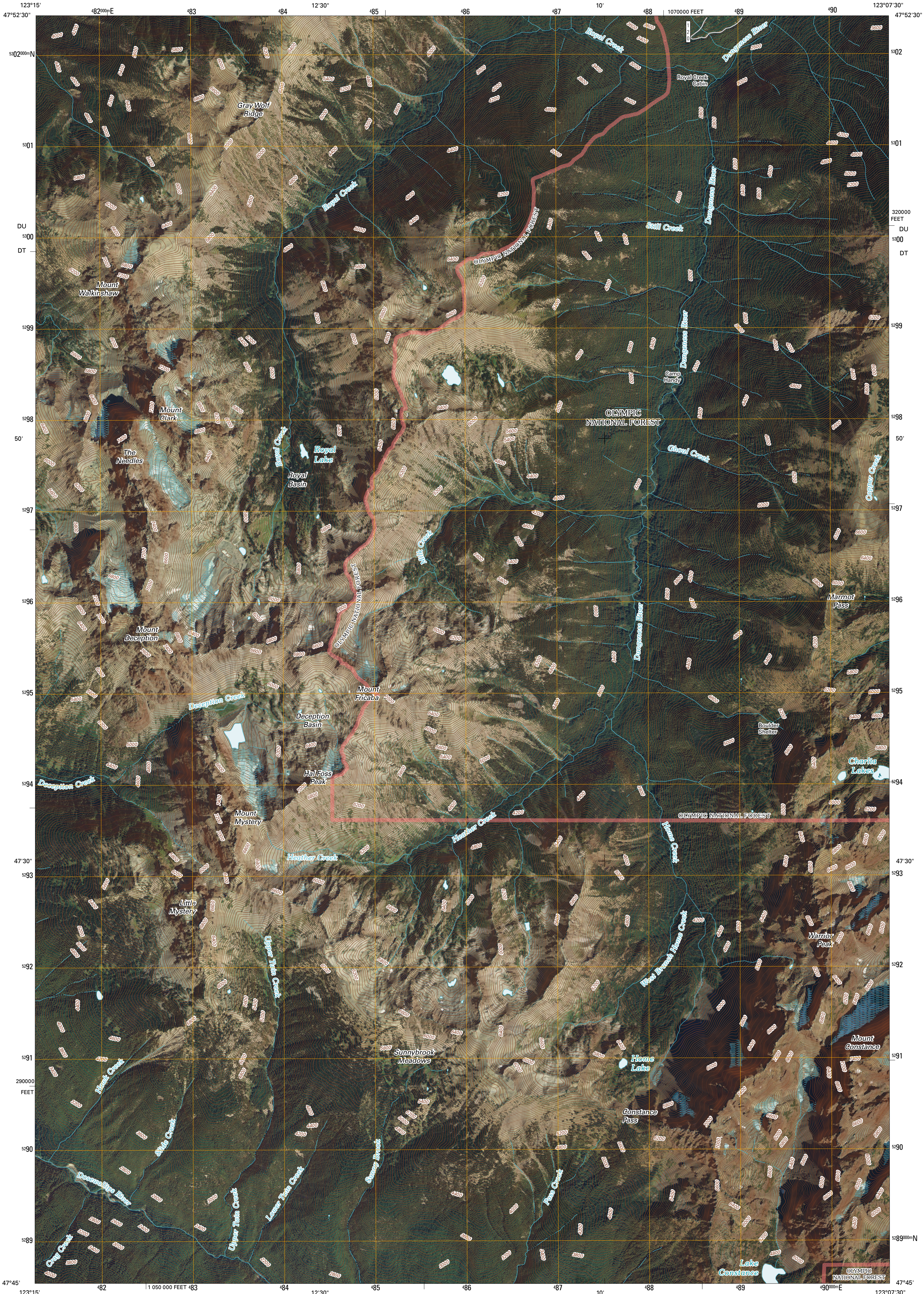




U.S. DEPARTMENT OF THE INTERIOR  
U. S. GEOLOGICAL SURVEY

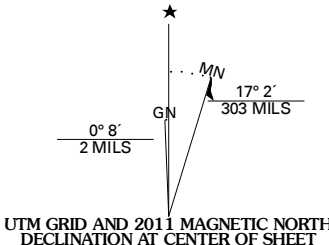


MOUNT DECEPTION QUADRANGLE  
WASHINGTON  
7.5-MINUTE SERIES

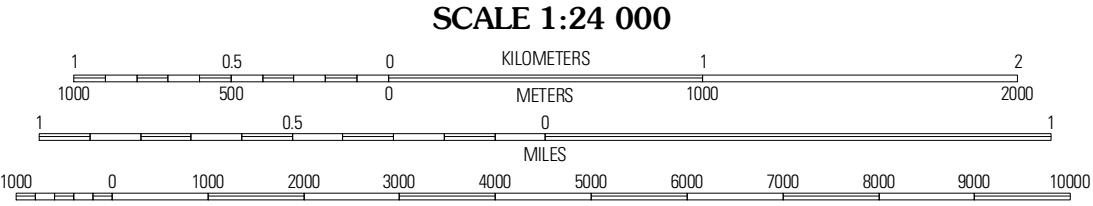


Produced by the United States Geological Survey  
North American Datum of 1983 (NAD83)  
World Geodetic System of 1984 (WGS84). Projection and  
1 000-meter grid: Universal Transverse Mercator, Zone 10T  
10 000-foot ticks: Washington Coordinate System of 1983  
(north zone)

Imagery.....NAIP, August 2009  
Roads.....2006-2010 Tele Atlas  
Roads within US Forest Service Lands.....FS Topo Data  
with limited Forest Service updates, 2009  
Names.....National Hydrography Dataset, 2009  
Hydrography.....National Hydrography Dataset, 2009  
Contours.....National Elevation Dataset, 1999



U.S. National Grid
DU = 100 000 Square Meters
DT = 100 000 Square Meters
Grid Zone Designation: 10T



CONTOUR INTERVAL 40 FEET  
NORTH AMERICAN VERTICAL DATUM OF 1988  
This map was produced to conform with version 0.5.10 of the  
draft USGS Standards for 7.5-Minute Quadrangle Maps.  
A metadata file associated with this product is draft version 0.5.13



QUADRANGLE LOCATION		
Madden Peak	Tyler Peak	Mount Zion
Wellesley Peak	Mount Deception	Mount Townsend
Mount Steel	The Brothers	Mount Jupiter

**ROAD CLASSIFICATION**

Interstate Route	State Route
US Route	Local Road
Ramp	4WD

Interstate Route (thick red line)  
US Route (red line)  
Ramp (red line with cross-ticks)  
State Route (thin red line)  
Local Road (thin black line)  
4WD (dashed black line)  
FS Primary Route (blue line with cross-ticks)  
FS Passenger Route (blue line)  
FS High Clearance Route (blue line with cross-ticks)

Check with local Forest Service unit  
for current travel conditions and restrictions.

MOUNT DECEPTION, WA  
2011