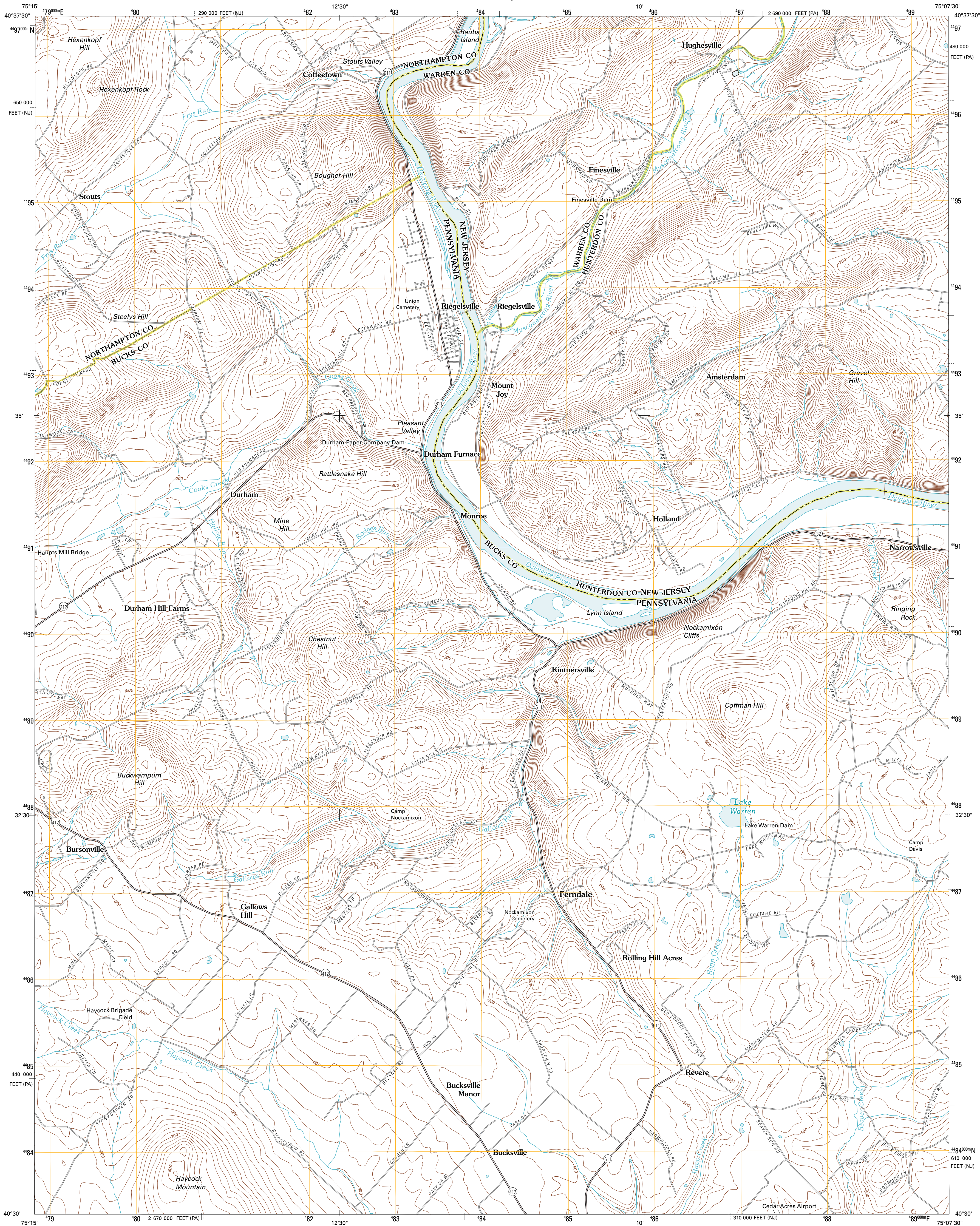




U.S. DEPARTMENT OF THE INTERIOR
U. S. GEOLOGICAL SURVEY

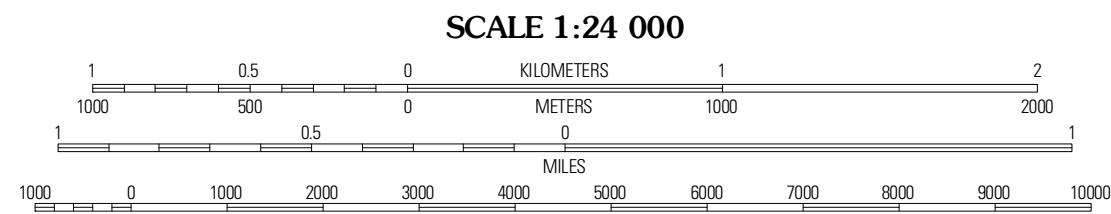
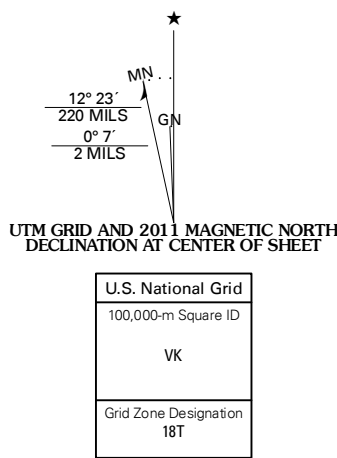


RIEGELSVILLE QUADRANGLE
PENNSYLVANIA-NEW JERSEY
7.5-MINUTE SERIES

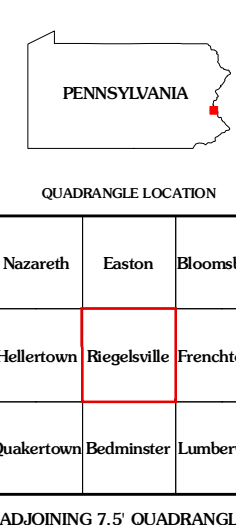


Produced by the United States Geological Survey
North American Datum of 1983 (NAD83)
World Geodetic System of 1984 (WGS84). Projection and
1 000-meter grid. Universal Transverse Mercator, Zone 18T
10 000-foot ticks: Pennsylvania Coordinate System of 1983
(south zone), New Jersey Coordinate System of 1983

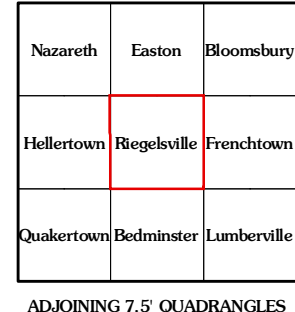
Imagery.....State of New Jersey, January 2007 - January 2008
Other imagery provided by DE, NY, PA
Roads.....E2006-2010 Tele Atlas
Names.....GNIS, 2010
Hydrography.....National Hydrography Dataset, 2007
Contours.....National Elevation Dataset, 2002
Boundaries.....Census, IBWC, IBC, USGS, 1972 - 2010



CONTOUR INTERVAL 20 FEET
NORTH AMERICAN VERTICAL DATUM OF 1988
This map was produced to conform with version 0.5.10
of the USGS US Topo Product Standard.
A metadata file associated with this product is draft version 0.5.15.NJ



ROAD CLASSIFICATION
Interstate Route
US Route
Ramp
State Route
Local Road
4WD



RIEGELSVILLE, PA-NJ
2011