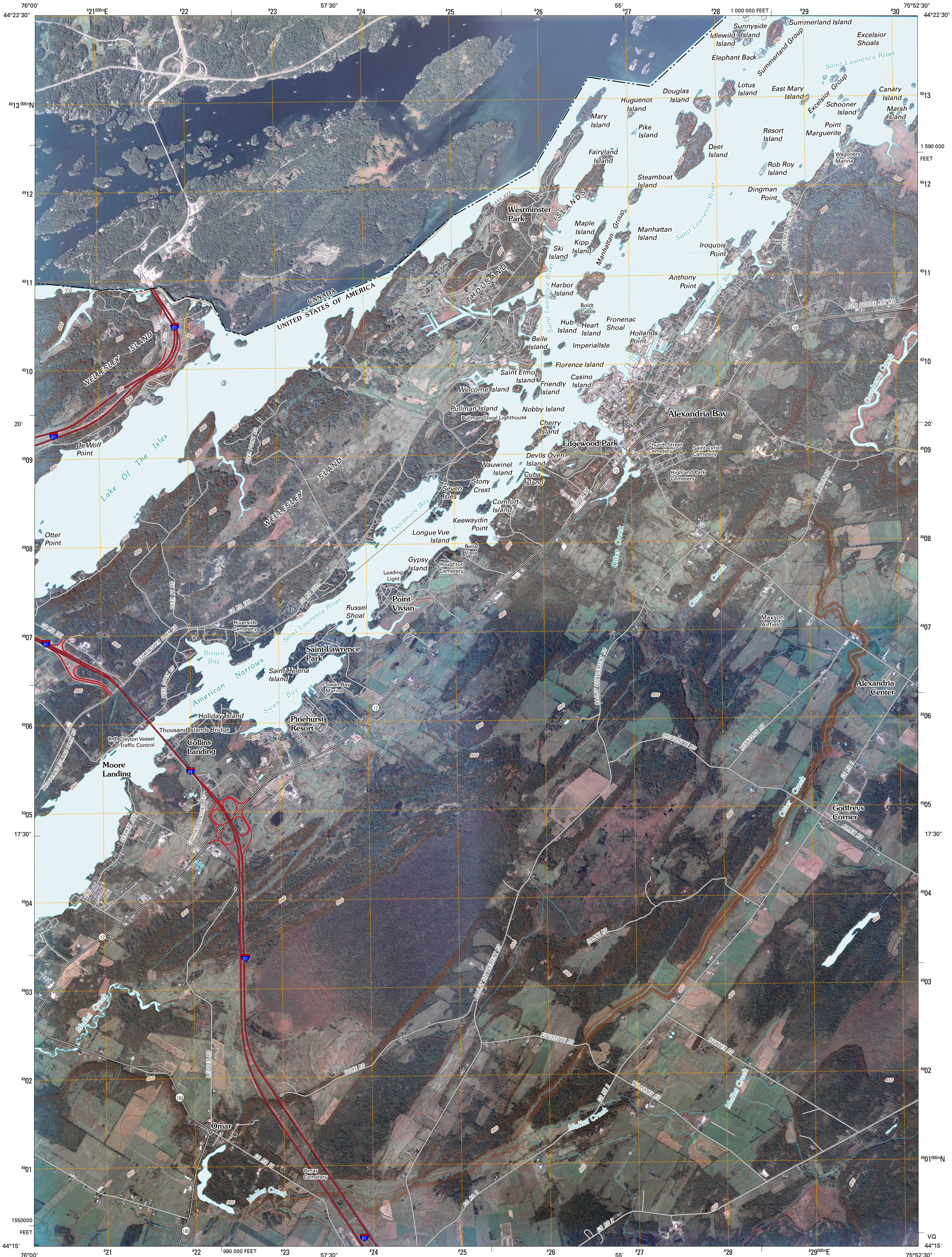




U.S. DEPARTMENT OF THE INTERIOR
U. S. GEOLOGICAL SURVEY

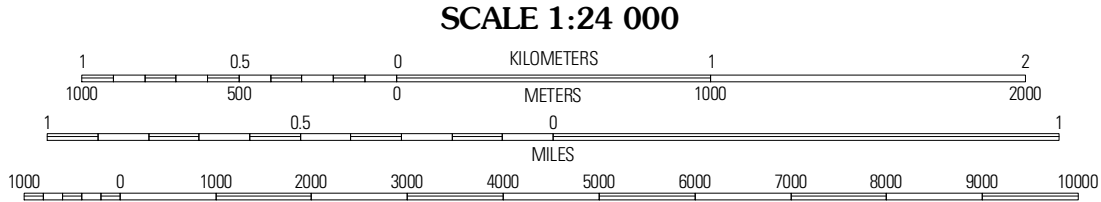
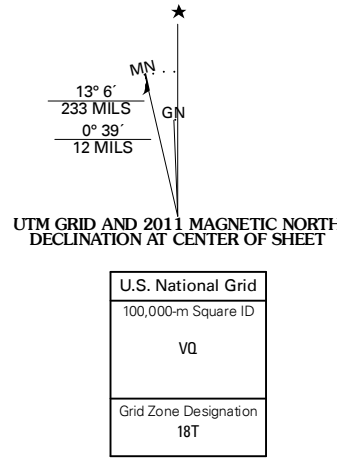


ALEXANDRIA BAY QUADRANGLE
NEW YORK-ONTARIO
7.5-MINUTE SERIES



Produced by the United States Geological Survey
North American Datum of 1983 (NAD83)
World Geodetic System of 1984 (WGS84). Projection and
1 000-meter grid: Universal Transverse Mercator, Zone 18T
10 000-foot ticks: New York Coordinate System of 1983
(central zone)

Imagery:.....NAIP, August 2009
Roads:.....US Census Bureau TIGER data
with limited USGS updates, 2006 - 2010
Names:.....GNIS, 2009
Hydrography:.....National Hydrography Dataset, 2009
Contours:.....National Elevation Dataset, 1999



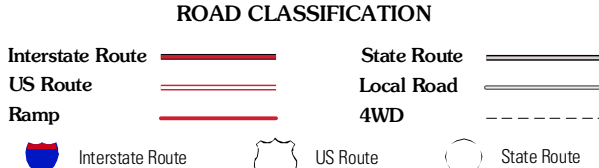
CONTOUR INTERVAL 10 FEET
NORTH AMERICAN VERTICAL DATUM OF 1988

This map was produced to conform with version 0.5.10 of the
draft USGS Standards for 7.5-Minute Quadrangle Maps.
A metadata file associated with this product is also draft version 0.5.10



QUADRANGLE LOCATION		
Thousand Island Park	Alexandria Bay	Chippewa Bay
Clayton	La Fargeville	Theresa

ADJOINING 7.5' QUADRANGLES



ALEXANDRIA BAY, NY-ON
2011