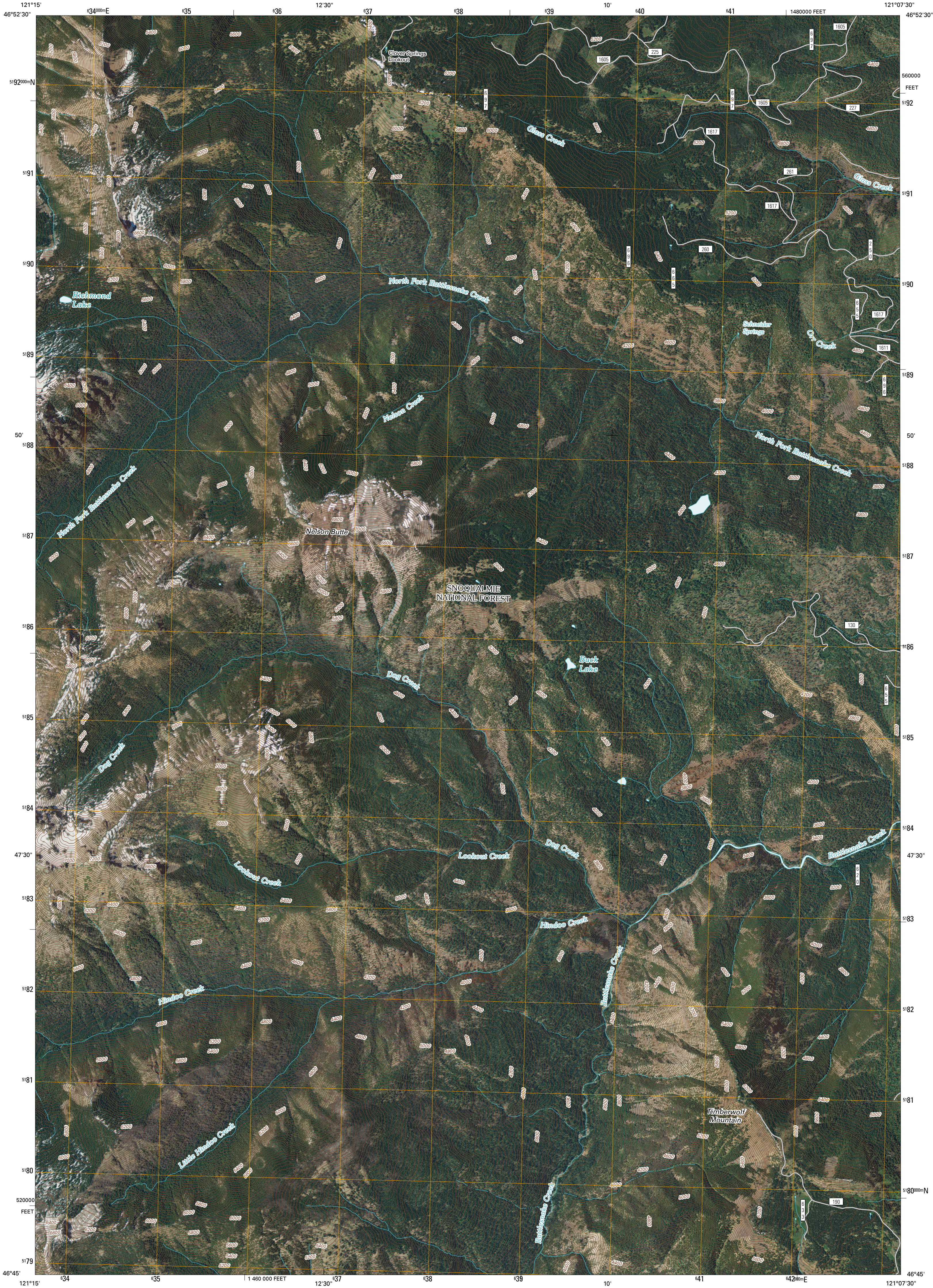




U.S. DEPARTMENT OF THE INTERIOR  
U. S. GEOLOGICAL SURVEY



TIMBERWOLF MOUNTAIN QUADRANGLE  
WASHINGTON  
7.5-MINUTE SERIES



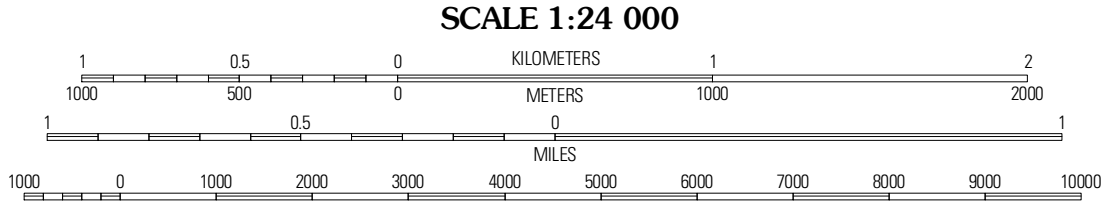
Produced by the United States Geological Survey  
North American Datum of 1983 (NAD83)  
World Geodetic System of 1984 (WGS84) Projection and  
1 000-meter grid: Universal Transverse Mercator, Zone 10T  
10 000-foot ticks: Washington Coordinate System of 1983  
(south zone)

Imagery.....NAP, July 2009  
Roads.....2006-2010 Tele Atlas  
Roads within US Forest Service Lands.....FS Topo Data  
with limited Forest Service updates, 2009  
Name.....National Hydrography Dataset, 2009  
Hydrography.....National Elevation Dataset, 1999  
Contours.....National Elevation Dataset, 1999

UTM GRID AND 2011 MAGNETIC NORTH  
DECLINATION AT CENTER OF SHEET

11°13' 23 MILS  
18°21' 28 MILS  
GN

U.S. National Grid
100,000m Square ID
FS
Grid Zone Designation
10T



CONTOUR INTERVAL 40 FEET  
NORTH AMERICAN VERTICAL DATUM OF 1988

This map was produced to conform with version 0.5.10 of the  
draft USGS Standards for 7.5-Minute Quadrangle Maps.  
A metadata file associated with this product is draft version 0.5.13



GOOSE PRATIE	OLD SCAB MOUNTAIN	CLIFFDELL
Bumping Lake	Timberwolf Mountain	Mucks Table
Spiral Butte	Rimrock Lake	Tison Basin

ADJOINING 7.5' QUADRANGLES

ROAD CLASSIFICATION

Interstate Route  
US Route  
Ramp

State Route  
Local Road  
4WD

Interstate Route  
US Route  
FS Primary Route

US Route  
FS Passenger Route

State Route  
FS High Clearance Route

Check with local Forest Service unit  
for current travel conditions and restrictions.

TIMBERWOLF MOUNTAIN, WA  
2011