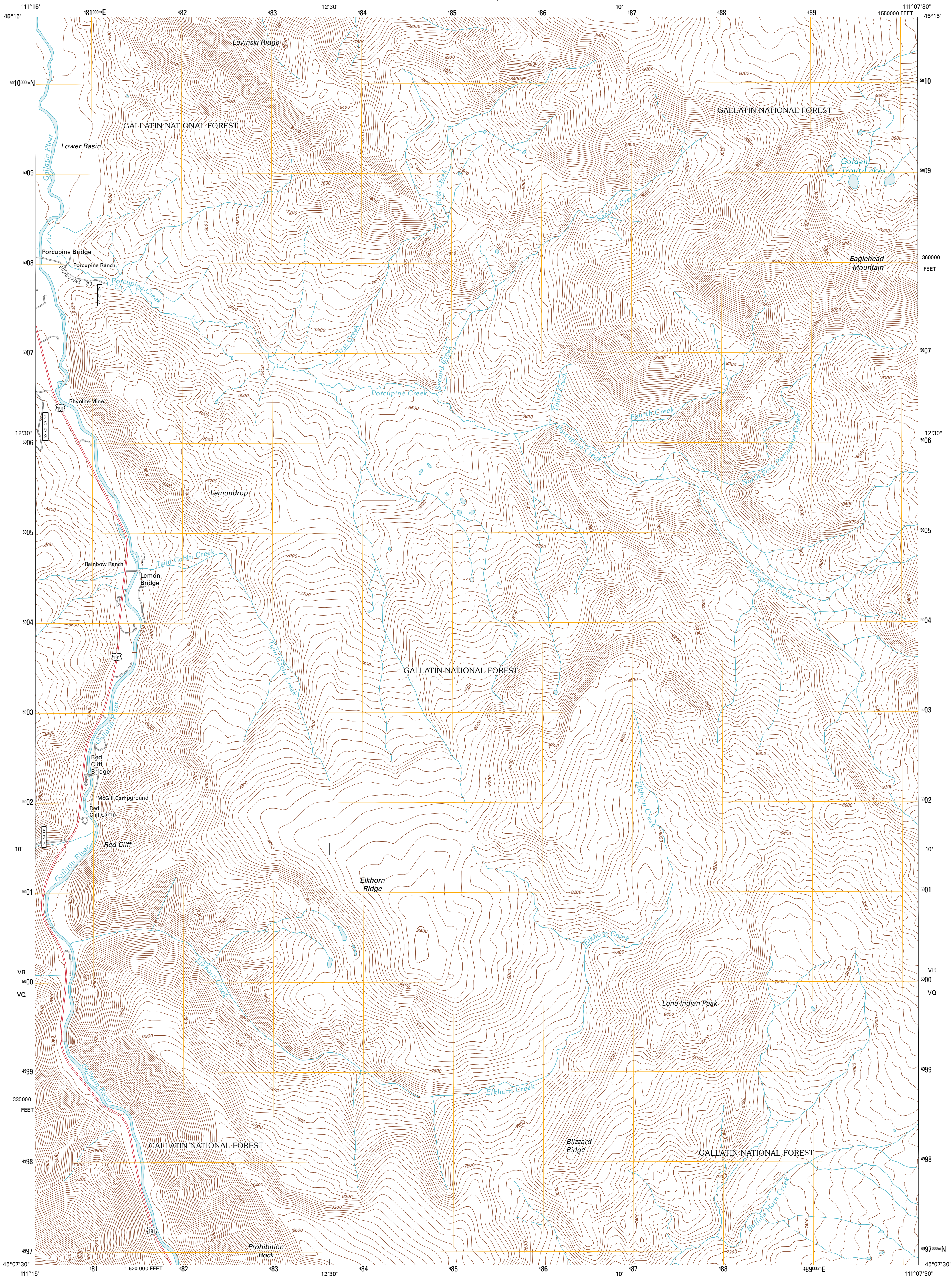




U.S. DEPARTMENT OF THE INTERIOR
U. S. GEOLOGICAL SURVEY

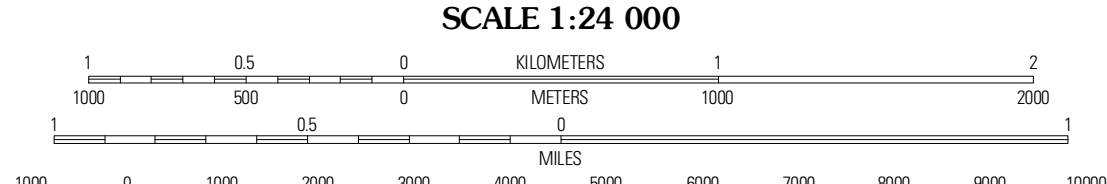
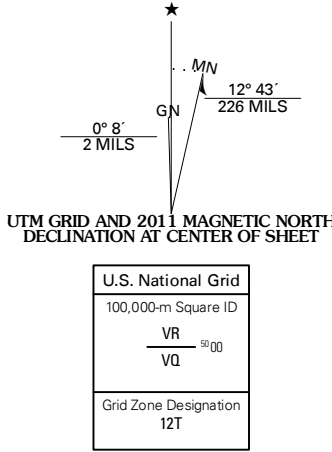


LONE INDIAN PEAK QUADRANGLE
MONTANA-GALLATIN CO.
7.5-MINUTE SERIES



Produced by the United States Geological Survey
North American Datum of 1983 (NAD83)
World Geodetic System of 1984 (WGS84). Projection and
1 000-meter grid Universal Transverse Mercator, Zone 12T
10 000-foot ticks: Montana Coordinate System of 1983

Imagery.....NAIP, June 2009
Roads.....©2006-2010 U.S. Topo Data
Roads within US Forest Service Lands.....FSTopo Data
with limited Forest Service updates, 2009
Names.....GNIS, 2010
Hydrography.....National Hydrography Dataset, 2009
Contours.....National Elevation Dataset, 2000
Boundaries.....Census, IBWC, IBC, USGS, 1972 - 2010



CONTOUR INTERVAL 40 FEET
NORTH AMERICAN VERTICAL DATUM OF 1988
This map was produced to conform with version 0.5.10
of the USGS US Topo Product Standard.
A metadata file associated with this product is draft version 0.5.16



QUADRANGLE LOCATION

Gallatin Peak	Hidden Lakes	The Sentinel
Quail Falls	Lone Indian Peak	Baraboo Peak
Lincoln Mountain	Sunshine Point	Big Horn Peak

ROAD CLASSIFICATION

Interstate Route	State Route
US Route	Local Road
Ramp	4WD

Legend for road types: Interstate Route (thick red line), US Route (thin red line), Ramp (red line with blue triangle), State Route (thin black line), Local Road (dashed black line), 4WD (dashed black line with cross-ticks), FS Primary Route (black line with cross-ticks), US Route (black line with cross-ticks), FS Passenger Route (black line with cross-ticks), FS High Clearance Route (black line with cross-ticks).

Check with local Forest Service unit for current travel conditions and restrictions.

LONE INDIAN PEAK, MT
2011